



PCM

£1,850 PCM

Daling Way

London, E3 5ND

HOT WATER AND HEATING INCLUDED.

Large 2 double bedroom apartment with separate office flat and with an open-plan kitchen that seamlessly flows into a spacious living area, with floor to ceiling windows leading onto the balcony that offers breath taking views of the cities skyline.

The area is also home to a mix of independent cafes, shops, and cultural sites, including the nearby Victoria Park and the iconic Olympic Park, making it an ideal location for both young professionals and families as well as Roman Road Market being close by.

Transport links include Mile End, Bow Road, Bow Church (DLR) and Mile End Stations which are all close by as well as a number of bus routes.

Part furnished

5 weeks deposit: 2134.61

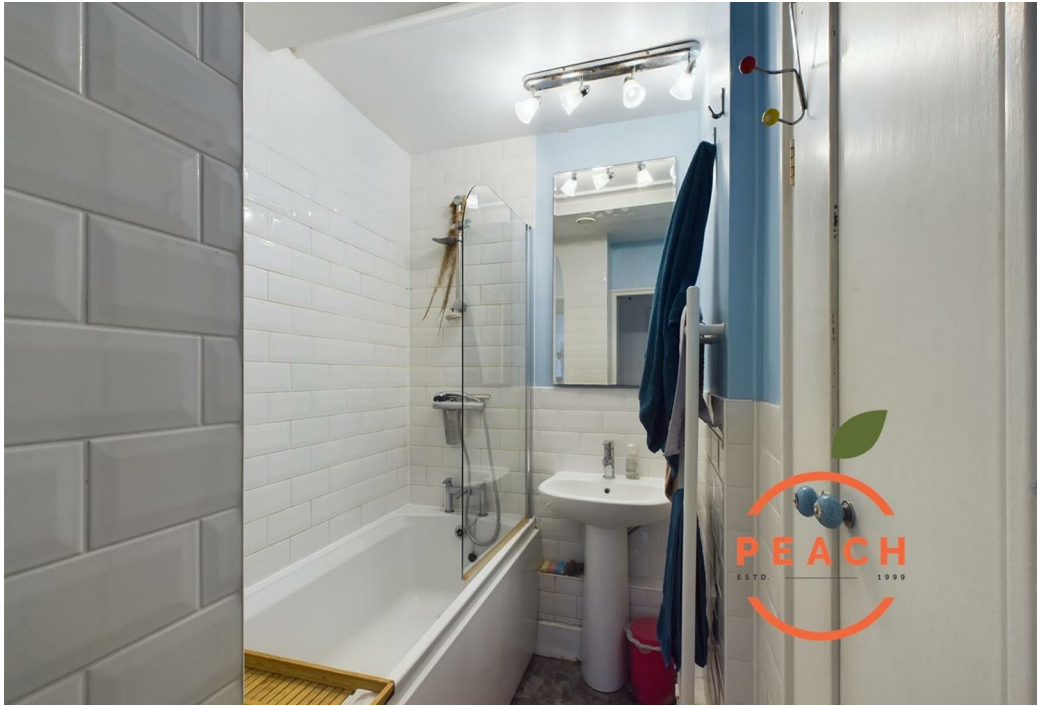
Council Tax: Band C

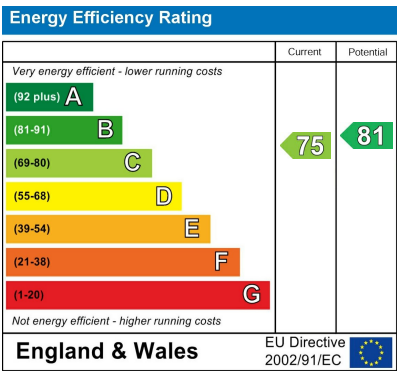
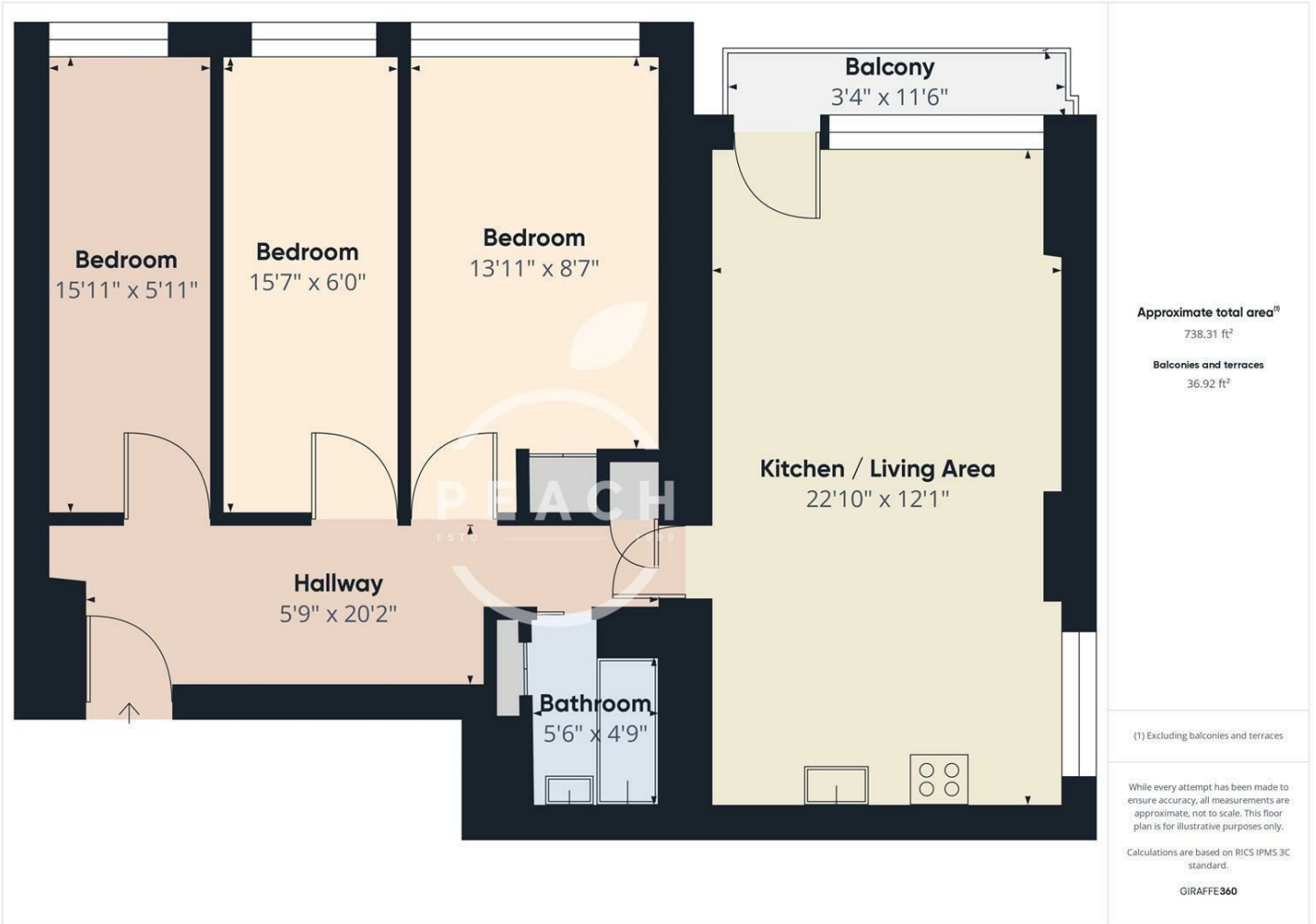
12 month contract@ break clause subject to offer

Available end of July

MAXIMUM 2 TENANTS PERMITTED







Agents Note: Whilst every care has been taken to prepare these particulars, they are for guidance purposes only. All measurements are approximate and are for general guidance purposes only and whilst every care has been taken to ensure their accuracy, they should not be relied upon and potential buyers/tenants are advised to recheck the measurements

<p>OFFICE ADDRESS 88 Cheshire Street London E2 6EH</p>	<p>OFFICE DETAILS 0207 739 6969 info@peachproperties.com www.peachproperties.com</p>
---	---