



FLAT 69, VERTEX TOWER 3 HARMONY PLACE LONDON, SE8 3FE

£2,480 PER MONTH

2 Bed, 2 Bath Apartment in Vertex Tower, Greenwich Creekside

Welcome to this immaculately presented and stylish 2-bedroom, 2-bathroom apartment located on the 12th floor of the exclusive Vertex Tower in Greenwich Creekside.

Offering approximately 817 sq ft of bright, modern living space, this home is finished to an exceptional standard throughout and comes furnished to a high specification.

Built in 2012 and *just refurbished*, the apartment features:

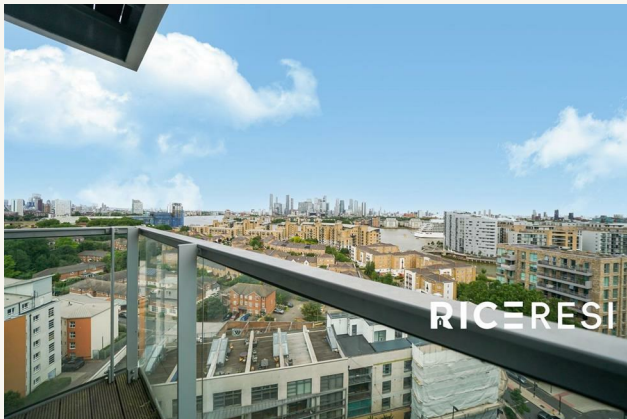
R
rice resi

FLAT 69, VERTEX TOWER 3

Reception Room/Kitchen

Second Bedroom

Master Bedroom



FLAT 69, VERTEX TOWER 3





RICERESI

FLAT 69, VERTEX TOWER 3

ADDITIONAL INFORMATION

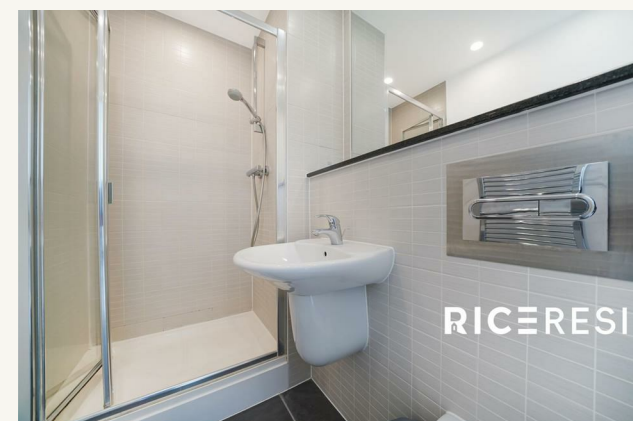
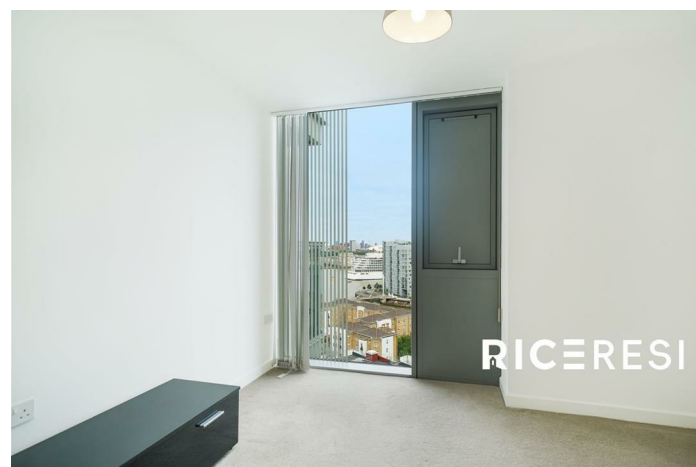
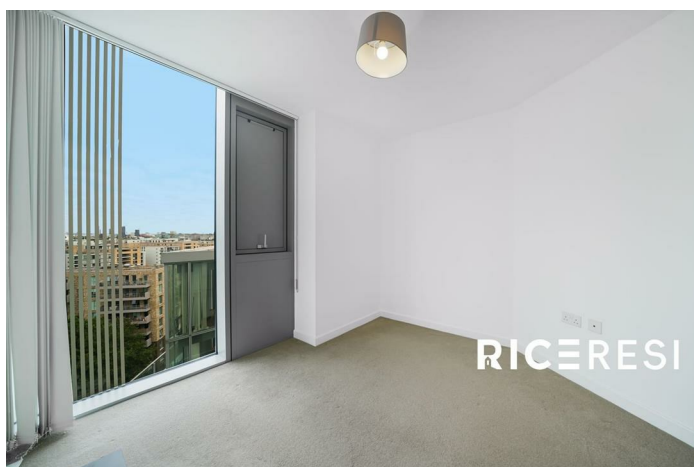
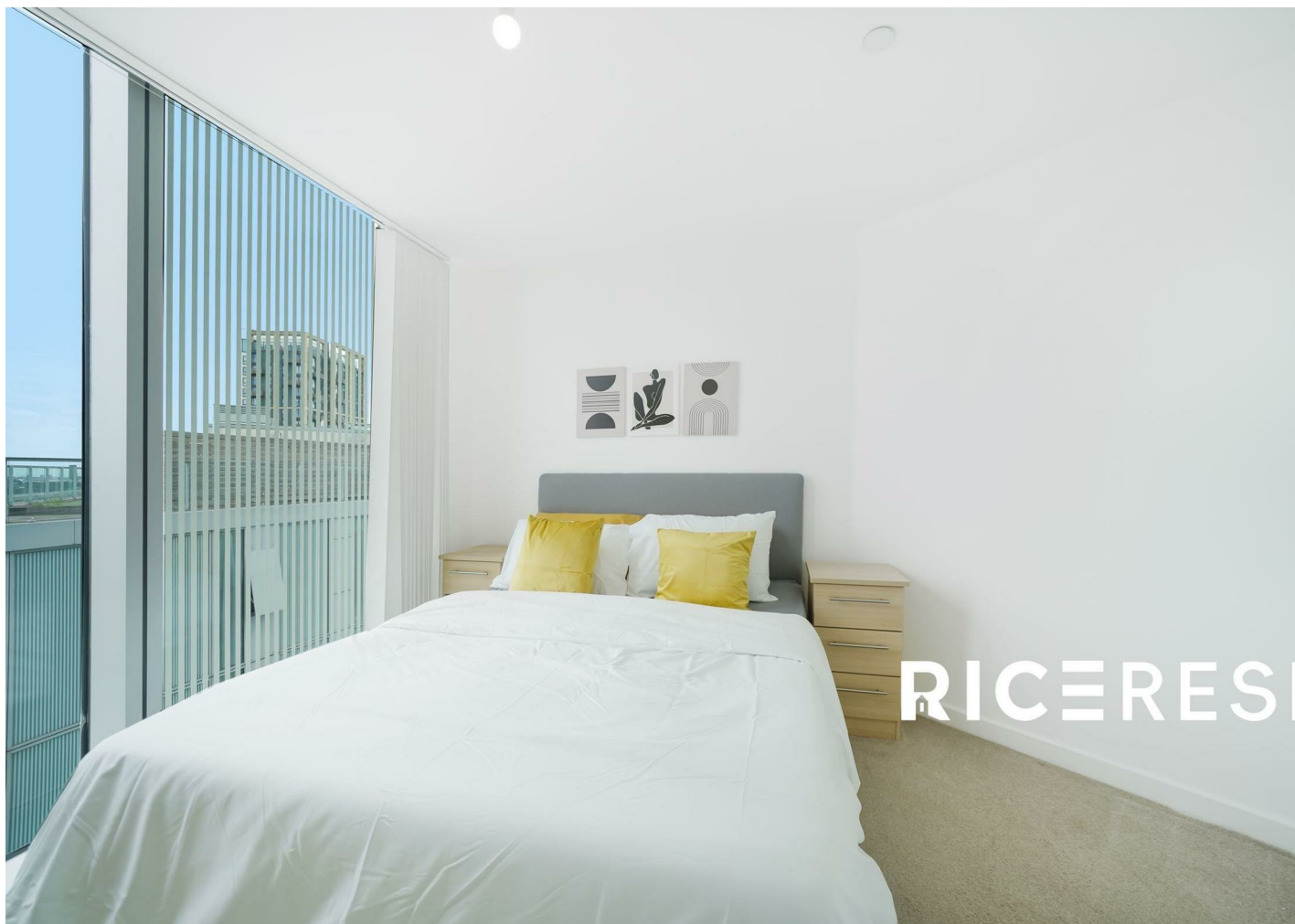
Local Authority –

Council Tax – Band

Viewings – By Appointment Only

Floor Area – 699.66 sq ft

Tenure –

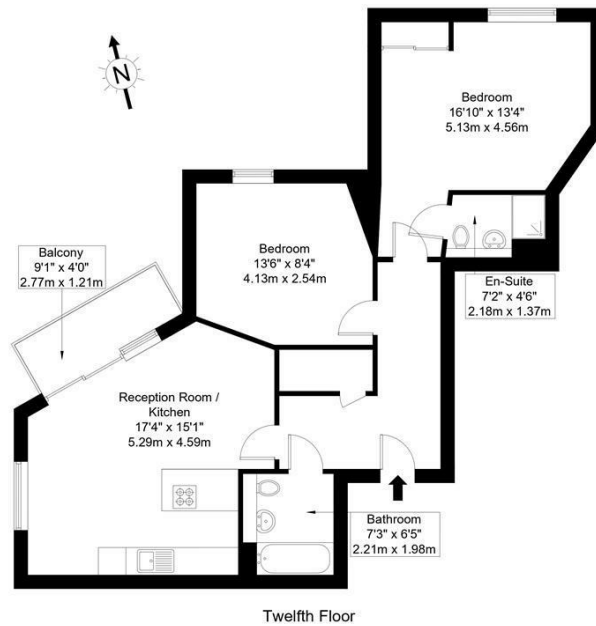


Harmony Place, SE8 3FE

Approx Gross Internal Area = 75.87 sq m / 817 sq ft

Balcony = 3.51 sq m / 38 sq ft

Total = 79.38 sq m / 855 sq ft

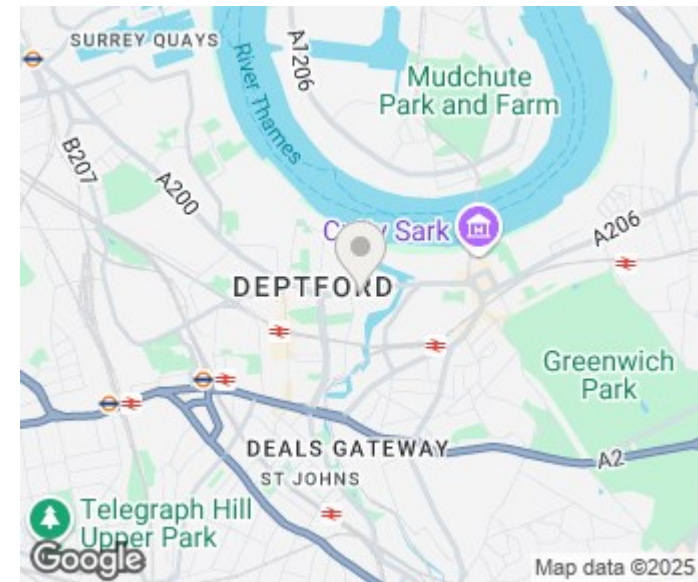


Ref :

Copyright

**BLEU
PLAN**

The Floor plan is not to scale and measurements and areas shown are approximate and therefore should be used for illustrative purposes only. The plan has been prepared in accordance with the RICS code of Measuring Practice and whilst we have confidence in the information produced it must not be relied on. Maximum lengths and widths are represented on the floor plan. If there is any aspect of particular importance, you should carry out or commission your own inspection of the property.
Copyright © BleuPlan



Energy Efficiency Rating		
	Current	Potential
Very energy efficient - lower running costs		
(92 plus) A		
(81-91) B	82	82
(69-80) C		
(55-68) D		
(39-54) E		
(21-38) F		
(1-20) G		
Not energy efficient - higher running costs		
England & Wales	EU Directive 2002/91/EC	

Agents Note: Whilst every care has been taken to prepare these particulars, they are for guidance purposes only. All measurements are approximate and are for general guidance purposes only and whilst every care has been taken to ensure their accuracy, they should not be relied upon and potential buyers/tenants are advised to recheck the measurements

RICE Resi
Unit 6 12 Pepper Street
London
E14 9RP

020 3006 6995
hello@riceresi.com
www.riceresi.com

R
rice resi