

HUNTERS®

HERE TO GET *you* THERE



Green Walk

London, SE1 4TX

£3,100 Per Calendar Month

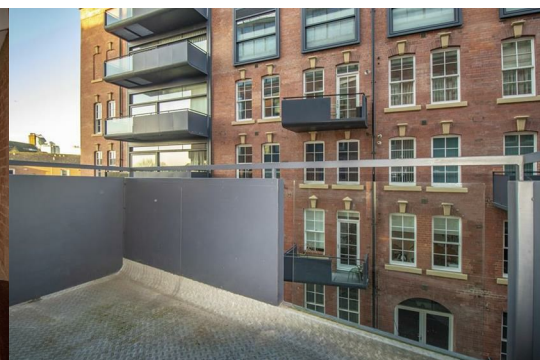
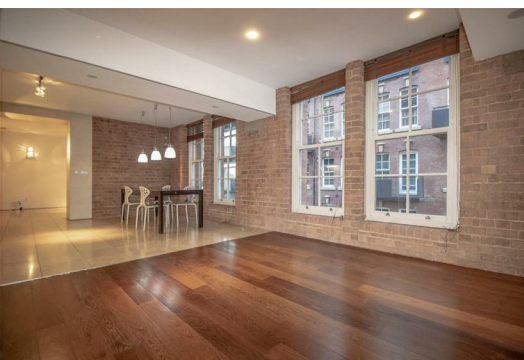


Situated in the highly sought-after Hartley Jam Factory development, this impressive two-bedroom apartment spans approximately 1,000 sq ft and offers an exceptional blend of character and modern living.

The property features a generous reception room, a separate kitchen with space for dining, two well-proportioned bedrooms (the principal with fitted wardrobes), two bathrooms, and a private terrace.

Further highlights include exposed brickwork, high ceilings, marble flooring in the lounge, wooden flooring in the bedrooms, and an abundance of natural light throughout. Residents also benefit from access to landscaped communal gardens and a 24-hour concierge service.

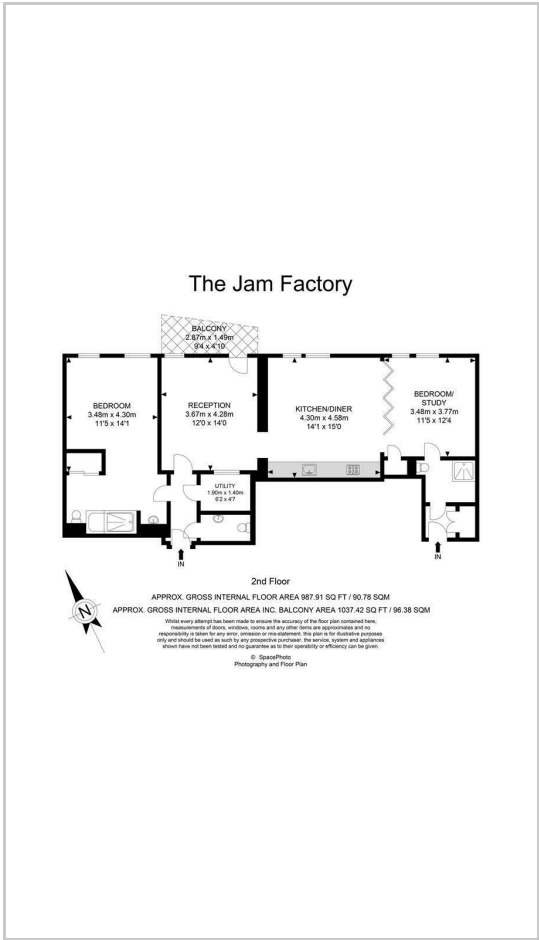
The Jam Factory is one of SE1's most iconic developments, ideally positioned within walking distance of Borough and Bermondsey Street, both renowned for their vibrant mix of bars, restaurants, and boutique shops. Excellent transport connections are also close at hand.



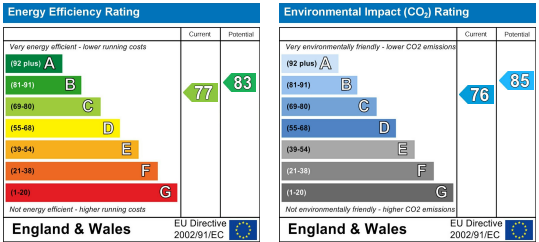
Area Map



Floor Plans



Energy Efficiency Graph



These particulars are intended to give a fair and reliable description of the property but no responsibility for any inaccuracy or error can be accepted and do not constitute an offer or contract. We have not tested any services or appliances (including central heating if fitted) referred to in these particulars and the purchasers are advised to satisfy themselves as to the working order and condition. If a property is unoccupied at any time there may be reconnection charges for any switched off/disconnected or drained services or appliances - All measurements are approximate. **THINKING OF SELLING?** If you are thinking of selling your home or just curious to discover the value of your property, Hunters would be pleased to provide free, no obligation sales and marketing advice. Even if your home is outside the area covered by our local offices we can arrange a Market Appraisal through our national network of Hunters estate agents.