



# Doran Drive, Redhill

£1,800 Per Month







“

Modern, light, and spacious two-bedroom flat in the sought-after Doran Drive Development. Featuring open-plan living, bay windows, built-in storage, two bathrooms, and access to communal gardens—perfect for relaxing or entertaining family and friends.

”



Modern, light & spacious.

Ralph James are pleased to present to the lettings market, this beautiful two-bedroom flat located in the ever-popular Doran Drive Development. Well looked after by its current owners, its neutral finish opens up this already well size home and the open plan layout is a dream for socialising with family and friends.

The large hallway is bright and welcoming, with storage already built in there is still room to add in a pretty console table where you can throw your keys and keep your post. From here you are let through to the impressively sized open plan living/dining area, a huge room with a bay window bringing in light throughout the year, you can comfortably fit in a large dining table and a couple of sofas whilst still having room to add in some additional fixtures.

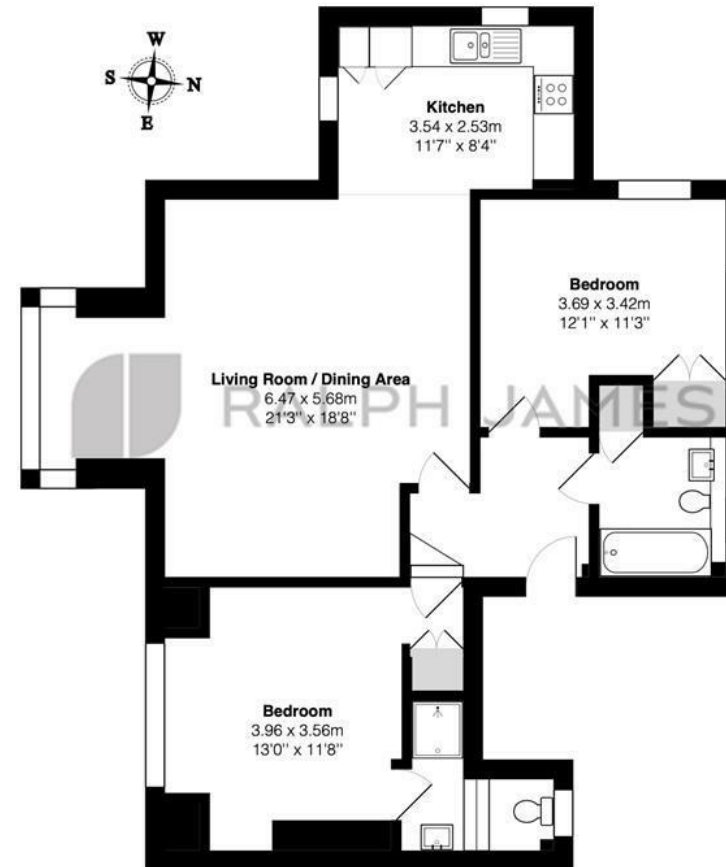
Outside the communal gardens, are a lovely spot to relax with a good book or you can lay a picnic blanket down and lay back whilst soaking up the sun.

The two double bedrooms are both well-sized and come with built-in cupboard space, the master bedroom has a bay window making the most of the natural light. There is also an en-suite with a walk-in shower, you also have the family bathroom that includes a large tub for relaxing in.



## Need to know

- Popular development
- Cracking location
- Parking
- Light and spacious
- Floor to ceiling windows
- Good sized double bedrooms
- Two bathrooms
- Modern kitchen
- EPC: B
- Council tax: D



### Second Floor Flat

West Court, Doran Drive, Reigate

Total Area: 81.3 m<sup>2</sup> ... 875 ft<sup>2</sup>

FOR ILLUSTRATIVE PURPOSES ONLY.

Whilst every attempt has been made to ensure the accuracy of the floor plan shown, all measurements, positioning, fixtures, features, fittings and any other data shown are an approximate interpretation for illustrative purposes only and are not to scale.

No responsibility is taken for any error, omission, miss-statement or use of data shown.

The above statement applies to both 'Still Moving London LTD' and the Company or individual displaying this floor plan.

Unauthorised reproduction prohibited.

© Still Moving London LTD (www.stillmoving.london)

 RALPH JAMES

## Interested?

redhill@ralphjames.co.uk  
01737 765 555

1

ralphjames.co.uk