



Great Smith Street, SW1P | £2,500 Per Month



TUCKERMAN
ESTATE AGENTS
PROPERTY PROFESSIONALS

Great Smith Street, Westminster

This bright and spacious one bedroom apartment is a short distance from the Houses of Parliament, Westminster Abbey and Westminster Underground Station.

Briefly comprising a well proportioned reception room, separate kitchen with space for a dining table, roomy bedroom and a recently redecorated bathroom.

This property is ideal for individuals or couples seeking a stylish urban living experience. With its prime location, residents will enjoy easy access to a wealth of local amenities, including shops, restaurants, and cultural attractions.

LOCATION

Westminster Mansions is split into two separate buildings and this apartment is located on the corner of Great Smith Street and Great Peter Street. It is comfortably within the Division Bell area of the Houses of Parliament, moments from Smiths Square and within walking distance of Westminster and St James' underground stations. The shops and amenities of Victoria, including the flagship House of Fraser department store and the Cardinal Place Shopping Centre are also close by.





Great Smith Street, Westminster

Let

Per Month: £2,500 Per Month

Furnishing: Unfurnished

Available From: 22nd June 2025

Local Authority: Westminster City Council

Council Tax Band: E

Approximate Gross Internal Area:
520.00 sq ft

Energy Efficiency Rating

	Current	Potential
Very energy efficient - lower running costs		
(92 plus) A		
(81-91) B		
(69-80) C	70	78
(55-68) D		
(39-54) E		
(21-38) F		
(1-20) G		
Not energy efficient - higher running costs		

England & Wales

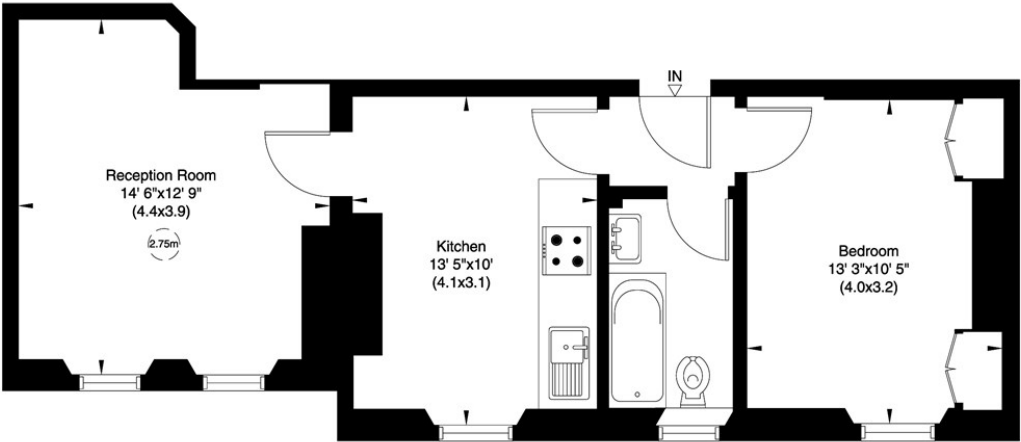
EU Directive
2002/91/EC

Westminster Mansions, SW1

Gross internal area (approx.)
48 Sq m (520 Sq ft)

For identification only, Not to Scale

Floor Plan by **capital group** 020 8671 7722



Second Floor

Not to scale, for guidance only and must not be relied upon as a statement of fact. All measurements and areas are approximate only (and have been prepared in accordance with the current edition of the RICS Code of Measuring Practice).

020 7222 5510
info@tuckermanresidential.co.uk
52 Moreton Street, London, SW1V 2PB
www.tuckermanresidential.co.uk

Agents Note: Whilst every care has been taken to prepare these sales particulars, they are for guidance purposes only. All measurements are approximate are for general guidance purposes only and whilst every care has been taken to ensure their accuracy, they should not be relied upon and potential buyers are advised to recheck the measurements

TUCKERMAN
ESTATE AGENTS
PROPERTY PROFESSIONALS