



Oakfield Drive, Reigate

£1,500 Per Month





“

Nestled in a quiet development, there is well kept communal gardens on your doorstep with a dedicated garage and external storage.

”

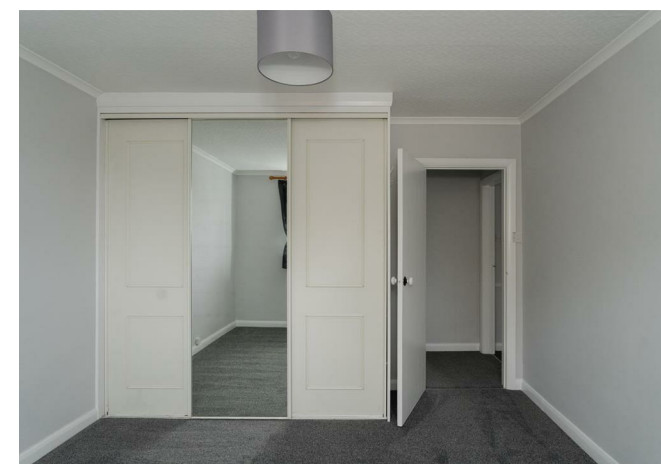


Ralph James is pleased to present this stylishly refurbished two-bedroom flat to the Reigate lettings market, ideally located just off Reigate Hill. Fully redecorated and ready for a new tenant to make it their home, this flat offers a fresh and inviting atmosphere.

The property features two generously sized double bedrooms, one with convenient built-in storage, and a spacious, light-filled living area. The separate kitchen is well-equipped with a hob, oven, fridge freezer, and washing machine, all complemented by large, bright double-glazed windows that enhance the flat's airy feel. Off the main hallway, you'll find a modern family bathroom offering a sleek, contemporary design.

Set within a peaceful, well-maintained development, the flat benefits from beautiful communal gardens right on your doorstep, perfect for a quiet retreat. A dedicated garage and additional external storage provide ample space for convenience, making this home ideal for anyone seeking comfort, style, and functionality in a prime Reigate location.

With everything in place and updated, this property is ready to welcome its new tenant.



Need to know

- Stylishly refurbished and fully redecorated two-bedroom flat in Reigate, ready for a new tenant
- Ideally located just off Reigate Hill in a peaceful, well-maintained development
- Two spacious double bedrooms, including one with built-in storage
- Bright, airy living area with large double-glazed windows
- Separate kitchen featuring a hob, oven, fridge freezer, and washing machine
- Garage included
- Beautiful communal gardens at the doorstep, offering a serene outdoor retreat
- Dedicated garage and external storage for added convenience
- EPC: D
- Council Tax: C



Second Floor

Rowan House, Oakfield Drive, Reigate

Total Area: 61.3 m² ... 659 ft²

FOR ILLUSTRATIVE PURPOSES ONLY.

Whilst every attempt has been made to ensure the accuracy of the floor plan shown, all measurements, positioning, fixtures, features, fittings and any other data shown are an approximate interpretation for illustrative purposes only and are not to scale.

No responsibility is taken for any error, omission, miss-statement or use of data shown.

The above statement applies to both 'Still Moving London LTD' and the Company or individual displaying this floor plan.

Unauthorised reproduction prohibited.

Â© Still Moving London LTD (www.stillmoving.london)

Interested?

reigate@ralphjames.co.uk
01737 333677

1

ralphjames.co.uk

