



**BENJAMIN  
STEVENS.**  
estate agents



## **Comet Close, Watford WD25 7AW**

**£3,100 PCM**

Benjamin Stevens are delighted to present this Four Bedroom semi-detached house.

The property has recently been renovated throughout and is decorated to a high standard. It boasts of four double bedrooms (two en-suite), a bathroom, a fully fitted open plan modern kitchen/dining/reception room, an office/reception room and a downstairs toilet.

There is a good sized garden to the rear of the property with a patio and AstroTurf and a large driveway at the front of the property.

To arrange a viewing, please call 020 3271 0111



# Comet Close, Watford WD25 7AW

Exterior



Kitchen

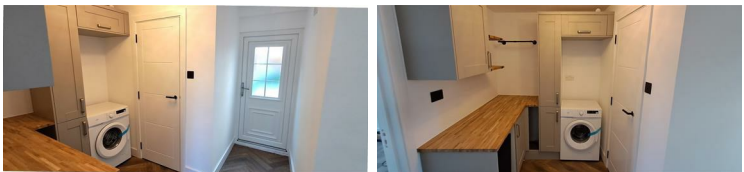


Dining/Reception Room



Downstairs WC

Utility Room



Reception Room



Bedroom One



Bedroom Two



Bedroom Three



Bedroom Four



En-Suite

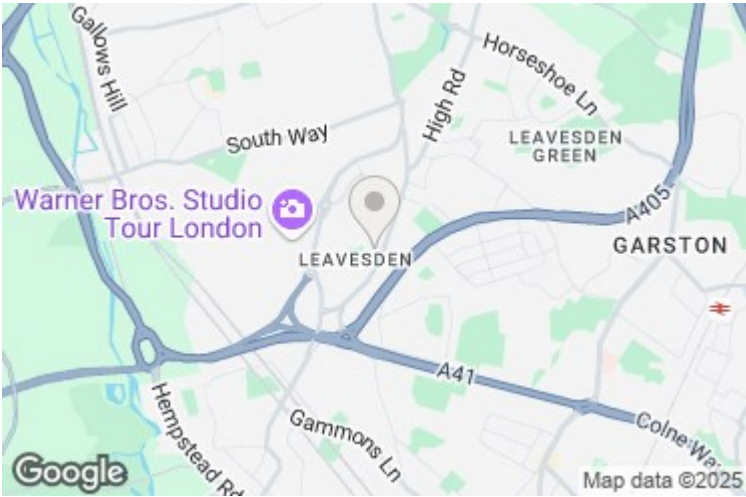


Comet Close, Watford WD25 7AW

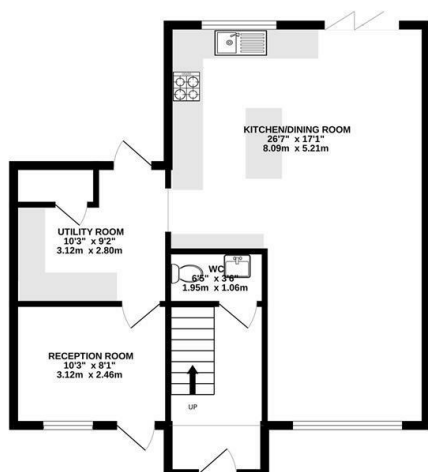
Shower Room



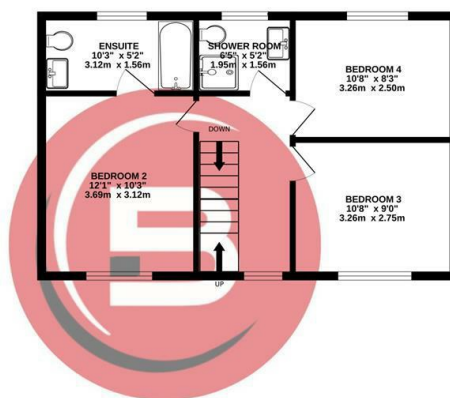
Garden



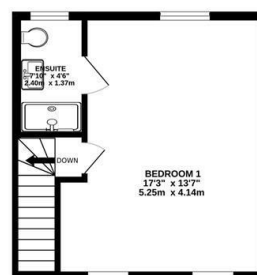
GROUND FLOOR  
651 sq.ft. (60.4 sq.m.) approx.



1ST FLOOR  
471 sq.ft. (43.7 sq.m.) approx.



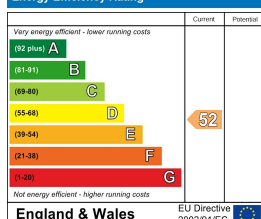
2ND FLOOR  
281 sq.ft. (26.1 sq.m.) approx.



TOTAL FLOOR AREA : 1402 sq.ft. (130.3 sq.m.) approx.

Whilst every attempt has been made to ensure the accuracy of the floorplan contained here, measurements of doors, windows, rooms and any other items are approximate and no responsibility is taken for any error, omission or mis-statement. This plan is for illustrative purposes only and should be used as such by any prospective purchaser. The services, systems and appliances shown have not been tested and no guarantee as to their operability or efficiency can be given.  
Made with Metropix ©2025

#### Energy Efficiency Rating



#### Environmental Impact (CO<sub>2</sub>) Rating

