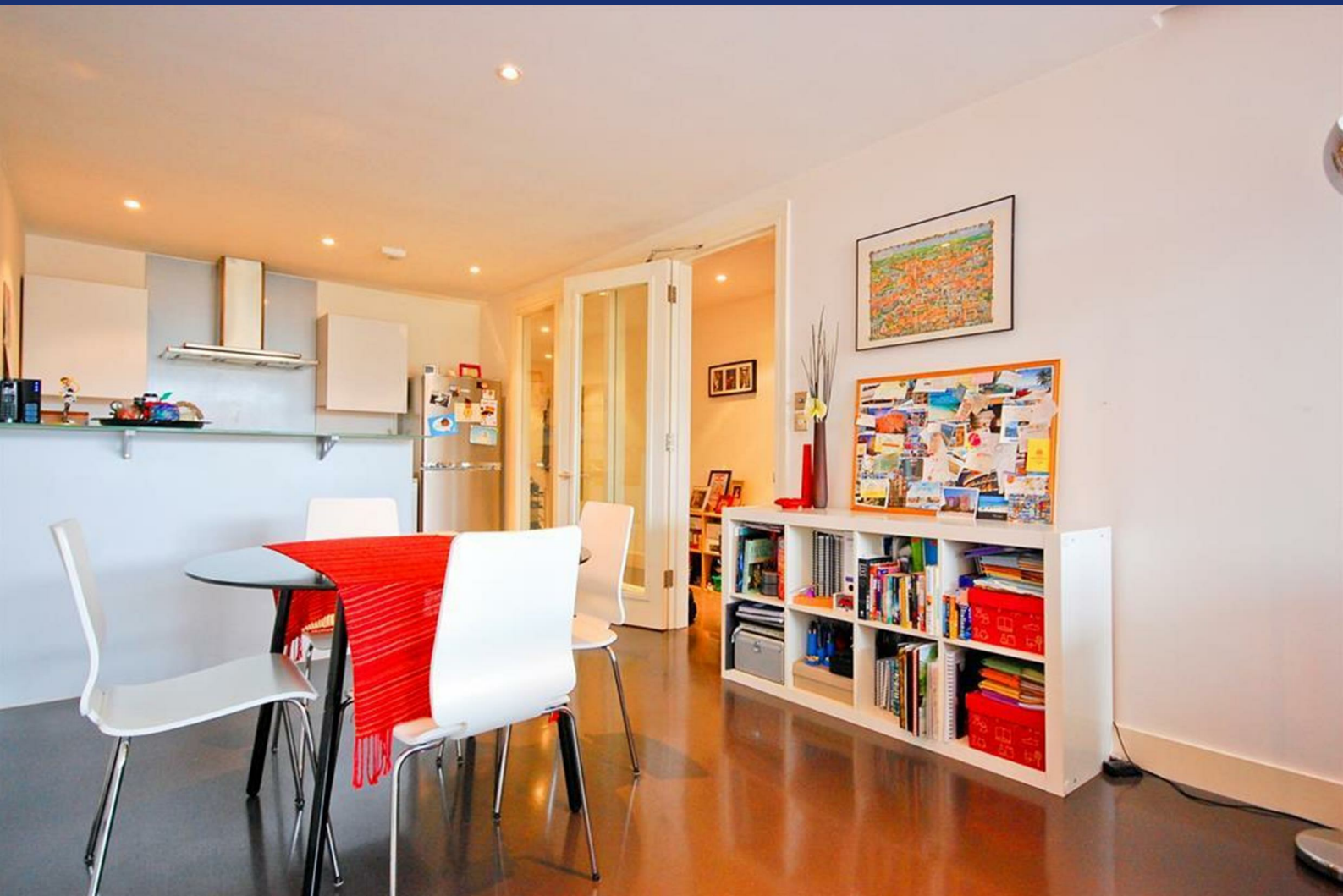


# HUNTERS®

HERE TO GET *you* THERE



## Drysdale Street

London, N1 6ND

£2,500 Per Calendar Month



An exceptional apartment only seconds from Hoxton Square and situated within a modern gated development. The apartment is extremely spacious and comprises of a large double bedroom, contemporary living space with floor to ceiling windows allowing ample amounts of natural light, modern fully integrated kitchen with Island, and a contemporary modern bathroom. The apartment is available furnished or unfurnished.

Located just moments away from the local amenities, trendy bars and restaurants of Shoreditch, Hoxton which are literally on your doorstep. Islington and the West End are also close by. Transport links to the City and the West End are within easy reach, with the nearest underground stations being Old Street (Northern Line) 3 minutes away, Shoreditch High Street (East London Line) 3 minutes away, and Liverpool Street (Central Line) station only 12 minutes



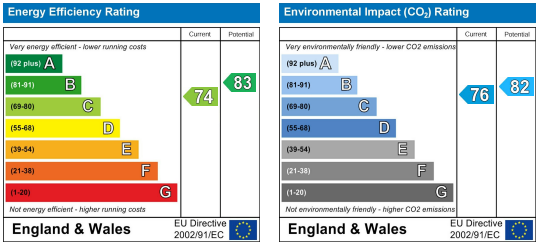
Area Map



Floor Plans



Energy Efficiency Graph



These particulars are intended to give a fair and reliable description of the property but no responsibility for any inaccuracy or error can be accepted and do not constitute an offer or contract. We have not tested any services or appliances (including central heating if fitted) referred to in these particulars and the purchasers are advised to satisfy themselves as to the working order and condition. If a property is unoccupied at any time there may be reconnection charges for any switched off/disconnected or drained services or appliances - All measurements are approximate.

**THINKING OF SELLING?** If you are thinking of selling your home or just curious to discover the value of your property, Hunters would be pleased to provide free, no obligation sales and marketing advice. Even if your home is outside the area covered by our local offices we can arrange a Market Appraisal through our national network of Hunters estate agents.