



166 Manor Park Road  
Harlesden  
London  
NW10 4JT  
T 020 8965 2250  
E sales@churchillmathesons.com  
www.churchillmathesons.com

**Churchill & Mathesons**

GFF 14a Ambleside Road, London, NW10 3UJ

£426 Per Week



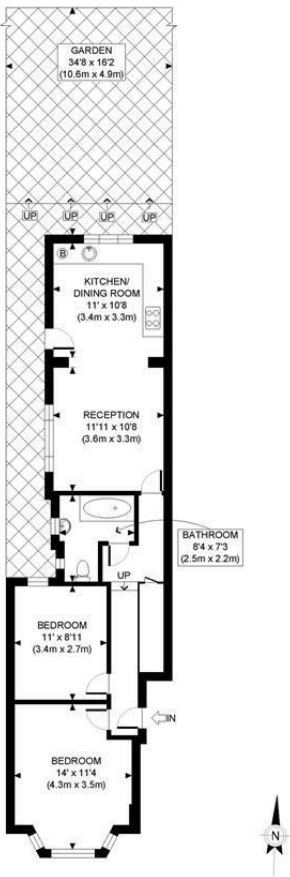
**KEY FEATURES:**

- 2 Bedroom garden flat
- Spacious open plan kitchen/reception
- Modern fully tiled bathroom
- FURNISHED~ AVAILABLE 18 JULY

**GROUND FLOOR 2 BEDROOM GARDEN FLAT**

- \* Two double bedrooms
  - \* Spacious open plan kitchen/reception
  - \* Modern fully tiled bathroom
  - \* Rear garden
  - \* Located on this quiet residential road, close to local amenities and transport links
- FURNISHED~ AVAILABLE 18 JULY

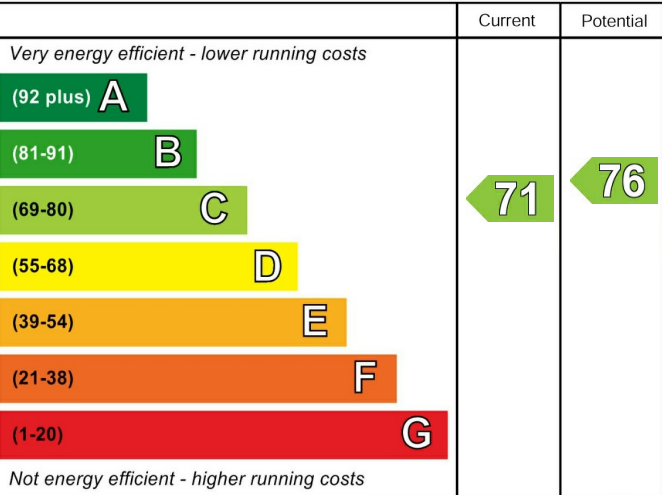




PROPERTY PHOTO PLANS.CO.UK  
ONE STOP SHOP FOR PROPERTY MARKETING

This plan is for illustrative purposes only and should be used as such by any prospective client. Whilst every attempt has been made to ensure the accuracy of the Floor Plan contained here, measurements of the doors, windows, rooms and any other items are approximate and no responsibility is taken for any errors, omissions, or misstatement. The services, systems and appliances shown have not been tested and no guarantee as to the operability or efficiency can be given.

Energy Efficiency Rating

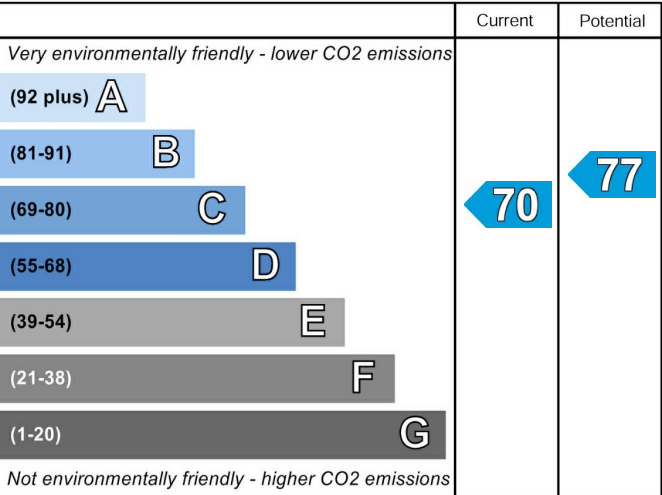


England & Wales

EU Directive 2002/91/EC



Environmental Impact (CO<sub>2</sub>) Rating



England & Wales

EU Directive 2002/91/EC



Whilst every effort is made to give a fair description, the accuracy of these particulars is not guaranteed, neither do they constitute an offer or contract.

**CHURCHILL & MATHESONS ESTATE AGENTS** have not tested any apparatus, equipment, fitting or services and so cannot verify that they are in working order. The buyer is advised to obtain verification from their solicitor or surveyor. Measurements are correct to within +/- 6 A sonic tape is used. None of the statements contained in these particulars or any of our properties are to be relied upon as a representation of fact.