

# Lugus HOMES



## Nine Elms Lane, London

£4,500 Per month



This spacious three-bedroom apartment in the prestigious Riverside Court development offers outstanding value for its prime riverside location on the South Bank of the River Thames.

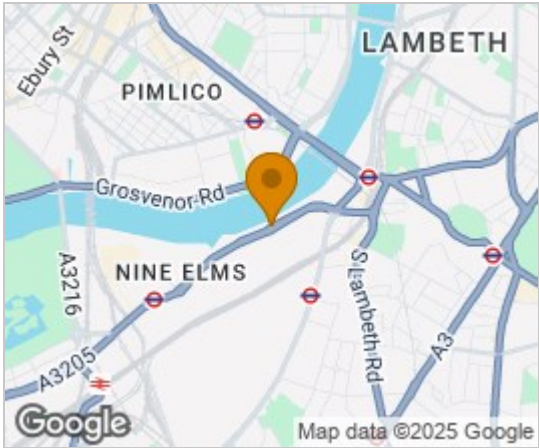
The property provides approximately 1,164 sq. ft of well-planned living space. It comprises three generous double bedrooms with built-in wardrobes, two bathrooms, a fully equipped kitchen, and a bright, expansive reception room with stunning views of the River Thames.

Perfectly situated for transport and local amenities, Riverside Court is just 0.4 miles from Vauxhall Station (Victoria Line and National Rail) and 0.5 miles from Nine Elms and Battersea Power Station (Northern Line), offering easy access to Central London and the West End. A selection of shops and eateries, including Waitrose, Sainsbury's, and numerous independent cafés and bars, are all within walking distance.

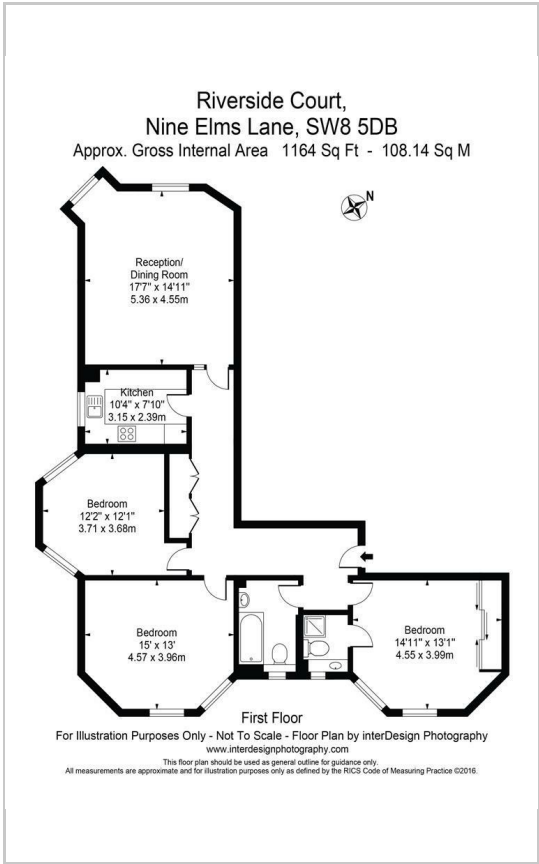
Further benefits of the property include fully furnished, a gated car parking space, on-site porter service, and heating and hot water is included in the rent.



Area Map



Floor Plans



Energy Efficiency Graph



These particulars, whilst believed to be accurate are set out as a general outline only for guidance and do not constitute any part of an offer or contract. Intending purchasers should not rely on them as statements of representation of fact, but must satisfy themselves by inspection or otherwise as to their accuracy. No person in this firms employment has the authority to make or give any representation or warranty in respect of the property.