

Adam Hayes - East Finchley Office - Lettings 158 High Road, East Finchley, London, N2 9AS

Tel: 0208 883 2621 Email: [info@adam-hayes.co.uk](mailto:info@adam-hayes.co.uk) Web: [www.adam-hayes.co.uk](http://www.adam-hayes.co.uk)

High Road, London, N2 9AE

£2,200 PCM

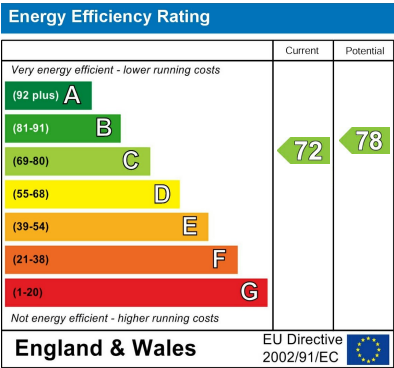
 3 Bedrooms  1 Bathrooms  1 Receptions

Key Features

- Newly Decorated Throughout
- Purpose Built Duplex Apartment
- Three Bedrooms
- Spacious Kitchen
- Large Reception
- Guest WC
- New Carpets

Other Information

Council Tax Band: D  
Length of Tenancy: Long Let  
Deposit: £2,305



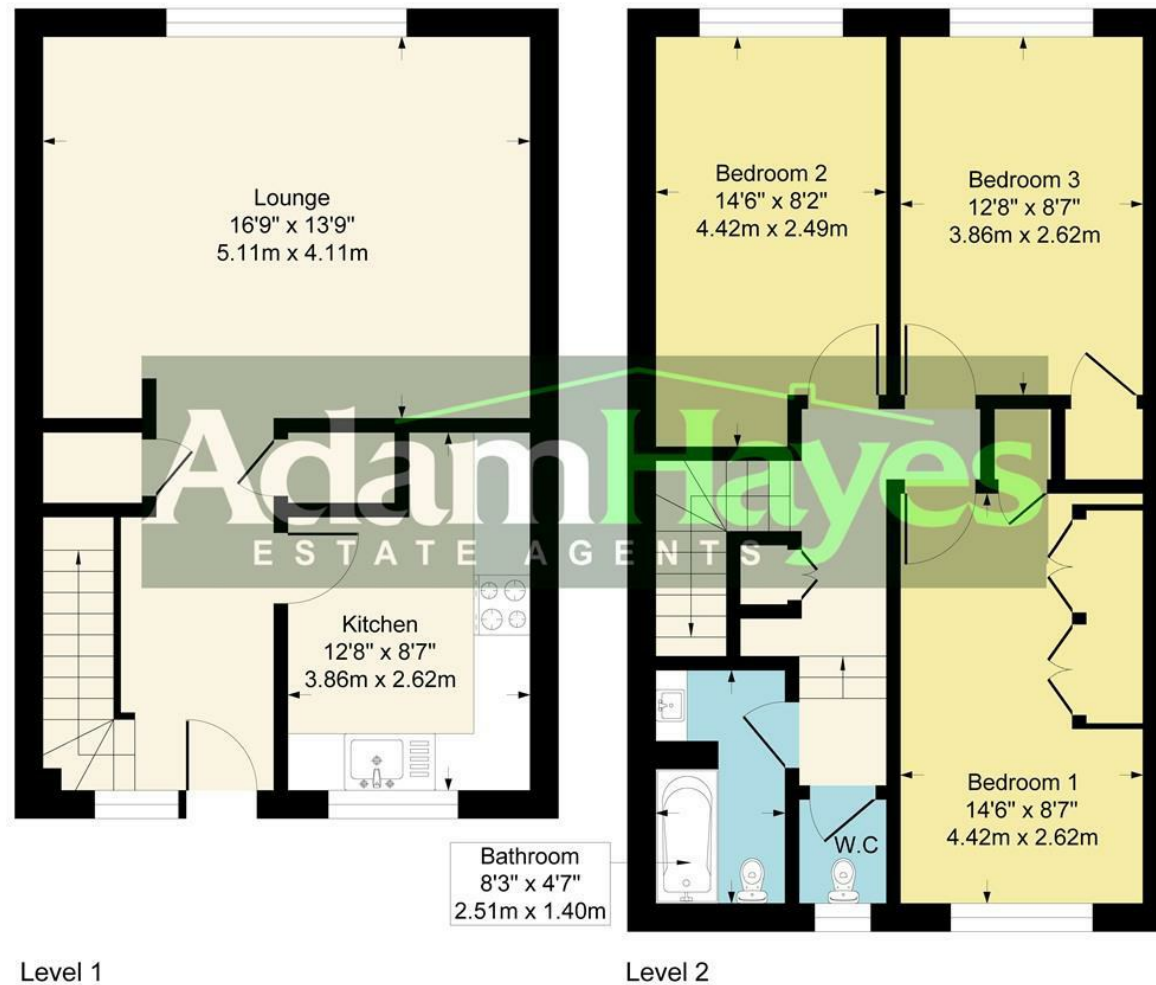
Nearest Stations

- East Finchley

Property Description

A newly decorated and generously proportioned three double bedroom duplex apartment arranged over the first and second floors of this purpose-built development. The property features a spacious lounge, a modern fitted kitchen, ample storage, and a contemporary bathroom, along with the added convenience of a separate guest WC. Additional benefits include new carpets throughout, gas central heating and double glazing. This bright and well-presented apartment is ideally located within easy reach of East Finchley Tube Station (Northern Line), with excellent local shops, cafes, and amenities nearby. Early viewings are highly recommended.

**Approximate Gross Internal Area**  
**989 sq ft - 92 sq m**



Although every attempt has been made to ensure accuracy, all measurements are approximate.  
This floorplan is for illustrative purposes only and not to scale.  
Measured in accordance with RICS Standards.

These particulars, whilst believed to be accurate, are set out as a general outline only for guidance and do not constitute any part of an offer or contract. Intending purchasers or prospective tenants should not rely on them as statements or representation of fact, but must satisfy themselves by inspection or otherwise as to their accuracy. We have not carried out a detailed survey, not tested the services, appliances and specific fittings. Room sizes should not be relied upon for carpets and furnishings. The measurements given are approximate. No person in this firm's employment has the authority to make or give any representation or warranty in respect of the property.