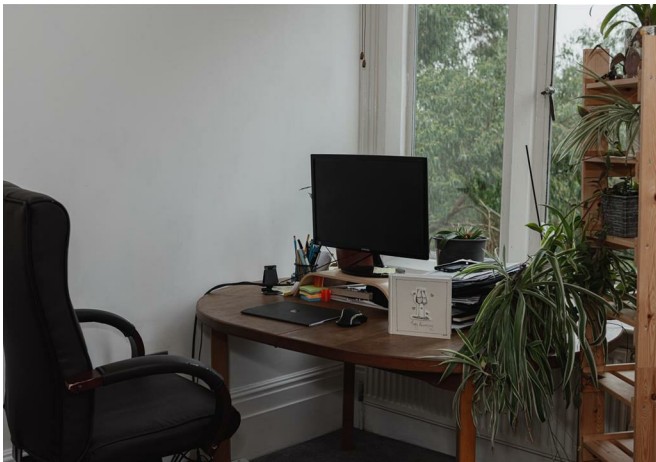




Royal Earlswood Park, Redhill

£1,500 Per Month

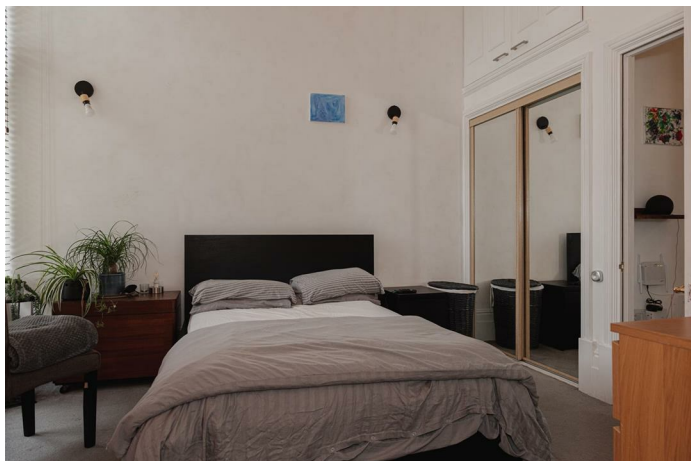




“

Ralph James offers a Grade II flat in Victoria Court, Royal Earlswood Park. Ideal for professionals, it's fully furnished with 13-foot ceilings, loft storage, and access to communal grounds, gym, and pool. Includes two parking spaces, near Earlswood Station.

”



Ralph James is delighted to offer a stunning Grade II listed flat within the prestigious Victoria Court, located in the sought-after Royal Earlswood Park.

Ideal for a young couple or single professionals, this property is especially convenient for those working in the medical or airline industries, with its proximity to the hospital and airport.

The flat is fully furnished and finished to an exceptional standard, ready for immediate occupancy. As a period property, it boasts impressive 13-foot ceilings and larger-than-average double-glazed windows, flooding the space with natural light and creating a bright, airy ambiance. For added convenience, the landlord has also incorporated a small loft space for extra storage.

Residents of Royal Earlswood Park enjoy access to extensive grounds, featuring lakes, ponds, an orchard, and exclusive use of a communal gym and pool. The property also includes two private parking spaces, with additional visitor bays available for guests.

Earlswood Station is just a short walk away, with private grounds providing convenient access. From here, you can reach Gatwick Airport in just 15 minutes or London in 45 minutes by train.

Need to know

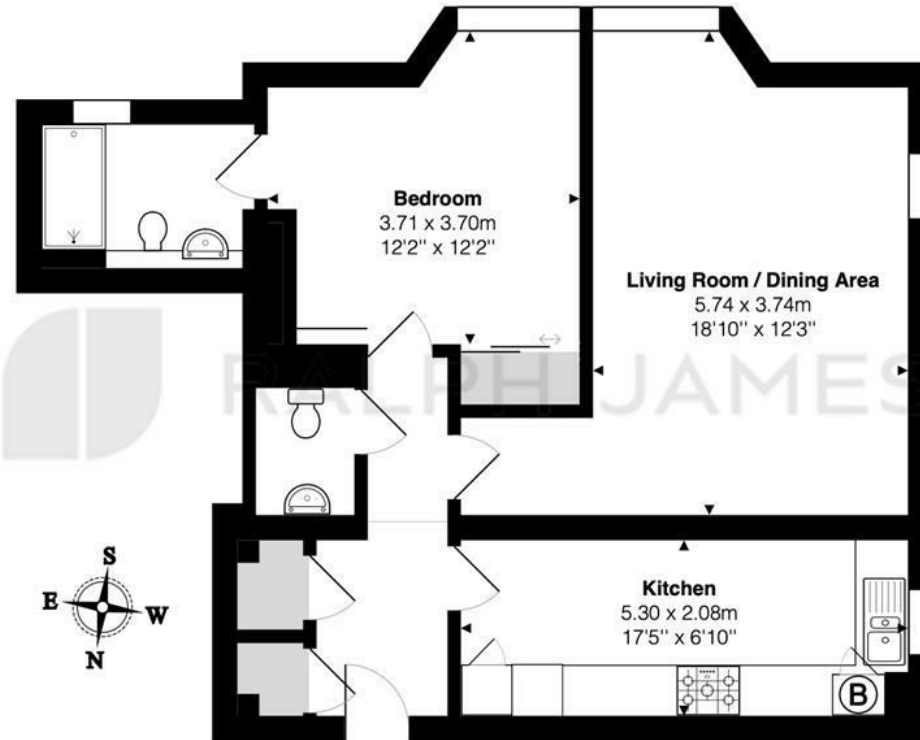
- Ralph James presents a stunning Grade II listed flat in the prestigious Victoria Court, Royal Earlswood Park.
- Ideal for young couples or single professionals, particularly those in the medical or airline sectors, due to its proximity to the hospital and airport.
- Fully furnished and finished to an exceptional standard, the flat is move-in ready.
- Features impressive 13-foot ceilings and larger-than-average double-glazed windows, creating a bright, spacious feel with abundant natural light.
- Landlord has added a small loft space for extra storage.
- Residents enjoy access to expansive grounds, including lakes, ponds, an orchard, plus a communal gym and pool.
- The property includes two private parking spaces, with additional visitor parking bays available.
- Conveniently located near Earlswood Station, offering 15-minute train access to Gatwick and 45-minute access to London.
- EPC: E
- Council: D

Interested?

redhill@ralphjames.co.uk
01737 765 555

1

ralphjames.co.uk



Second Floor Flat

Victoria Court, Royal Earlswood Park, Redhill

Total Area: 64.7 m² ... 696 ft²

FOR ILLUSTRATIVE PURPOSES ONLY.

Whilst every attempt has been made to ensure the accuracy of the floor plan shown, all measurements, positioning, fixtures, features, fittings and any other data shown are an approximate interpretation for illustrative purposes only and are not to scale.

No responsibility is taken for any error, omission, miss-statement or use of data shown.

The above statement applies to both 'Still Moving London LTD' and the Company or individual displaying this floor plan.

Unauthorised reproduction prohibited.

© Still Moving London LTD (www.stillmoving.london)

 RALPH JAMES