



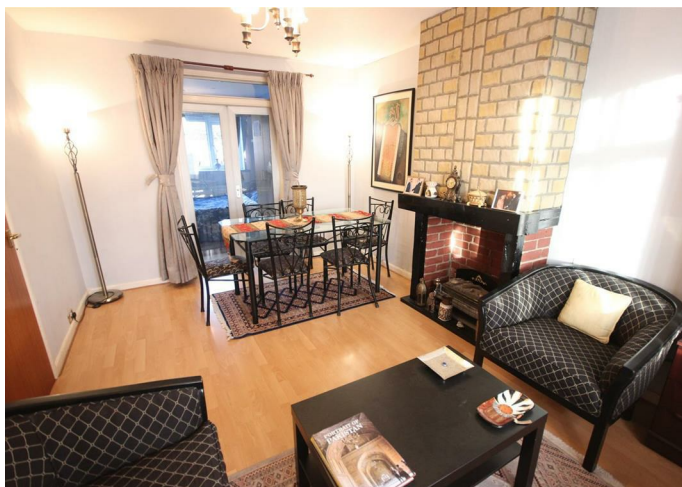
House - Terraced

**WATLING AVENUE,
BURNT OAK,
EDGWARE, LONDON,
HA8 0NB**

PCM

£2,750 PCM

FEATURES



4 Bedroom House - Terraced located in Edgware

Maxwell Estates are pleased to offer this 4 bedroom, 2 bathroom, 2 reception family home. Located in Edgware, this property is within a 1-mile radius to Burnt Oak Underground Station (Northern Line) and all essential amenities along with Outstanding Ofsted rated schools.

Key Features:

- 2 receptions
- 2 double rooms (2 single rooms)
- 2 Bathrooms

Exterior:

- Spacious garden
- Shed

Call us on


0208 952 0808

info@maxwellestates.co.uk

www.maxwellestates.co.uk

Council Tax Band

D

Energy Efficiency Rating		
	Current	Potential
<i>Very energy efficient - lower running costs</i>		
(92 plus) A		
(81-91) B		
(69-80) C		
(55-68) D		
(39-54) E		
(21-38) F		
(1-20) G		
<i>Not energy efficient - higher running costs</i>		
England & Wales		EU Directive 2002/91/EC 

Agents Note: Whilst every care has been taken to prepare these particulars, they are for guidance purposes only. All measurements are approximate and are for general guidance purposes only and whilst every care has been taken to ensure their accuracy, they should not be relied upon and potential buyers are advised to recheck the measurements.

