



Marsham Street, SW1P | £3,800 Per Month



TUCKERMAN
E S T A T E A G E N T S
PROPERTY PROFESSIONALS

Marsham Street, London

Available to let, this generously proportioned second-floor apartment is set within one of Westminster's most sought-after mansion blocks, offering over 1,000 square feet of well-arranged living space and excellent amenities.

The apartment features a large reception room with ample space for both living and dining, complemented by a separate fitted kitchen with good storage and preparation areas. There are two comfortable double bedrooms, with the principal bedroom benefiting from its own en-suite bathroom. A further guest bathroom is accessed from the hallway.

Residents of Marsham Court enjoy the services of a 24-hour porter team, lift access, and a superb central location close to the River Thames, St James's Park, and excellent transport links from Westminster, Pimlico and Victoria stations.

Offered on a furnished basis and available from early July, this is a rare opportunity to rent a well-presented apartment in the heart of Prime Central London.





Marsham Street, London

Available

Per Month: £3,800 Per Month

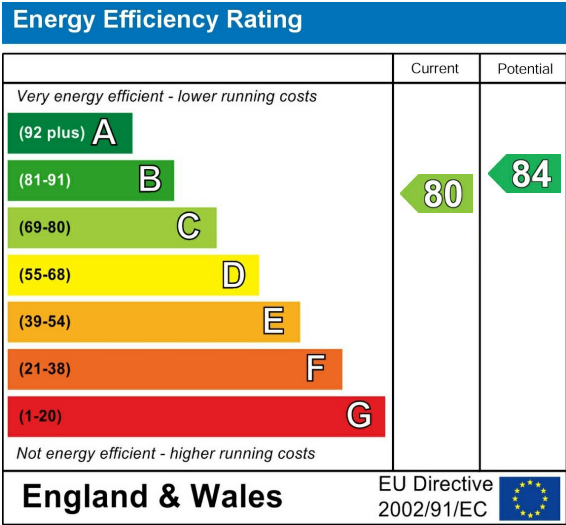
Furnishing: Part furnished

Available From: 18th July 2025

Local Authority: City of Westminster

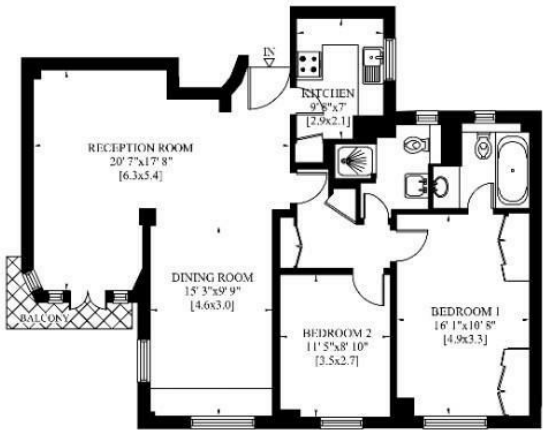
Council Tax Band: F

Approximate Gross Internal Area:
1022.58 sq ft



MARSHAM COURT
MARSHAM STREET
LONDON SW1

Gross Internal Area: 90 Sq. metres
967 Sq. feet



FOURTH FLOOR

020 7222 5510
info@tuckermanresidential.co.uk
52 Moreton Street, London, SW1V 2PB
www.tuckermanresidential.co.uk

Agents Note: Whilst every care has been taken to prepare these sales particulars, they are for guidance purposes only. All measurements are approximate and are for general guidance purposes only and whilst every care has been taken to ensure their accuracy, they should not be relied upon and potential buyers are advised to recheck the measurements

TUCKERMAN
ESTATE AGENTS
PROPERTY PROFESSIONALS