



166 Manor Park Road  
Harlesden  
London  
NW10 4JT  
T 020 8965 2250  
E sales@churchillmathesons.com  
www.churchillmathesons.com

Churchill & Mathesons

Acton Lane, London, NW10 7AL

£600 Per Week

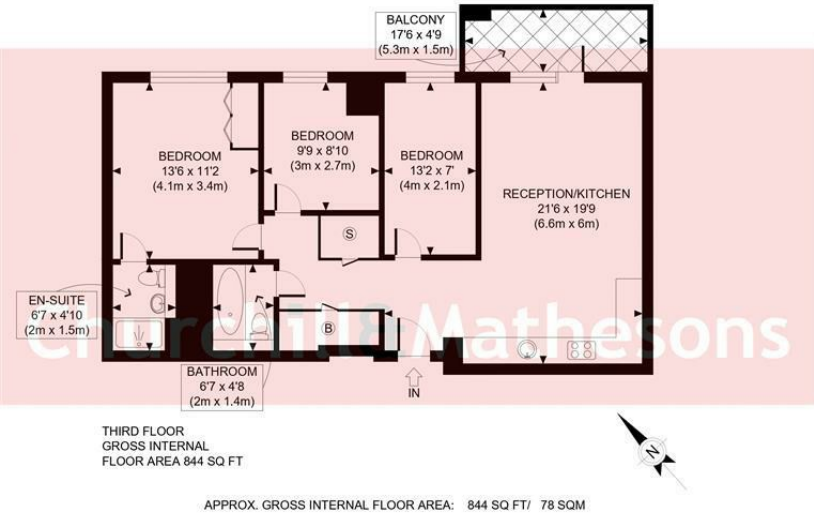


**KEY FEATURES:**

- Newly Built 3 bedroom apartment
- Modern fully fitted kitchen with integrated appliances including Dishwasher
- Spacious bedrooms with built in Wardrobes
- Located close to West Acton station, Harlesden station and Acton Main Line
- FURNISHED ~ AVAILABLE 1 AUGUST

Newly Built 3 bedroom apartment  
\* Modern fully fitted kitchen with integrated appliances including Dishwasher  
\* Open plan reception with private Balcony  
\* Spacious bedrooms with built in Wardrobes  
\* Stylish fully tiled bathrooms  
\* Ensuite room  
\* Video Entryphone System  
Located close to West Acton (Central Line), Harlesden (Bakerloo Line), and Acton Main Line (Elizabeth Line)  
FURNISHED ~ AVAILABLE 1 AUGUST





Energy Efficiency Rating

	Current	Potential
Very energy efficient - lower running costs		
(92 plus) A		
(81-91) B	86	86
(69-80) C		
(55-68) D		
(39-54) E		
(21-38) F		
(1-20) G		
Not energy efficient - higher running costs		
England & Wales	EU Directive 2002/91/EC	

Environmental Impact (CO<sub>2</sub>) Rating

	Current	Potential
Very environmentally friendly - lower CO <sub>2</sub> emissions		
(92 plus) A		
(81-91) B		
(69-80) C		
(55-68) D		
(39-54) E		
(21-38) F		
(1-20) G		
Not environmentally friendly - higher CO <sub>2</sub> emissions		
England & Wales	EU Directive 2002/91/EC	

Whilst every effort is made to give a fair description, the accuracy of these particulars is not guaranteed, neither do they constitute an offer or contract.

**CHURCHILL & MATHESONS ESTATE AGENTS** have not tested any apparatus, equipment, fitting or services and so cannot verify that they are in working order. The buyer is advised to obtain verification from their solicitor or surveyor. Measurements are correct to within +/- 6 A sonic tape is used. None of the statements contained in these particulars or any of our properties are to be relied upon as a representation of fact.