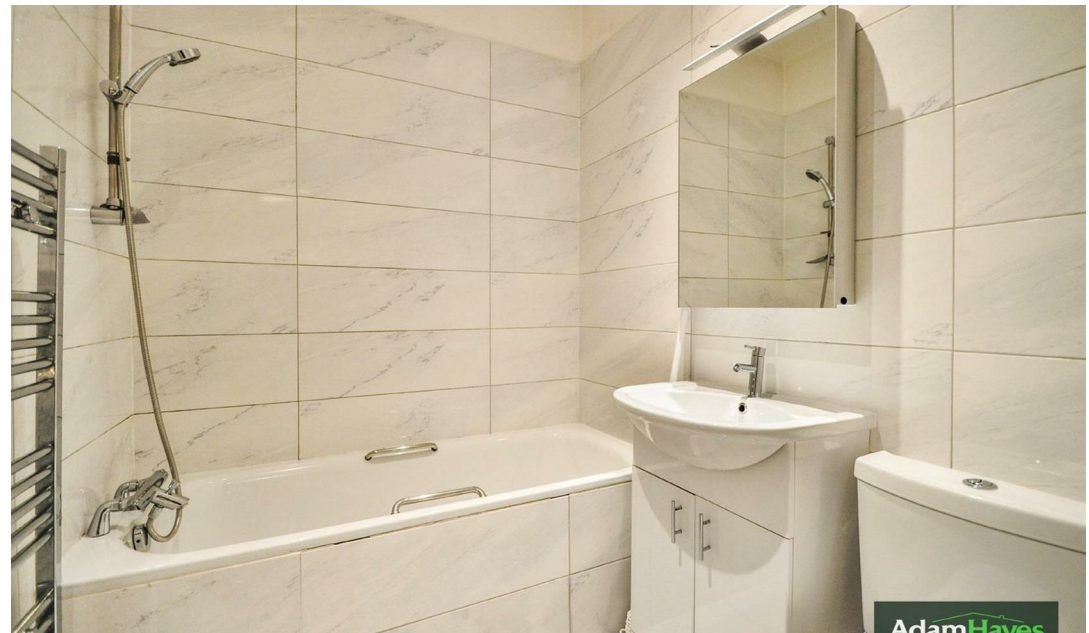




Woodside Grange Road, Woodside Park, N12 8LR

£1,500 PCM



Adam Hayes - North Finchley Office - Lettings 365 Ballards Lane, North Finchley, London, N12 8LL

Tel: 020 8445 4008 Email: [info@adam-hayes.co.uk](mailto:info@adam-hayes.co.uk) Web: [www.adam-hayes.co.uk](http://www.adam-hayes.co.uk)

Woodside Grange Road, Woodside Park, N12 8LR

£1,500 PCM

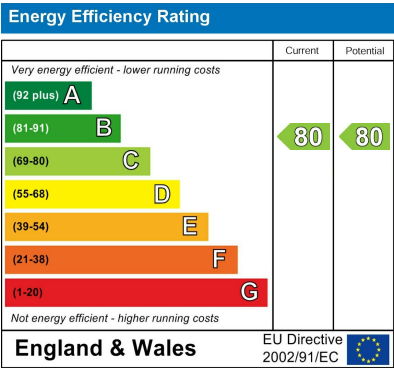
 1 Bedrooms  1 Bathrooms  1 Receptions

Key Features

- A Spacious One Bedroom Apartment
- Purpose Built Block
- 15ft Lounge
- Ample Storage
- Parking
- Excellent Location

Other Information

Council Tax Band: E  
Length of Tenancy: Long Let  
Deposit: £1,730



Nearest Stations

- Woodside Park
- Totteridge & Whetstone

Property Description

Nestled within a highly sought after development is this rare gem - a generously proportioned one-bedroom purpose-built flat with parking. This exceptional residence offers unparalleled convenience, just moments away from Woodside Park Tube Station (Northern Line) and the vibrant North Finchley High Street. Step inside to find a welcoming approximately 15ft lounge, providing an inviting space for relaxation and entertaining. The modern bathroom adds a touch of luxury, while ample storage solutions cater to practical needs effortlessly. Enjoy the comforts of double glazing and gas central heating throughout, ensuring year-round comfort and efficiency. Outside, the convenience continues access to beautifully maintained communal gardens. With its desirable location and array of features, early viewing is highly recommended to secure this lovely property. Don't miss out on the opportunity!

Adam Hayes - North Finchley Office - Lettings 365 Ballards Lane, North Finchley, London, N12 8LL

Tel: 020 8445 4008 Email: info@adam-hayes.co.uk Web: www.adam-hayes.co.uk



**Approximate Floor Area**  
**550 sq. ft.**  
**(51.1 sq. m.)**

**Approx. Gross Internal Floor Area 550 sq. ft. / 51.1 sq. m.**

Whilst every attempt has been made to ensure the accuracy of the floor plan contained here, measurements of doors, windows, rooms and any other items are approximate and no responsibility is taken for any error, omission, or mis-statement. This plan is for illustrative purposes only and should be used as such by any prospective purchaser or tenant. The services, systems and appliances shown have not been tested and no guarantee as to their operability or efficiency can be given.

Copyright V360 Ltd 2017 | [www.houseviz.com](http://www.houseviz.com)

These particulars, whilst believed to be accurate, are set out as a general outline only for guidance and do not constitute any part of an offer or contract. Intending purchasers or prospective tenants should not rely on them as statements or representation of fact, but must satisfy themselves by inspection or otherwise as to their accuracy. We have not carried out a detailed survey, not tested the services, appliances and specific fittings. Room sizes should not be relied upon for carpets and furnishings. The measurements given are approximate. No person in this firm's employment has the authority to make or give any representation or warranty in respect of the property.