



Frimley High Street, GU16 | £1,350 Per Month



TUCKERMAN
ESTATE AGENTS
PROPERTY PROFESSIONALS

Frimley High Street, Frimley

Nestled in the heart of Frimley High Street, this charming apartment offers a delightful blend of comfort and convenience. Spanning an impressive 1,080 square feet, the property boasts a spacious reception room that serves as the perfect gathering space for family and friends.

With three well-proportioned bedrooms, this apartment is ideal for families or those seeking extra space for guests or a home office. The single bathroom is thoughtfully designed, providing both functionality and style.

Living in Frimley means you will enjoy easy access to a variety of local amenities, including shops, cafes, and parks, all within a short stroll from your doorstep. The vibrant community atmosphere enhances the appeal of this location, making it a wonderful place to call home.

This apartment presents an excellent opportunity for those looking to embrace a comfortable lifestyle in a sought-after area.





Frimley High Street, Frimley

Let Agreed

Per Month: £1,350 Per Month

Furnishing: Unfurnished

Available From: 30th May 2025

Local Authority: Surrey Heath Borough Council

Council Tax Band: C

Approximate Gross Internal Area:
1088.00 sq ft

Energy Efficiency Rating

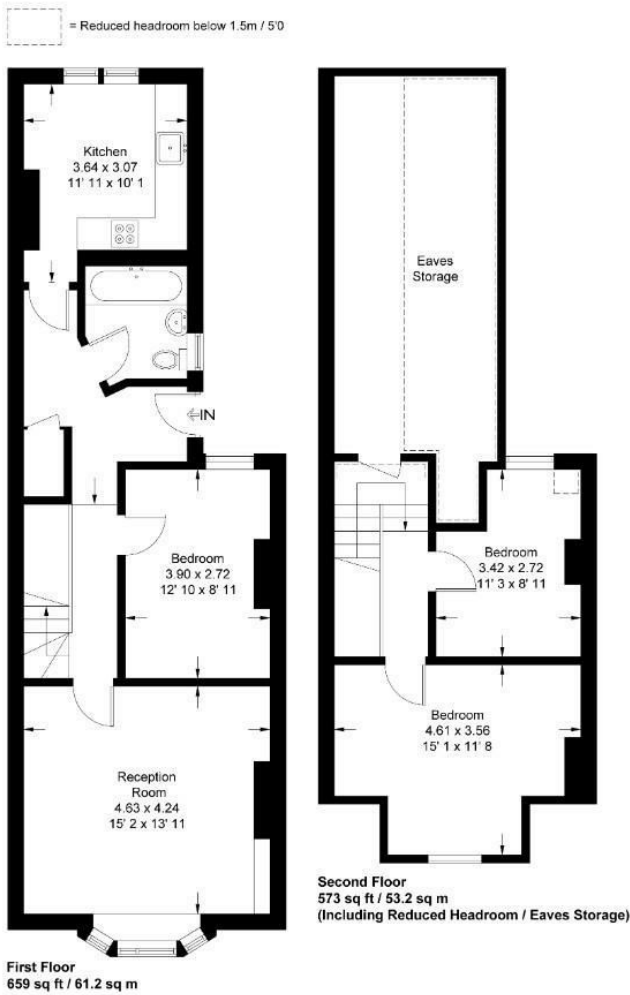
	Current	Potential
Very energy efficient - lower running costs		
(92 plus) A		
(81-91) B		
(69-80) C		
(55-68) D	58	71
(39-54) E		
(21-38) F		
(1-20) G		
Not energy efficient - higher running costs		

England & Wales

EU Directive

2002/91/EC

Frimley High Street
 Approximate Gross Internal Area = 1088 sq ft / 101 sq m
 (Excluding Reduced Headroom / Eaves Storage)
 Reduced Headroom / Eaves Storage = 144 sq ft / 13.4 sq m
 Total = 1232 sq ft / 114.4 sq m



This plan is not to scale and must be used as layout guidance only. All measurements and areas are approximate and should not be relied upon to provide accurate information. This plan must not be relied upon when making property valuations, design considerations or any other such relevant decisions. We accept no responsibility or liability (whether in contract, tort or otherwise) in relation to any loss whatsoever arising from or in connection with any use of this plan or the adequacy, accuracy or completeness of it or any information within it.