



Cleland House, John Islip Street,
Westminster, SW1P

£6,250 Per Month,

NAPIER WATT

T: 0207 935 0011
E: enquiries@napierwatt.co.uk
W: napierwatt.co.uk

35 Berkeley Square, Mayfair, London, W1J 5BF







Description

A stunning two bedroom, two bathroom apartment situated within this highly sought-after luxury development in the heart of Westminster. At over 1,186sq ft, this modern third floor (with lift) apartment features state of the art appliances and is fully furnished to a high standard throughout whilst also having balcony. Benefitting from 24-hour concierge, swimming pool and gym. Both Westminster (Circle, District and Jubilee lines) and Pimlico (Victoria line) Underground stations are within short walking distance as are all of the shops, bars and restaurants of Central London. Victoria station is also close by, providing Underground and Overground train services including the Gatwick Express. Available, furnished.

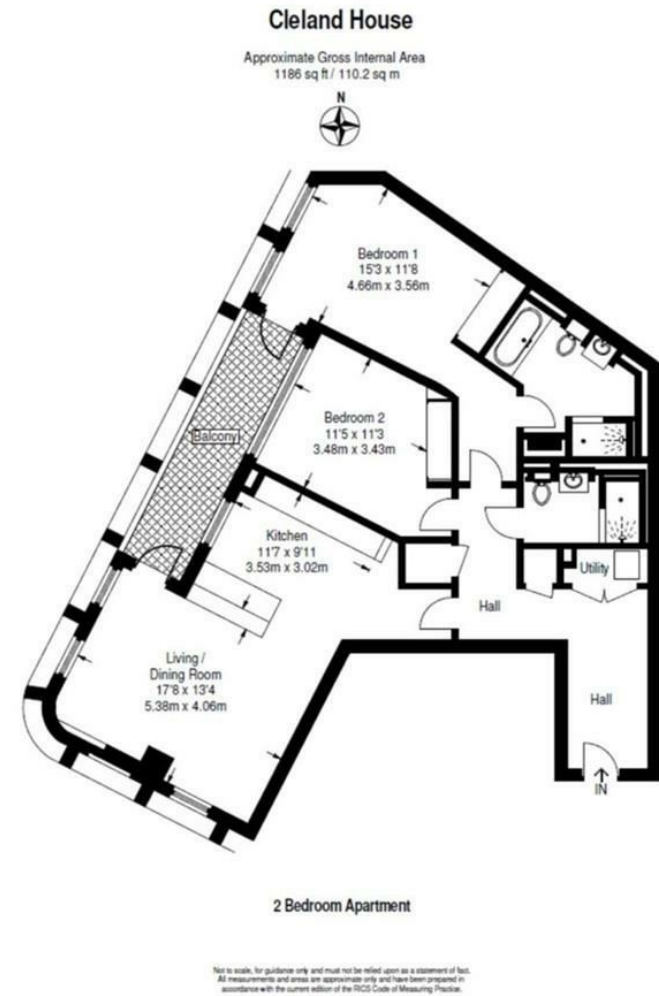
2 Bedrooms : 2 Bathrooms : Balcony : 24-Hour Concierge : Pool : Gym : EPC Rating B : Westminster Council Tax Band G

Key Features

- EXCLUSIVE MODERN BUILDING
- SWIMMING POOL
- GYMNASIUM
- AIR-CONDITIONING
- PASSENGER LIFTS
- 24-HOUR CONCIERGE

Terms

Fees & Charges: Tenancies exceeding £100,000 Per annum £480 inc VAT, Tenancies where a company is a tenant £480 Inc VAT.



IMPORTANT: We would inform prospective purchasers that these sales particulars have been prepared as a general guide only. A detailed survey has not been carried out, nor the services, appliances and fittings tested. Room sizes should not be relied upon for furnishing purposes and are approximate. If floor plans are included, they are for guidance only and illustration purposes only and may not be to scale. If there are any important matters likely to affect your decision to buy, please contact us before viewing the property.