

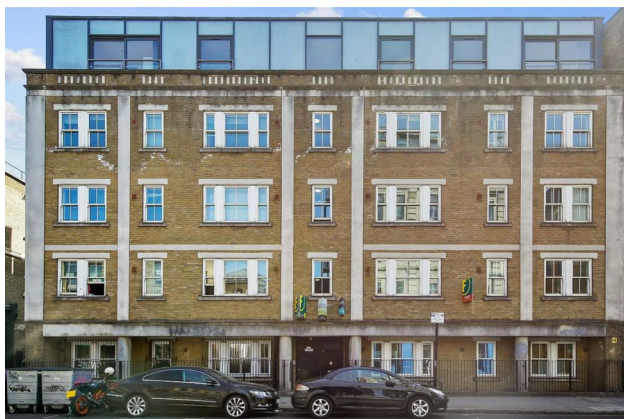
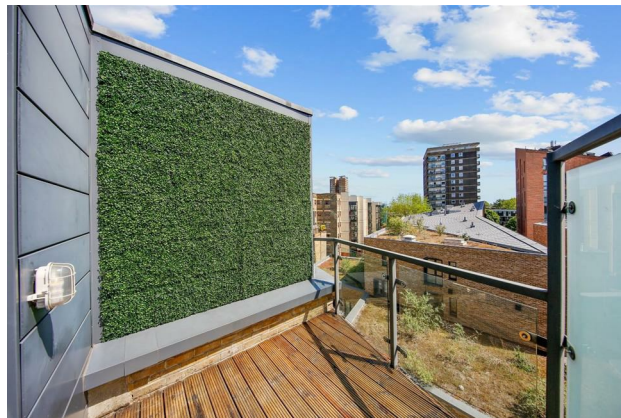
HUNTERS®

HERE TO GET *you* THERE

Flat 17, 40 Hackney Road, London, E2 7PA

£2,750 Per Calendar Month

Property Images



Property Images



HUNTERS[®]

HERE TO GET *you* THERE

Property Images

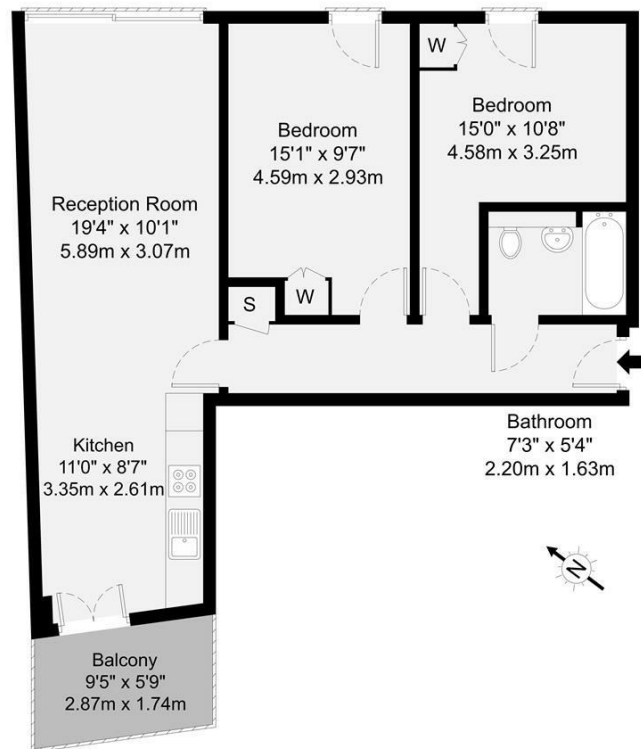
HUNTERS®

HERE TO GET *you* THERE

HUNTERS

Hackney Road, E2

GROSS INTERNAL AREA
65.1 sq m / 700 sq ft



Fourth Floor

GROSS INTERNAL AREA (GIA)
The largest of the property
65.1 sq m / 700 sq ft

TOTAL STORAGE SPACE
Closets, wardrobes and storage total area
1.1 sq m / 11 sq ft

EXTERNAL FEATURES
Central Heating, Terrace, Storage etc.
4.9 sq m / 52 sq ft

RESTRICTED HEAD HEIGHT
The lowest of the property
0.0 sq m / 0.0 sq ft

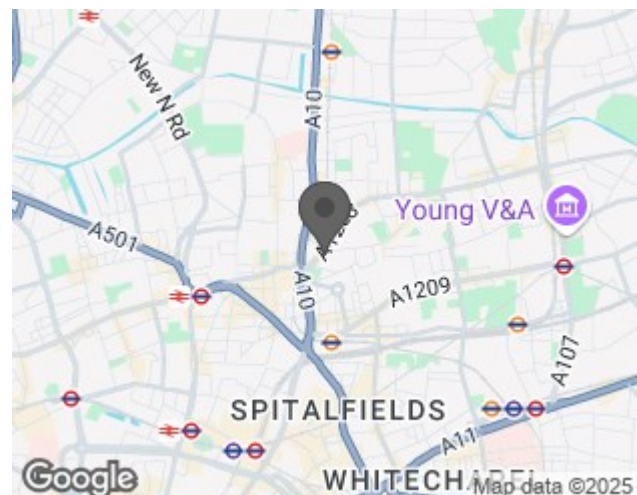
Disclaimer: Floorplan measurements are approximate and are for illustrative purposes only. While we do not doubt the floorplan accuracy and completeness, you or your advisors should conduct a careful, independent investigation of the property in respect of monetary valuation.

Maison
VUE

EPC

Energy Efficiency Rating		
	Current	Potential
Very energy efficient - lower running costs		
(92 plus) A		
(81-91) B	80	80
(69-80) C		
(55-68) D		
(39-54) E		
(21-38) F		
(1-20) G		
Not energy efficient - higher running costs		
England & Wales	EU Directive 2002/91/EC	

Map



Details

Type: Apartment - Purpose Built Beds: 2 Bathrooms: 1 Reception: 1 Tenure:

Summary

Located on the top floor of a modern development in the heart of Shoreditch, this beautifully designed two-bedroom penthouse blends contemporary style with urban comfort. The spacious open-plan living area features floor-to-ceiling windows, wooden flooring throughout, and recessed lighting, creating a bright and inviting atmosphere.

The sleek, fully integrated kitchen flows seamlessly into the lounge, which opens onto a private terrace complete with a striking vertical garden—an ideal space for relaxing or entertaining.

Both double bedrooms are generously sized and include fitted wardrobes, while the high-spec bathroom offers luxury fittings and a clean, modern finish.

Located just moments from Shoreditch's renowned restaurants, boutique shops, galleries, and nightlife, this property places you in one of London's most exciting neighbourhoods. With Old Street, Shoreditch High Street, and Liverpool Street stations all within easy reach, commuting and exploring the city couldn't be more convenient.++

Features

- Penthouse Apartment • Two Double Bedrooms • Open Plan Lounge • Integrated Kitchen • Private Terrace • Excellent Natural Light • Floor To Ceiling Windows • Recessed Lights • Wooden Floors • Central Shoreditch Location