

mi-move

MOVING MADE EASY



Brunswick Road, Sutton

£1,100 pcm

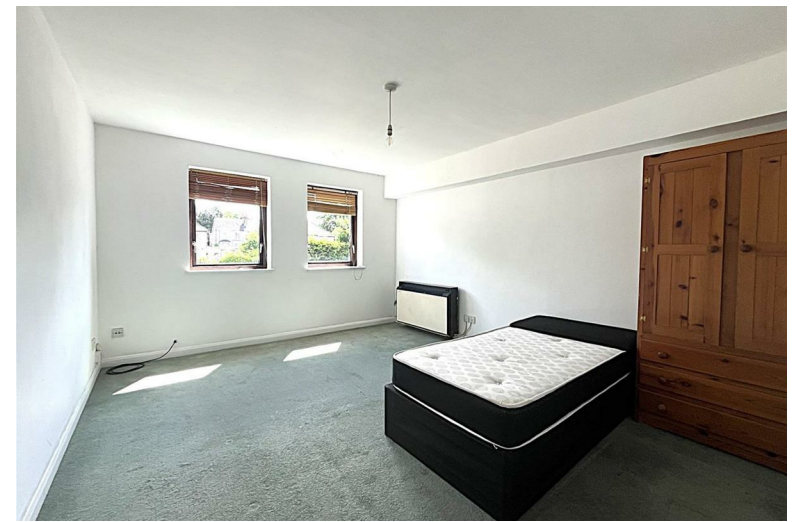
Here's a spacious first floor studio flat overlooking the rear communal grounds of a small purpose built flat within easy walking distance of the Sainsbury's end of Sutton High Street. Sutton Common is the closest mainline railway station and bus routes are within easy reach. The flat is available immediately with white goods included and furniture if required. Don't be disappointed - call now for your appointment to view.

Entering the block through a communal entrance with entryphone leads to the stairs to the first floor and the flat's private entrance. This leads directly into the hallway access to the living room, kitchen and bathroom.

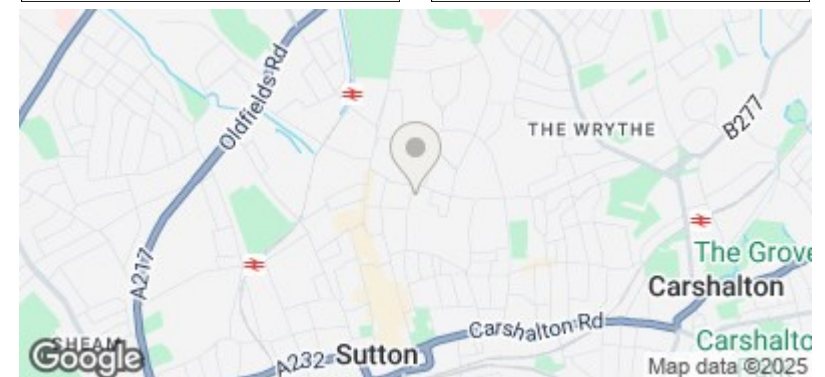
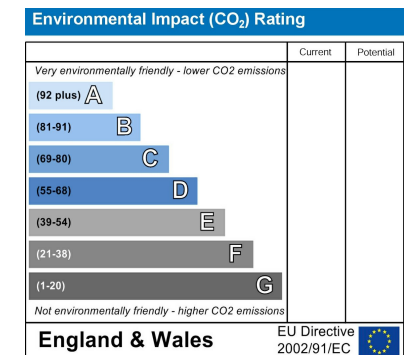
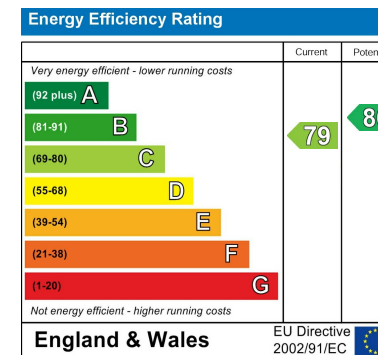
The living room is very spacious and faces east so gets the sun in the mornings and a bed frame and wardrobe could be left if required. The kitchen is fitted with a range of units and includes a new washing machine, a free standing cooker and fridge freezer.

The bathroom is fitted with a three piece suite with a power shower over the bath.

There is reserved off street parking in the communal grounds and the property is close to bus routes between Rosehill and Sutton as well as being within about 15 minutes walking distance of Sutton Common mainline railway station.







Mi-Move Limited, 6 Sutton Plaza, Sutton Court Road, Sutton, Surrey SM1 4FS

Phone: 020 3538 0558 Email: info@mi-move.com Web: www.mi-move.com

Registered in England No: 07979632 VAT No: 132 0989 20

