



18 Old Oak Common Lane
Acton
London
W3 7EL
T 020 8749 9798
E sales@churchillmathesons.com
www.churchillmathesons.com

Churchill & Mathesons

Sedgeford Road, London, W12 0ND

£288 Per Week



KEY FEATURES:

- Newly Renovated Modern Rooms with En-Suite
- 2 Large Kitchens
- 4 Fridges, 3 washing mashines
- beautifull Garden
- Bike Storage
- ALL BILLS INCLUDED

ALL BILLS INCLUDED

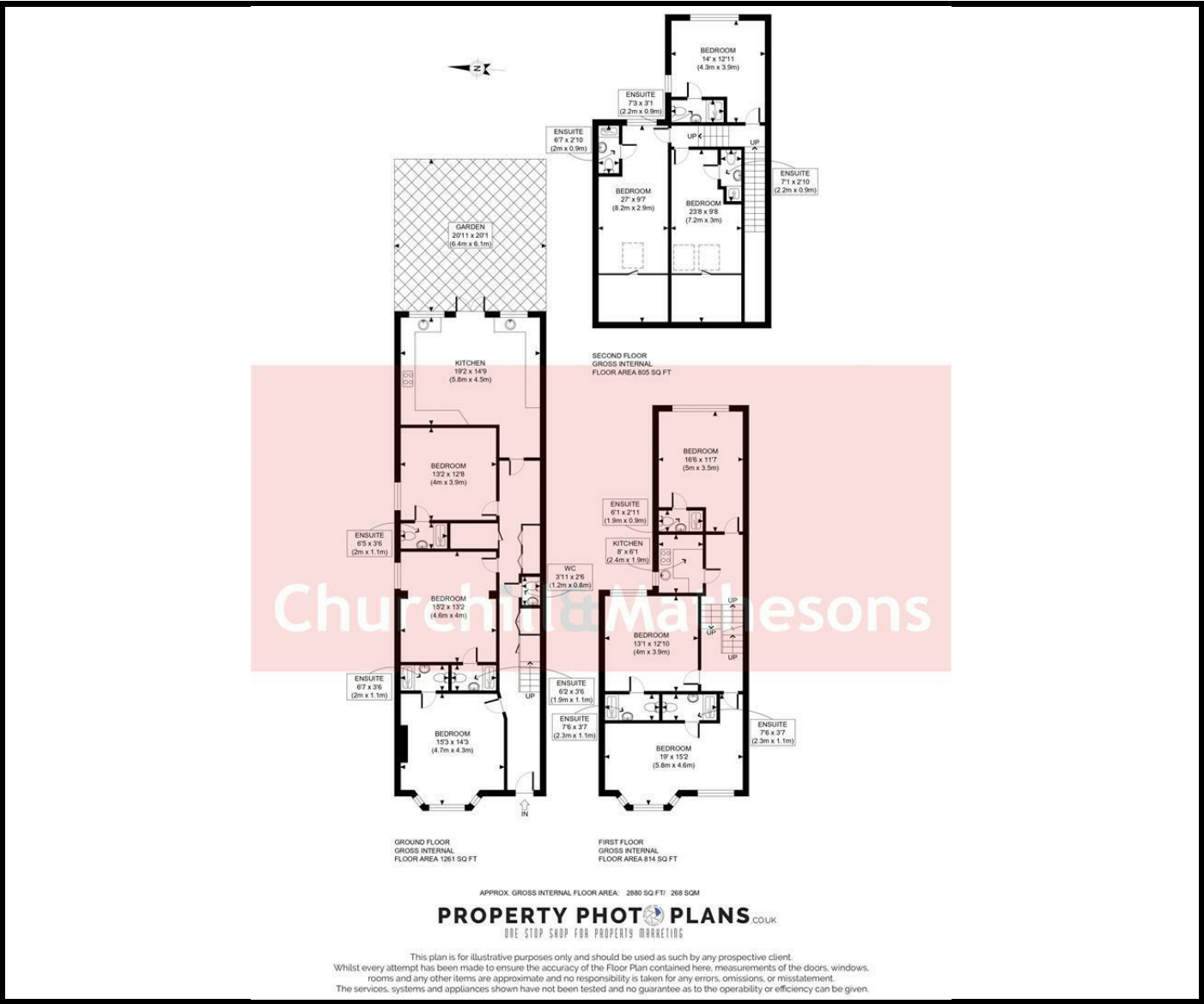
Room with En-Suite for a SINGLE occupancy.

The property features a spacious brand new room complete with an en-suite bathroom, providing a private retreat for relaxation.

The house boasts two large kitchens, ideal for those who enjoy cooking or entertaining guests. These well-appointed spaces are designed to cater to all your culinary needs, making meal preparation a pleasure.

Outside, you will find a lovely garden, perfect for enjoying the fresh air or hosting gatherings with friends and family. Additionally, the property includes bike storage, catering to those who appreciate cycling as a mode of transport or leisure.

With one reception room, one bedroom, and one bathroom, this house is well-suited for individuals or couples seeking a comfortable and stylish home in a vibrant London location. This property presents an excellent opportunity for anyone looking to embrace city living while enjoying the comforts of a well-designed home.



Energy Efficiency Rating

| | Current | Potential |
|---|-------------------------|-----------|
| Very energy efficient - lower running costs | | |
| (92 plus) A | | |
| (81-91) B | | |
| (69-80) C | | |
| (55-68) D | | |
| (39-54) E | | |
| (21-38) F | | |
| (1-20) G | | |
| Not energy efficient - higher running costs | | |
| England & Wales | EU Directive 2002/91/EC | |

Environmental Impact (CO₂) Rating

| | Current | Potential |
|---|-------------------------|-----------|
| Very environmentally friendly - lower CO ₂ emissions | | |
| (92 plus) A | | |
| (81-91) B | | |
| (69-80) C | | |
| (55-68) D | | |
| (39-54) E | | |
| (21-38) F | | |
| (1-20) G | | |
| Not environmentally friendly - higher CO ₂ emissions | | |
| England & Wales | EU Directive 2002/91/EC | |

Whilst every effort is made to give a fair description, the accuracy of these particulars is not guaranteed, neither do they constitute an offer or contract.

CHURCHILL & MATHESONS ESTATE AGENTS have not tested any apparatus, equipment, fitting or services and so cannot verify that they are in working order. The buyer is advised to obtain verification from their solicitor or surveyor. Measurements are correct to within +/- 6 A sonic tape is used. None of the statements contained in these particulars or any of our properties are to be relied upon as a representation of fact.