



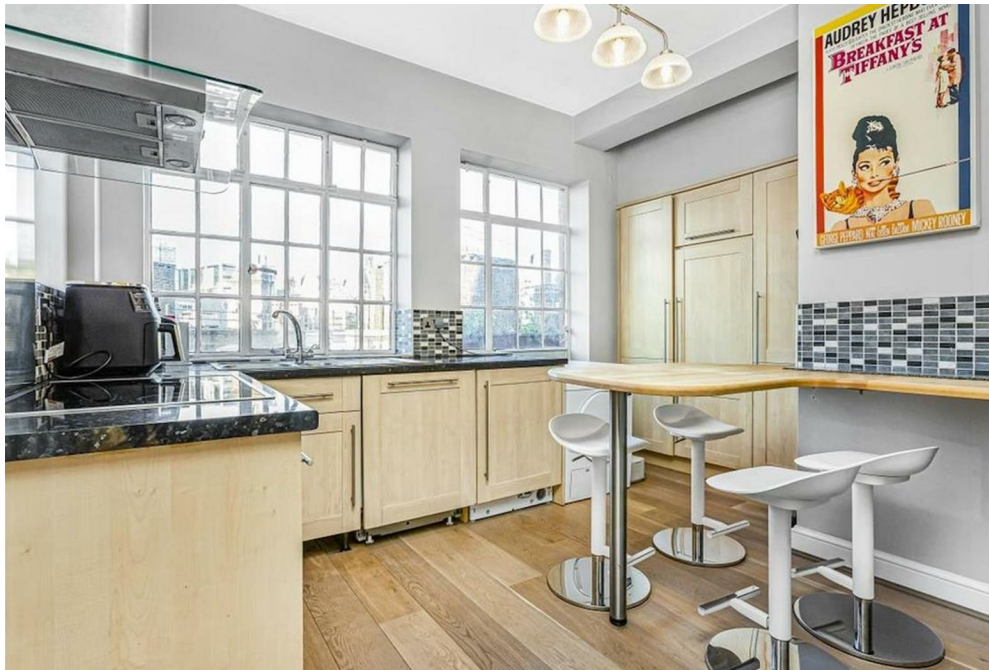
Knightsbridge Court, 12 Sloane Street,
SW1X

Two Bedroom, Two Bathroom - £5,950 Per Month

NAPIER WATT

T: 0207 935 0011
E: enquiries@napierwatt.co.uk
W: napierwatt.co.uk

35 Berkeley Square, Mayfair, London, W1J 5BF







Description

Well-presented, triple aspect, two bedroom, two bathroom apartment set in this highly sought-after block on Sloane Street. At 850sq ft and set on the sixth floor (with lift) this apartment boasts wooden flooring throughout and a stunning finish. The property comprises a living room, modern kitchen, master bedroom with bay windows, bathroom and a second bedroom with en-suite shower room. The building benefits from a daytime porter and is moments from Knightsbridge station as well as the variety of high end shops and some of the best restaurants in the city. Available, furnished.

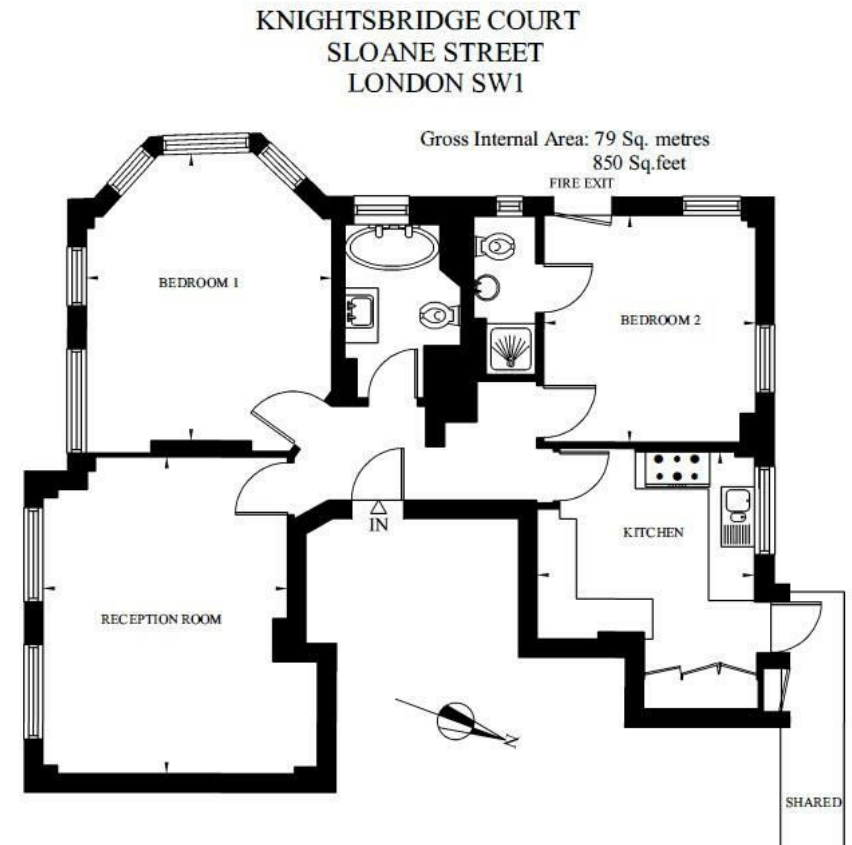
2 Bedrooms : 2 Bathrooms : Porter : Lift : Kensington & Chelsea Council Tax Band G : EPC Rating C

Key Features

- BEAUTIFULLY PRESENTED
- DAYTIME PORTER
- PASSENGER LIFTS
- WOODEN FLOORING

Terms

Fees & Charges: Tenancies exceeding £100,000 Per annum £480 inc VAT, Tenancies where a company is a tenant £480 Inc VAT.



IMPORTANT: We would inform prospective purchasers that these sales particulars have been prepared as a general guide only. A detailed survey has not been carried out, nor the services, appliances and fittings tested. Room sizes should not be relied upon for furnishing purposes and are approximate. If floor plans are included, they are for guidance only and illustration purposes only and may not be to scale. If there are any important matters likely to affect your decision to buy, please contact us before viewing the property.