



PCM

**£3,000 PCM**

**Cavell Street**

London, E1 2BN



Offered of rent is this 3 bedroom apartment located in the heart of Whitechapel.

This modern apartment features a bright reception room, modern fitted bathroom and 3 bedrooms.

The flat is located in Whitechapel, with its colourful Victorian history and now rich with culture. Brick Lane is a short walk from the property, with its independent stores, quirky coffee shops, bars and some great restaurants. The City of London is a 10-minute walk away.

Transport links in this area are excellent and include, Whitechapel station, Aldgate East, Liverpool Street and major bus routes can be found close by.

Furnished

Available end of July

5 weeks Deposit: £3288.46

Council Tax: Band D

12 Month Contract: Breakclause Subject To Offer

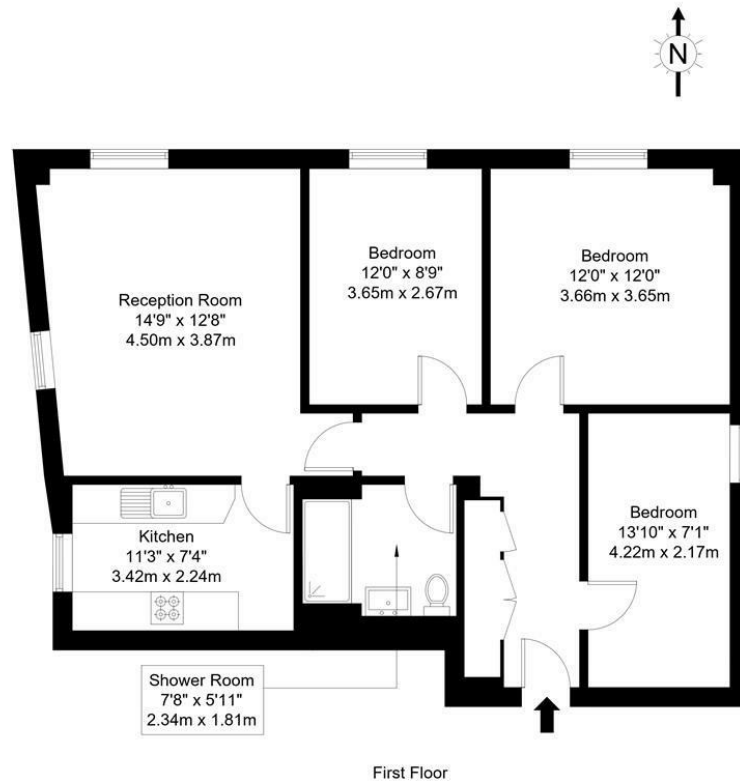






# Wilton Court, E1 2BN

Approx Gross Internal Area = 77.43 sq m / 833 sq ft



Ref :

Copyright **BLEUPLAN**

The Floor plan is not to scale and measurements and areas shown are approximate and therefore should be used for illustrative purposes only. The plan has been prepared in accordance with the RICS code of Measuring Practice and whilst we have confidence in the information produced it must not be relied on. If there is any aspect of particular importance, you should carry out or commission your own inspection of the property.  
Copyright @ BLEUPLAN

Energy Efficiency Rating		
	Current	Potential
Very energy efficient - lower running costs		
(92 plus) <b>A</b>		
(81-91) <b>B</b>		
(69-80) <b>C</b>		
(55-68) <b>D</b>		
(39-54) <b>E</b>		
(21-38) <b>F</b>		
(1-20) <b>G</b>		
Not energy efficient - higher running costs		
<b>England &amp; Wales</b>	EU Directive 2002/91/EC	

Agents Note: Whilst every care has been taken to prepare these particulars, they are for guidance purposes only. All measurements are approximate and are for general guidance purposes only and whilst every care has been taken to ensure their accuracy, they should not be relied upon and potential buyers/tenants are advised to recheck the measurements

## OFFICE ADDRESS

88 Cheshire Street  
London  
E2 6EH

## OFFICE DETAILS

0207 739 6969  
info@peachproperties.com  
www.peachproperties.com