

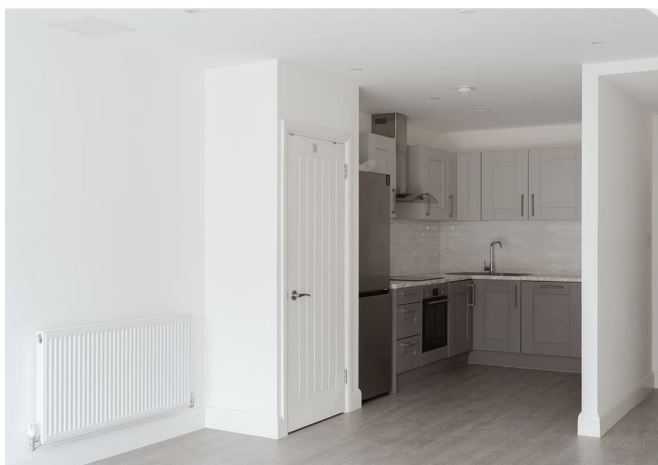


# Victoria Road, Horley

£1,250 Per Month

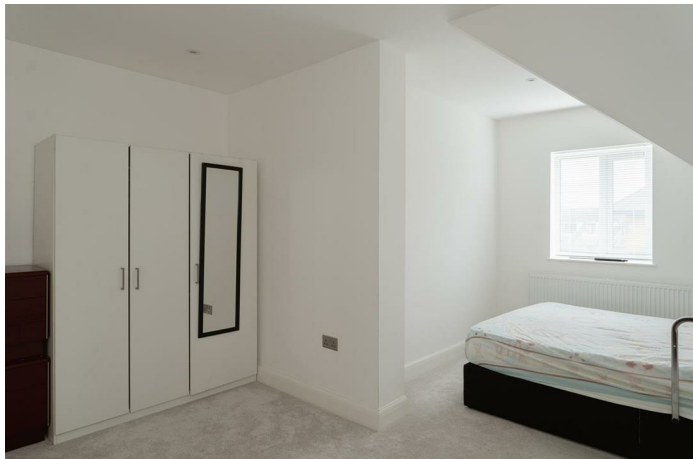






Modern one bedroom apartment in the heart of Horley, just minutes from the station and Gatwick Airport. Features stylish open-plan living, integrated appliances, and a sleek bathroom. Surrounded by local shops, parks, and excellent transport links for commuters and travellers alike.





Located just a 7-minute walk from Horley Train Station, residents benefit from direct links to London Bridge in as little as 39 minutes. Gatwick Airport is also conveniently within a 5-minute drive, making this an ideal base for frequent flyers or airport professionals. For leisure, Horley Recreation Ground and Riverside Garden Park are both nearby, offering green open spaces for morning runs, dog walks, or feeding the ducks by the lake.

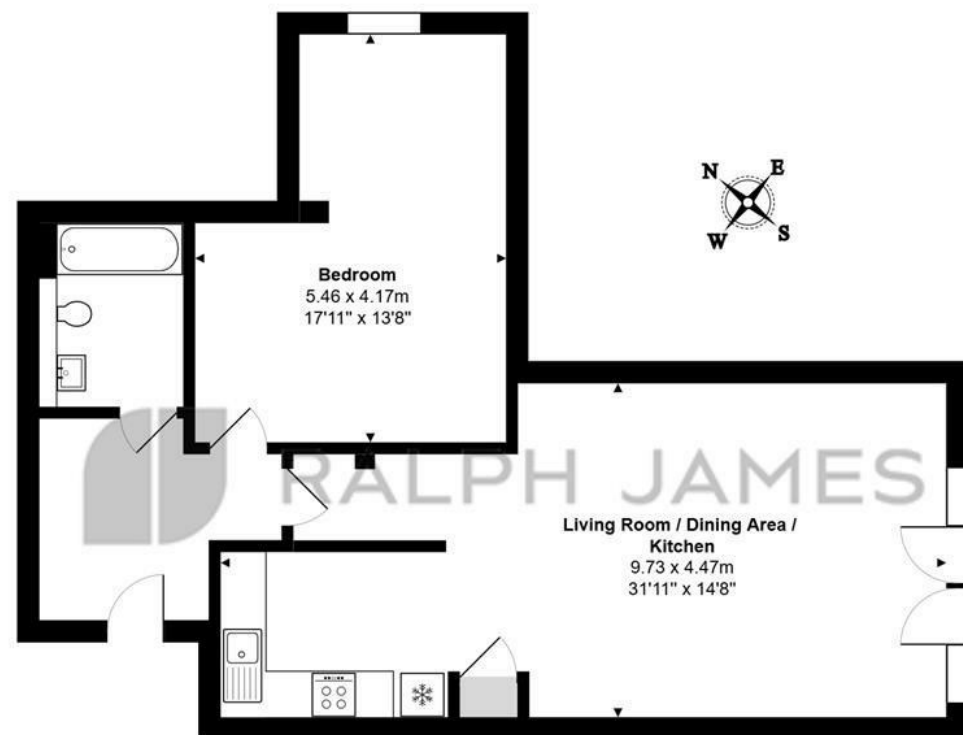
Step into a bright and open-plan apartment finished to a high specification. The grey wood-effect laminate flooring runs throughout, complementing the clean, neutral décor designed to maximise natural light. The dual-toned Shaker-style kitchen in grey and white, paired with a marble-effect worktop, adds a modern yet homely touch.

Integrated appliances include a Bosch oven and hob, along with a Candy washing machine and dishwasher — perfect for modern, fuss-free living. The flexible layout allows room for both a cosy bedroom zone and a functional lounge area with clever furniture placement. The sleek bathroom features a white suite with chrome fittings and is beautifully finished with grey textured tiling to both the walls and floor.

Horley is a well-connected town offering the best of both worlds — convenient travel links and a friendly, community atmosphere. Excellent bus routes via Metrobus provide easy access to Redhill, Three Bridges, Crawley, East Grinstead, and Caterham. On your doorstep, a vibrant high street hosts everything from local boutiques to major supermarkets such as Waitrose and Lidl.

## Need to know

- 1-bedroom apartment in a stylish modern conversion
- Located in the heart of Horley, close to shops, cafés, and local amenities
- Just a 7-minute walk to Horley Station with direct trains to London Bridge
- Only 5 minutes by car to Gatwick Airport — perfect for commuters
- Open-plan living space with grey wood-effect flooring throughout
- Contemporary Shaker-style kitchen with marble-effect worktops and integrated appliances
- Spacious bedroom area and a modern bathroom with grey textured tiling
- Nearby green spaces including Horley Recreation Ground and Riverside Garden Park
- EPC: B
- Council tax: C



### Second Floor

Victoria Road, Horley

Total Area: 71.6 m<sup>2</sup> ... 771 ft<sup>2</sup>

FOR ILLUSTRATIVE PURPOSES ONLY.

All measurements are approximate and for display purposes only

Whilst every attempt has been made to ensure the accuracy of the floor plan shown, all measurements, positioning, fixtures, features, fittings and any other data shown are an approximate interpretation for illustrative purposes only and are not to scale.

No responsibility is taken for any error, omission, miss-statement or use of data shown.

The above statement applies to both 'Still Moving London LTD' and the Company or individual displaying this floor plan.

Unauthorised reproduction prohibited.

© Still Moving London LTD (www.stillmoving.london)

## Interested?

redhill@ralphjames.co.uk  
01737 765 555

1

ralphjames.co.uk

