

PER MONTH

£1,300 Per Month

Thurlow Close

London, E4 9XE

Located just a short walk from Highams Parks Station is this ground floor 1 double bedroom apartment.

The property features a bright reception room with access to fitted kitchen, large double bedroom and family bathroom.

The property benefits from rear parking and a well kept communal garden.

There are a number of restaurants, bars, shops and amenities close by as well as a short walk to the station giving easy access to the City.

Offered furnished.

5 weeks deposit: £1500

12 month tenancy agreement: Breakclause subject to offer

Council tax: Band B

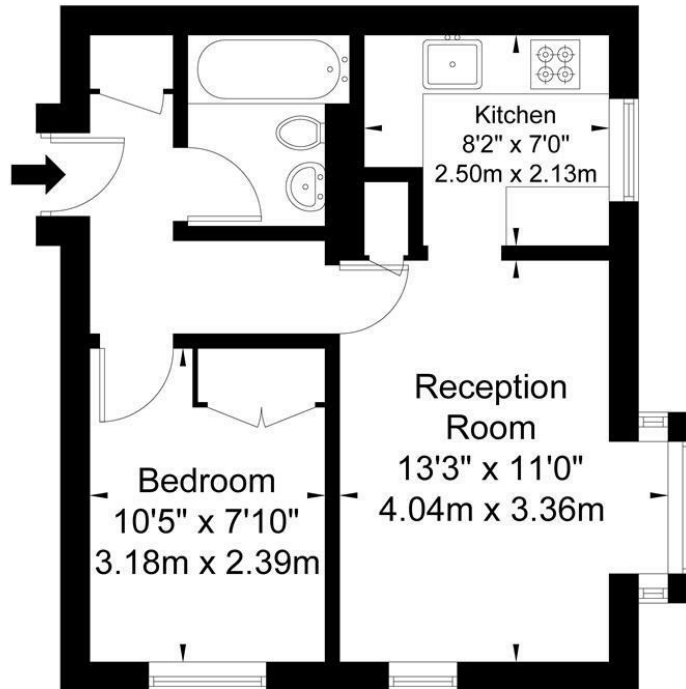
Available: Middle of July





Thurlow Close E4 9XE

Approx Gross Internal Area = 34.9 sq m / 375 sq ft



Ground Floor

Ref

Copyright **BLEU
PLAN**

The Floor plan is not to scale and measurements and areas shown are approximate and therefore should be used for illustrative purposes only. The plan has been prepared in accordance with the RICS code of Measuring Practice and whilst we have confidence in the information produced it must not be relied on. If there is any aspect of particular importance, you should carry out or commission your own inspection of the property.
Copyright @ BLEUPLAN

Energy Efficiency Rating		
	Current	Potential
Very energy efficient - lower running costs		
(92 plus) A		
(81-91) B		
(69-80) C		
(55-68) D		
(39-54) E		
(21-38) F		
(1-20) G		
Not energy efficient - higher running costs		
England & Wales	EU Directive 2002/91/EC	

77

68

Agents Note: Whilst every care has been taken to prepare these particulars, they are for guidance purposes only. All measurements are approximate and are for general guidance purposes only and whilst every care has been taken to ensure their accuracy, they should not be relied upon and potential buyers/tenants are advised to recheck the measurements

OFFICE ADDRESS

88 Cheshire Street
London
E2 6EH

OFFICE DETAILS

0207 739 6969
info@peachproperties.com
www.peachproperties.com