



# To Let

54 Pitchford Street | London | E15

House - Terraced

£1,950 Per Month | Furnished

1 Reception | 2 Bedroom | 1 Bathroom

- Available 14th of July 2025
- Gas Central Heating
- Two Double Bedrooms
- Furnished
- Short Walk to Stratford Station
- Short Walk to Westfield Shopping Centre
- Private Garden
- Local Amenities and Restaurants
- Great Location!

FREEDOM TO MOVE



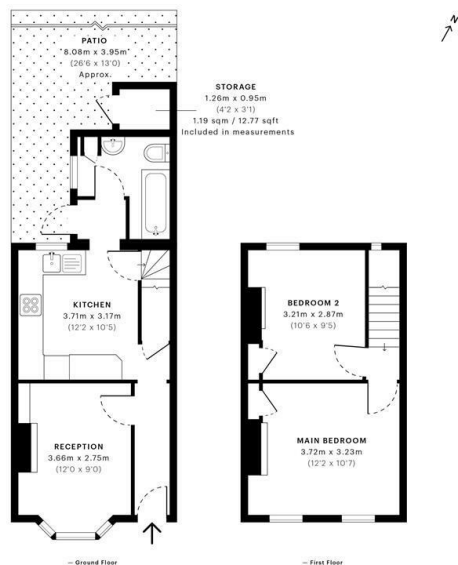


Pitchford Street, E15

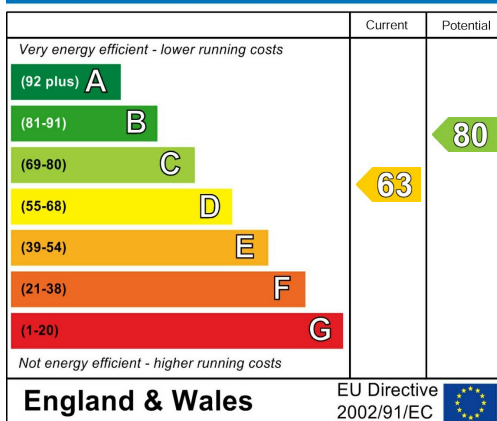
CAPTURE DATE: 10/10/2021 LATEST GA/PDR: 2,278,751

GROSS INTERNAL AREA

56.19 sqm / 604.82 sqft



## Energy Efficiency Rating



Accuracy: References to the Tenure of a Property are based on information supplied by the seller. The agent has not had sight of the title documents. A buyer is advised to obtain verification from their solicitor. Items shown in photographs including, but not limited to, carpets, fixtures and fittings are not included unless specifically mentioned within the sales particulars. They may however be available by separate negotiation. Buyers must check the availability of any property and make an appointment to view before embarking on any journey to see a property. No person in the employment of the agent has any authority to make any representation about the property, and accordingly any information given is entirely without responsibility on the part of the agents, sellers(s) or lessors(s). Any property particulars are not an offer or contract, nor form part of one. Sonic / laser tape: Measurements taken using a sonic / laser tape measure may be subject to a small margin of error. All measurements: All measurements are approximate. Services not tested: The agent has not tested any apparatus, equipment, fixtures and fittings or services and so cannot verify that they are in working order or fit for the purpose. A buyer is advised to obtain verification from their solicitor or surveyor. Mortgage & financial advice: The Hawks mortgage service is provided by London & Country Mortgages the UK's largest independent fee-free mortgage broker, of Beazer House, Lower Bristol Road, Bath, BA2 3BA. Authorised and regulated by the Financial Conduct Authority. Their FCA number is 143002. YOUR HOME IS AT RISK IF YOU DO NOT KEEP UP REPAYMENTS ON A MORTGAGE OR OTHER LOANS SECURED ON IT. Full written quotation available on request. A suitable life policy may be required. Loans subject to status. Minimum age 18. If you are making a cash offer, we shall require written confirmation of the source and availability of your funds in order that our client may make an informed decision.

Hawks Estate Agents are thrilled to present this lovely, well-appointed two bedroom Victorian House on the highly sought Pitchford Street, E15.

Being fantastically located, with less than a 10 minute walk to Stratford Station, as well as Westfield Shopping Centre, and benefiting from a nice private garden, this house will not be available for long.

- Gas Central Heating
- Furnished
- Private Garden
- Less than 10 Minute Walk to Stratford Station (Excellent Transport Links)
- Local Amenities and Restaurants
- Short Walk to Westfield Shopping Centre
- Available from 14th of July 2025!!!

Call now to arrange a viewing.



**Hawks**

Hawks  
11 Albany Parade High Street, Brentford,  
London, TW8 0JW  
T: 0208 568 2342  
E: brentford@hawksproperty.com

