

## 606 BROOKLINE BUILDING 49 FULTON ROAD WEMBLEY, HA9 0DY

£2,080 PER MONTH

Luxury 1-Bedroom Flat in Brand New Fulton & Fifth Development – Regal Homes

Experience modern living in this spacious one-bedroom apartment with a private balcony and underfloor heating, located just 7 minutes from Wembley Park Station – only 2 stops to Baker Street and easy access to Central London.

Part of the prestigious Fulton & Fifth development by Regal Homes, this property offers exceptional amenities, including:

24-hour concierge

**R**  
rice resi

## 606 BROOKLINE BUILDING 49

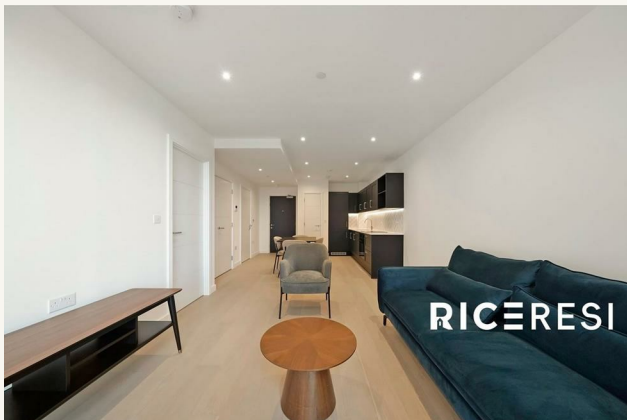
Bedroom

Bathroom

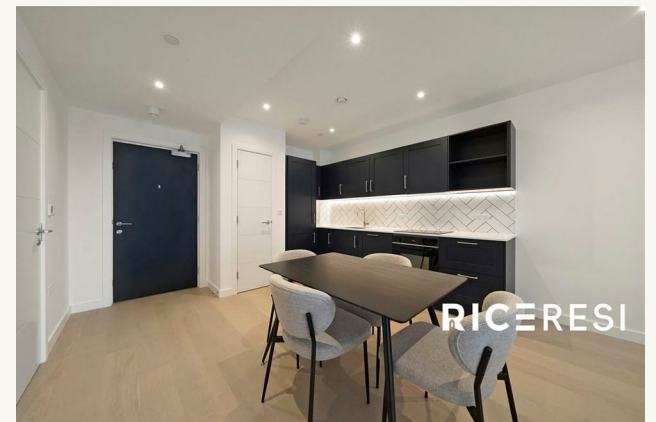
Reception Room/Kitchen

Amenities

Building Exterior



## 606 BROOKLINE BUILDING 49







RICERESI

## 606 BROOKLINE BUILDING 49

### ADDITIONAL INFORMATION

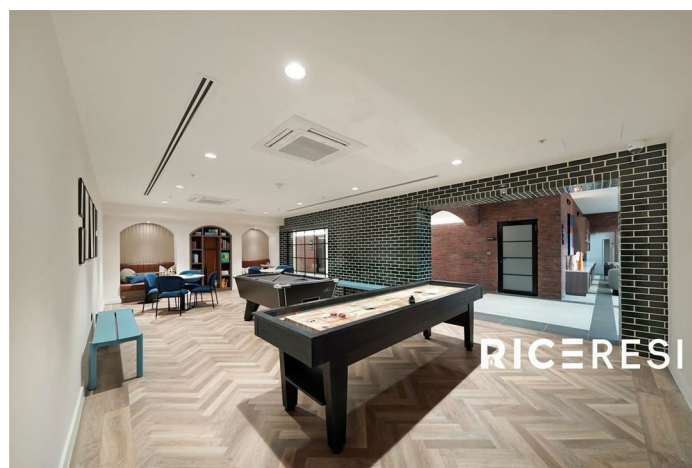
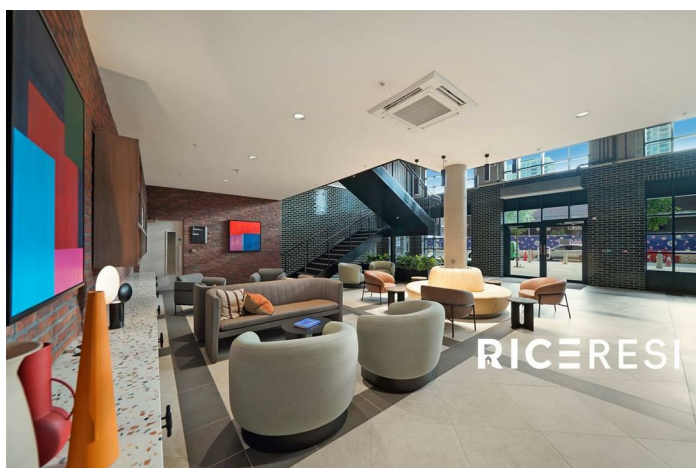
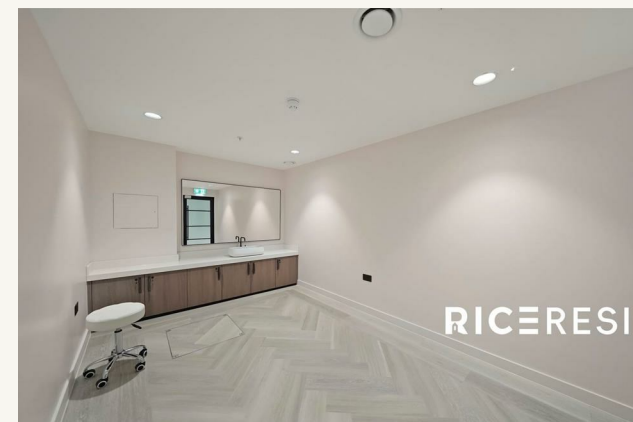
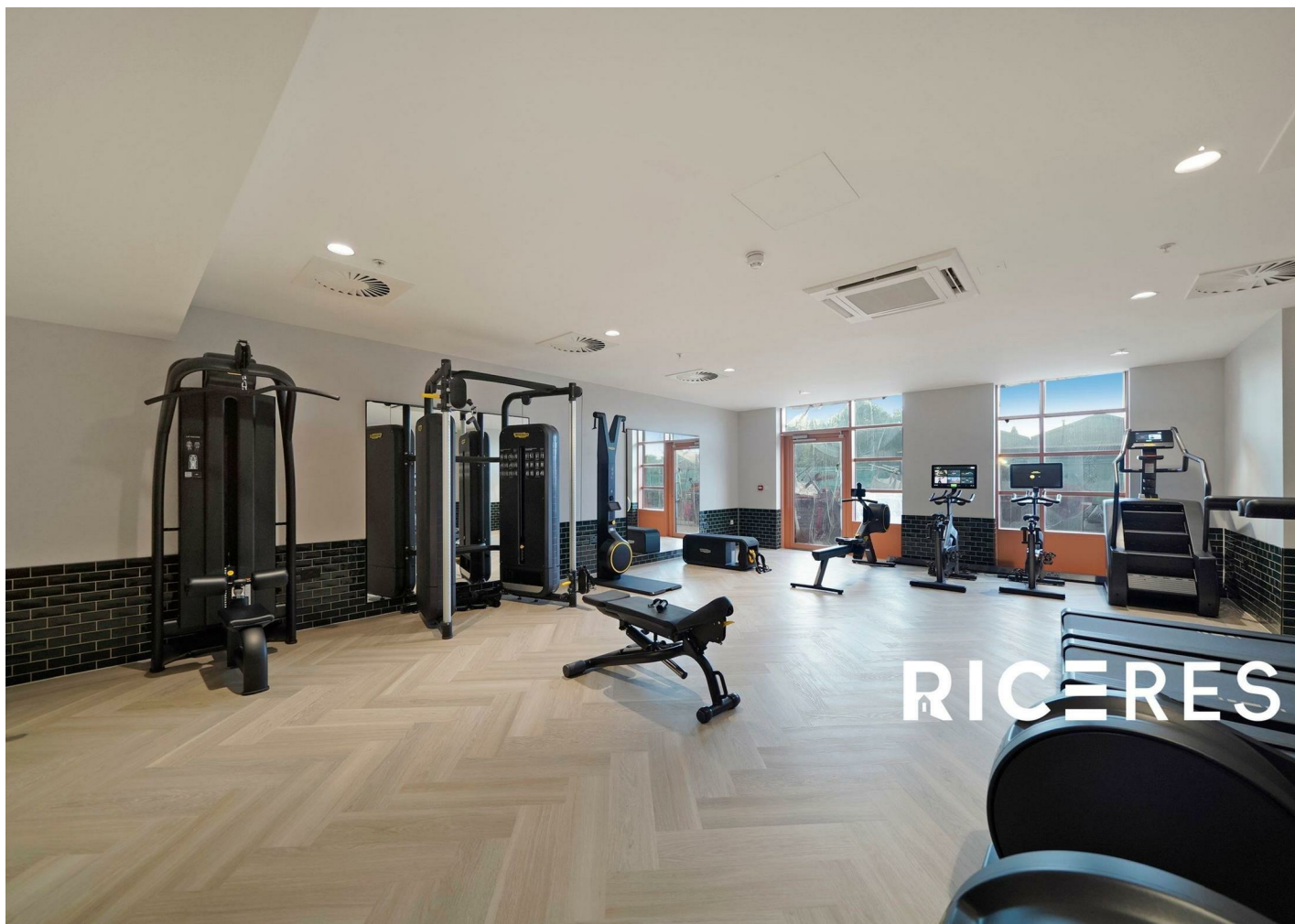
**Local Authority –**

**Council Tax – Band**

**Viewings – By Appointment Only**

**Floor Area – 0.00 sq ft**

**Tenure –**





## Fulton Road, HA9 0DY

Approx Gross Internal Area = 50.24 sq m / 541 sq ft

Balcony = 4.74 sq m / 51 sq ft

Total = 54.98 sq m / 592 sq ft



Ref :

Copyright

**B L E U  
P L A N**

The Floor plan is not to scale and measurements and areas shown are approximate and therefore should be used for illustrative purposes only. The plan has been prepared in accordance with the RICS code of Measuring Practice and whilst we have confidence in the information produced it must not be relied on. Maximum lengths and widths are represented on the floor plan. If there is any aspect of particular importance, you should carry out or commission your own inspection of the property.  
Copyright © BleuPlan



Energy Efficiency Rating		
	Current	Potential
Very energy efficient - lower running costs		
(92 plus) <b>A</b>		
(81-91) <b>B</b>	<b>85</b>	<b>85</b>
(69-80) <b>C</b>		
(55-68) <b>D</b>		
(39-54) <b>E</b>		
(21-38) <b>F</b>		
(1-20) <b>G</b>		
Not energy efficient - higher running costs		
<b>England &amp; Wales</b>	EU Directive 2002/91/EC	

Agents Note: Whilst every care has been taken to prepare these particulars, they are for guidance purposes only. All measurements are approximate and are for general guidance purposes only and whilst every care has been taken to ensure their accuracy, they should not be relied upon and potential buyers/tenants are advised to recheck the measurements

RICE Resi  
Unit 6 12 Pepper Street  
London  
E14 9RP

020 3006 6995  
hello@riceresi.com  
www.riceresi.com

**R**  
rice resi