

PCM

£2,400 PCM

Chilton Street

London, E2 6DZ

Part of a secure, private gated development, a 2 bedroom flat offered for rental and located just a few moments from Brick Lane.

The property features a modern kitchen with white goods, and an open-plan reception room with clean laminate flooring. The bathroom is fitted out in classic white, with bricklayer white tiling. Both of the good sized double bedrooms are carpeted and come with wardrobes/chests of drawers.

Located in a thriving and popular East London neighbourhood, there are dozens of bars, restaurants, independent shops and cafes close by on Cheshire Street and Brick Lane. The Box Park, Spitalfields market, Bethnal Green Road and Hoxton Square are within a short walk.

With Liverpool Street Underground and mainline station within an easy walk and the added benefit of having Shoreditch High-Street and Hoxton Overground stations close by, this property is very well located for city commuters.

The property is offered furnished

5 weeks deposit: £2769

Council tax: Band D

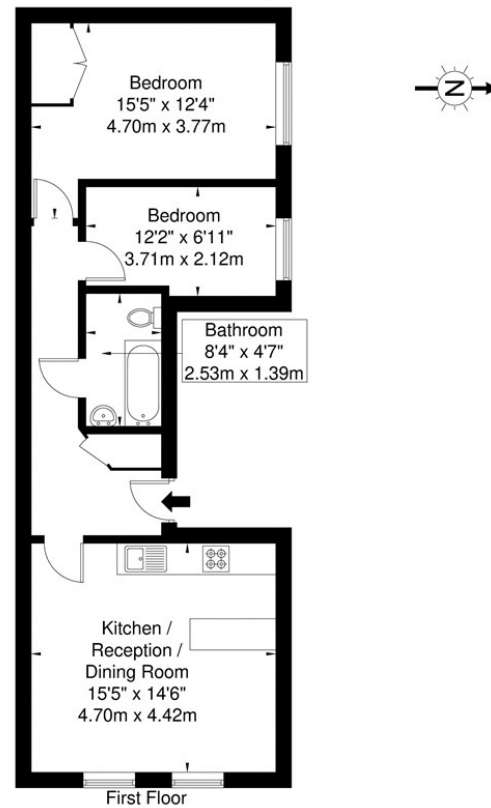
12 month contract: breakclause subject to offer





Swanfield Court, Chilton Street, E2 6DZ

Approx. Gross Internal Area = 57.2 sq m / 615 sq ft



Ref

Copyright

**BLEU
PLAN**

The Floor plan is not to scale and measurements and areas shown are approximate and therefore should be used for illustrative purposes only. The plan has been prepared in accordance with the RICS code of Measuring Practice and whilst we have confidence in the information produced it must not be relied on. If there is any aspect of particular importance, you should carry out or commission your own inspection of the property.
Copyright © BLEUPLAN

Energy Efficiency Rating		
	Current	Potential
Very energy efficient - lower running costs		
(92 plus) A		
(81-91) B		
(69-80) C	77	79
(55-68) D		
(39-54) E		
(21-38) F		
(1-20) G		
Not energy efficient - higher running costs		
England & Wales	EU Directive 2002/91/EC	

Agents Note: Whilst every care has been taken to prepare these particulars, they are for guidance purposes only. All measurements are approximate and are for general guidance purposes only and whilst every care has been taken to ensure their accuracy, they should not be relied upon and potential buyers/tenants are advised to recheck the measurements

OFFICE ADDRESS

88 Cheshire Street
London
E2 6EH

OFFICE DETAILS

0207 739 6969
info@peachproperties.com
www.peachproperties.com