



30 Sidney Avenue

, London, N13 4UY

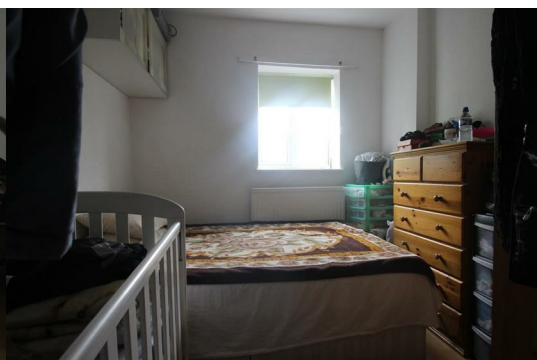
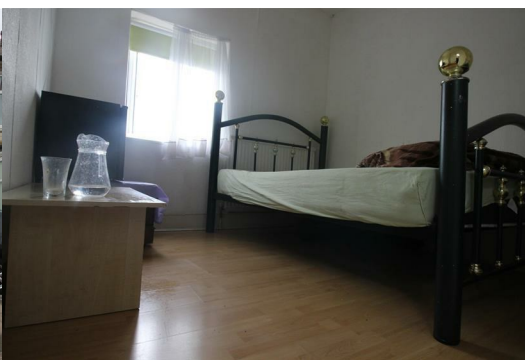
£1,450 Per Month



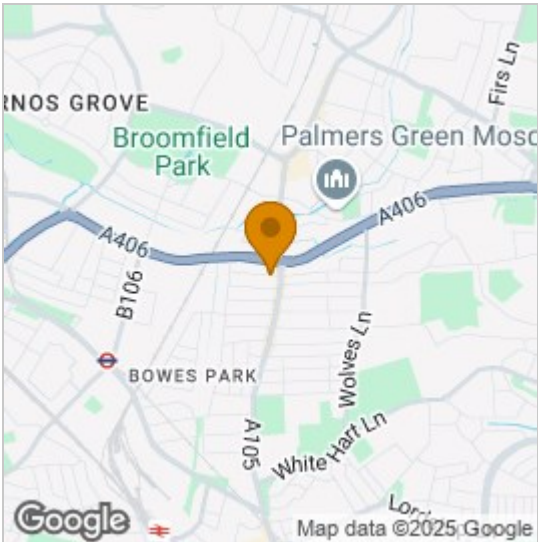
Zuplex are proud to advertise this two bed flat and it has 2 large bedrooms and a seperate living room and kitchen and bathroom.

The flat is located of Green Lanes with local amenities close by including coffee shops, supermarkets, bars and restaurants. The property offers great transport links from Bounds Green and Wood Green Train Stations offering easy access into Central London.

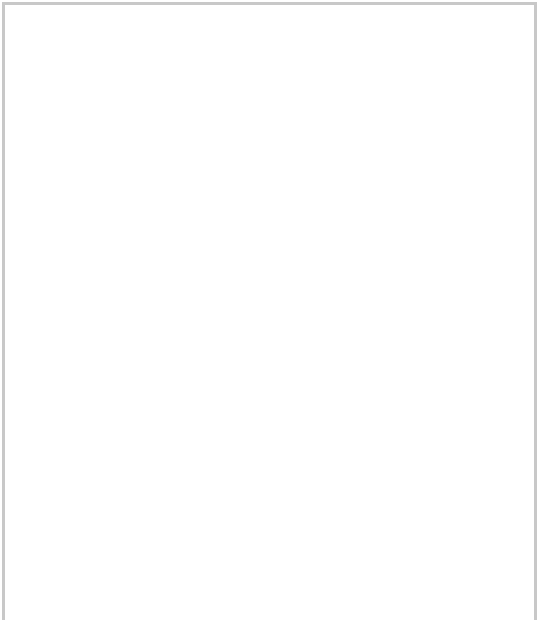
Please contact the Zuplex office to arrange viewings on 0208 888 7599



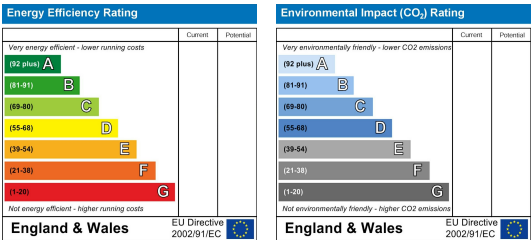
Area Map



Floor Plans



Energy Efficiency Graph



These particulars, whilst believed to be accurate are set out as a general outline only for guidance and do not constitute any part of an offer or contract. Intending purchasers should not rely on them as statements of representation of fact, but must satisfy themselves by inspection or otherwise as to their accuracy. No person in this firms employment has the authority to make or give any representation or warranty in respect of the property.

