



7 Rosecroft Road, Southall, London, UB1 2XH

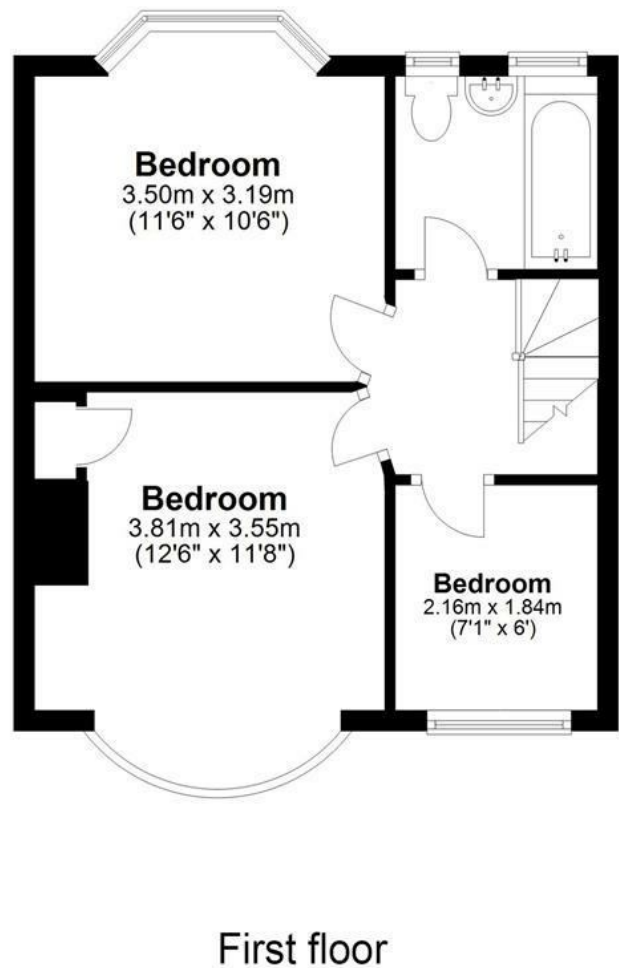
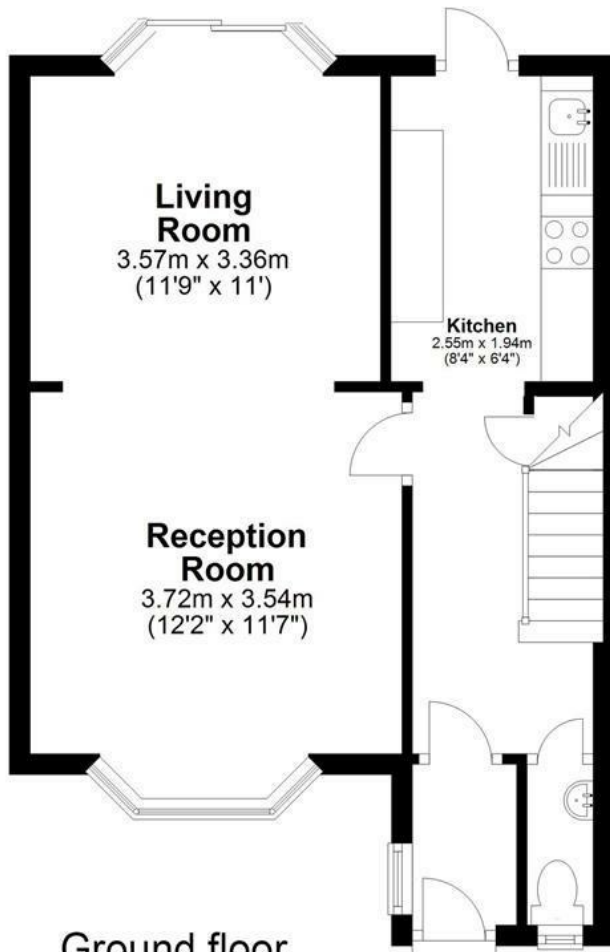
Arron James are delighted to offer this three bedroom, mid-terrace family home to the market. This outstanding property is in good condition and comprises of a large through lounge, fully fitted kitchen, tiled family bathroom as well as a generously sized rooms throughout the property.

Located within easy access of Greenford Broadway this family home is likely to be in huge demand. Further benefits include off street parking and a low maintenance rear garden with large brick built storage to the rear.

Please call the office today to arrange a viewing and avoid disappointment by missing out.

£1,700

Approximate gross internal floor area 71 Sq M 753 Sq Ft



Whilst every attempt has been made to ensure the accuracy of the floor plan contained here, measurements are approximate and no responsibility is taken for any error, omission, or mis-statement. The plan is for illustrative purposes only and should be used as such by any prospective purchaser.

Energy Efficiency Rating		Current	Potential
Very energy efficient - lower running costs			
(92 plus) A			81
(81-91) B			
(69-80) C			
(55-68) D		60	
(39-54) E			
(21-38) F			
(1-20) G			
Not energy efficient - higher running costs			
England & Wales		EU Directive 2002/91/EC	

Environmental Impact (CO ₂) Rating		Current	Potential
Very environmentally friendly - lower CO ₂ emissions			
(92 plus) A			
(81-91) B			
(69-80) C			
(55-68) D			
(39-54) E			
(21-38) F			
(1-20) G			
Not environmentally friendly - higher CO ₂ emissions			
England & Wales		EU Directive 2002/91/EC	