

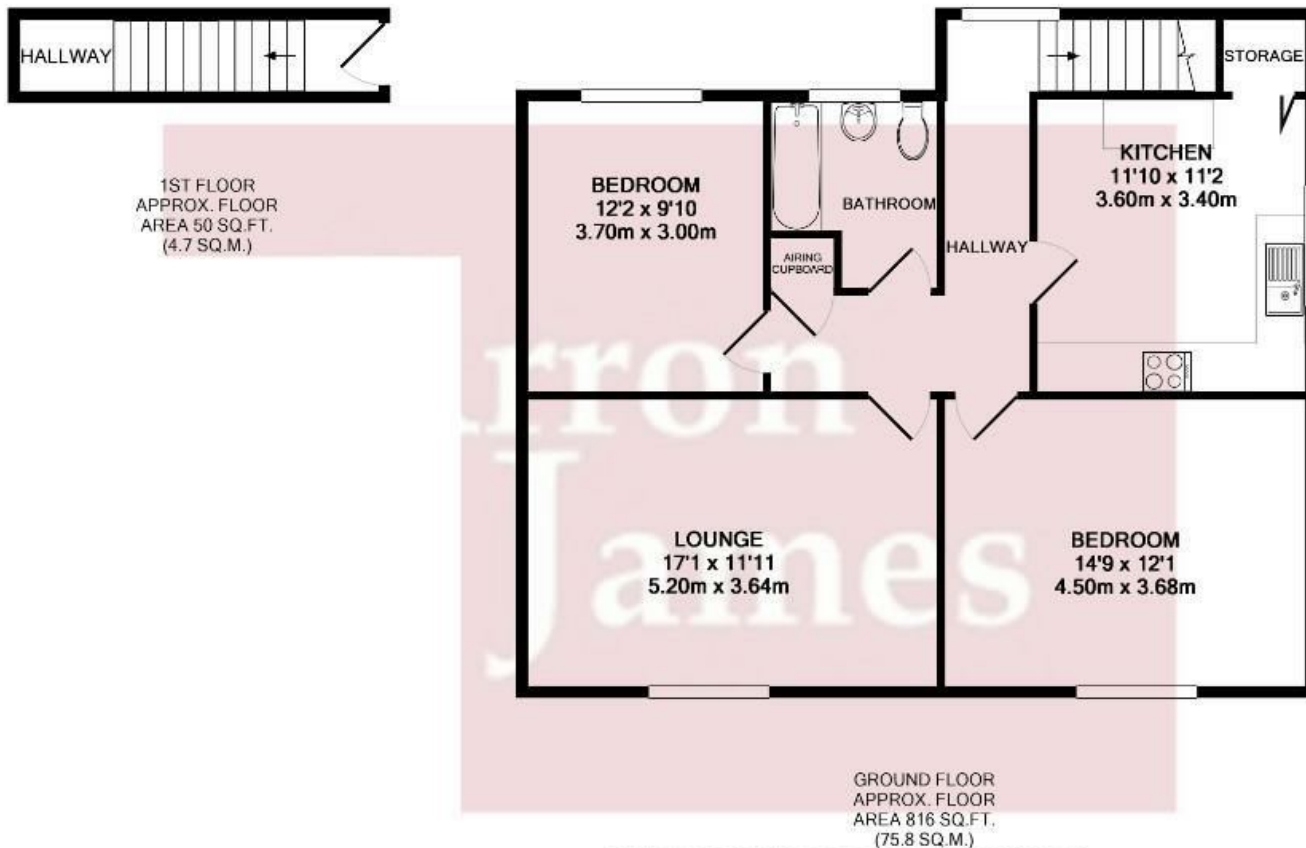


94 Albert Street, Slough, Berkshire, SL1 2AY

New to the market is this larger than average two bedroom, first floor maisonette. This property boasts a private garden, garage and off street parking. In this flat there are two double bedrooms, large front room and fully fitted kitchen and bathroom.

Slough town centre is a short walk away with an array of shops, bars and restaurants. Slough Main Line station is within a mile away.

£1,175 Per Month



Whilst every attempt has been made to ensure the accuracy of the floor plan contained here, measurements of doors, windows, rooms and any other items are approximate and no responsibility is taken for any error, omission, or mis-statement. This plan is for illustrative purposes only and should be used as such by any prospective purchaser. The services, systems and appliances shown have not been tested and no guarantee as to their operability or efficiency can be given.
Made with Metropix ©2018

Energy Efficiency Rating	
	Potential
Very energy efficient - lower running costs	
(92 plus) A	
(81-91) B	
(69-80) C	
(55-68) D	
(39-54) E	
(21-38) F	
(1-20) G	
Not energy efficient - higher running costs	
41	77
England & Wales EU Directive 2002/91/EC	

Environmental Impact (CO ₂) Rating	
	Potential
Very environmentally friendly - lower CO ₂ emissions	
(92 plus) A	
(81-91) B	
(69-80) C	
(55-68) D	
(39-54) E	
(21-38) F	
(1-20) G	
Not environmentally friendly - higher CO ₂ emissions	
41	77
England & Wales EU Directive 2002/91/EC	