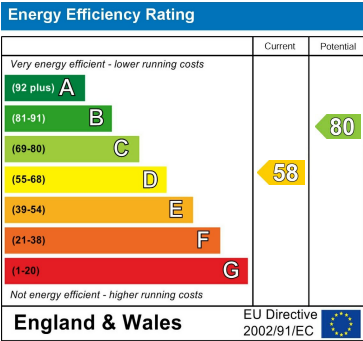
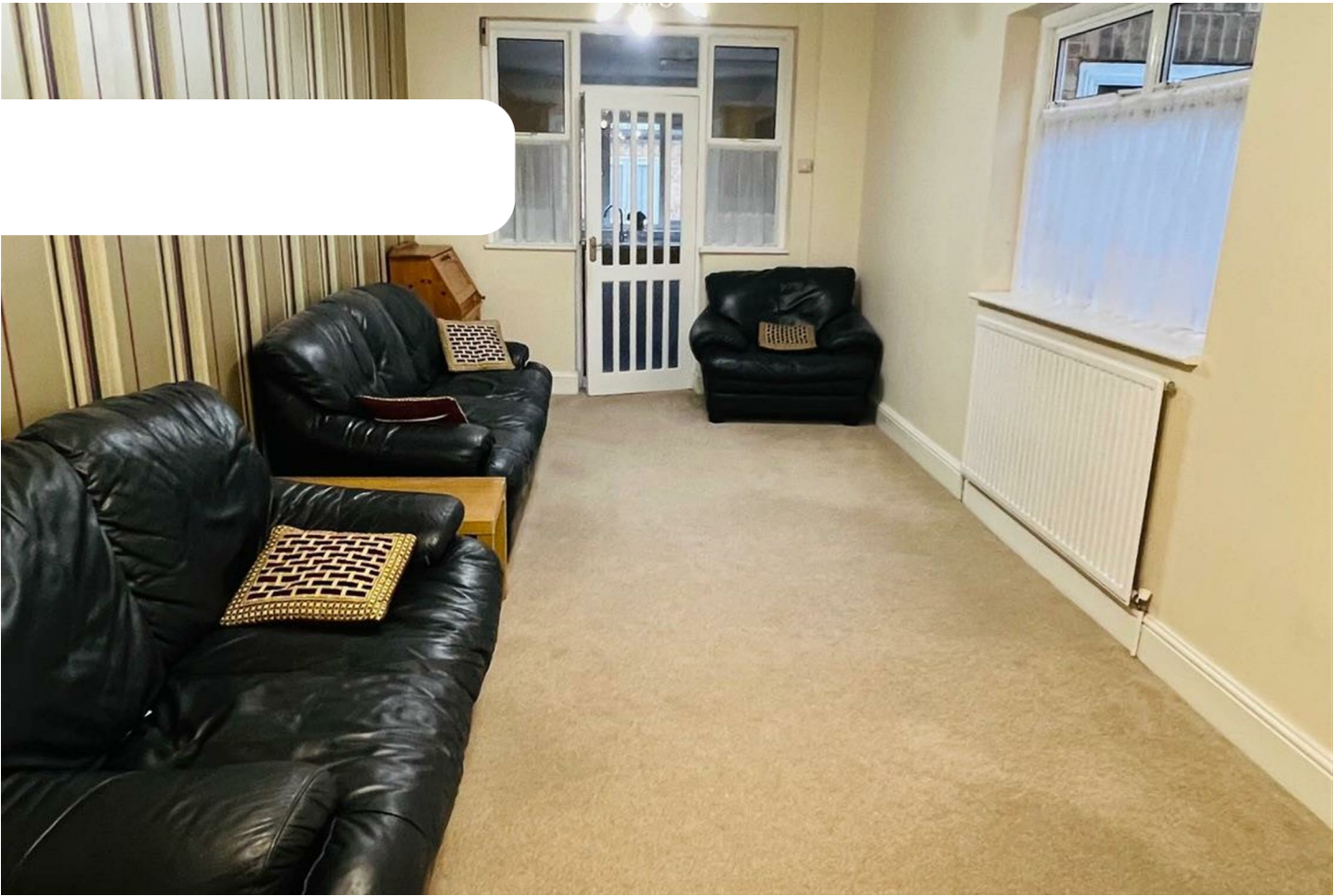


Council Tax Band  
C  
Energy Performance Graph



Call us on  
**02081 501577**  
**Sales@citymize.com**  
**citymize.com**

Agents Note: Whilst every care has been taken to prepare these particulars, they are for guidance purposes only. All measurements are approximate and are for general guidance purposes only and whilst every care has been taken to ensure their accuracy, they should not be relied upon and potential buyers are advised to seek their own measurements.



HOUSE - TERRACED (EPC RATING: D)  
**61 GLADSTONE AVENUE, LONDON, E12**  
**6NR**  
**PER MONTH**  
**£4,000 PER MONTH**





# 6 Bedroom House - Terraced located

Welcome to Gladstone Avenue, London - a property that epitomizes elegance and comfort! This terraced house boasts six bedrooms, two bathrooms, and a spacious reception room perfect for entertaining guests or relaxing with family.

Step inside to discover a large lounge with dining area, ideal for hosting dinner parties or enjoying cozy nights in. The property has been newly refurbished, offering a fresh and modern feel throughout.

With its prime location in London, this part-furnished house provides the perfect canvas for you to make it your own. Don't miss out on the opportunity to call this stunning property your new home!

## Lounge

29'6"

Large lounge with dining, access to kitchen and downstairs bathroom

The heart of your home is a sprawling lounge that seamlessly integrates a dining area. Perfect for entertaining, this open plan space allows conversation to flow freely as you prepare meals in the nearby kitchen, accessible through a convenient doorway. A downstairs bathroom is also close at hand, completing the convenient downstairs living experience.

## kitchen

22'11"

fully fitted kitchen with all appliance with access to the downstairs bathroom and it has access to the garden

The hub of the home is a fully fitted kitchen, equipped with all modern appliances for culinary creativity. French doors provide easy access to the garden, perfect for summertime barbeques or bringing the outdoors in. Conveniently located next to the kitchen is a downstairs bathroom, making entertaining and everyday life a breeze.

## Master bedroom 1

13'1"

fitted wardrobe, master size bed

The tranquil master bedroom boasts a fitted wardrobe, offering ample storage for your entire wardrobe. This ensures a clutter-free haven, maximizing the feeling of space. A king-size bed takes center stage, inviting restful nights and lazy mornings.

## King size room 2

13'1"

fitted wardrobe, it has a large window, king size bed

The master bedroom features a king-size bed and a fitted wardrobe. This provides ample storage and sleeping space for a comfortable and organized retreat

## Bedroom 3

11'5"

large double size room with plenty of storage

The large double room boasts a fitted wardrobe, providing ample storage for all your belongings. This ensures a clutter-free space for you to relax and unwind.

## Bedroom 4

11'5"

double size room

## Bedroom 5

12'1"

first floor bedroom next to bathroom



## Bedroom 6

14'9"

second-floor large bedroom, with plenty of storage options. can be used as a storage or home office

This spacious second-floor bedroom offers the ultimate flexibility. Packed with built-in storage solutions, like shelving, drawers, or even a walk-in closet, it can easily transform into a haven for organization. Whether you need a dedicated home office or simply a place to keep clutter at bay, this versatile room has you covered.

## Bathroom 1

6'6"

3 piece unit

## Bathroom 2

6'6"

3 piece unit

