

Lugus
HOMES

Apartment 22, 9 Millbank, London, SW1P 3AN

£9,533 Per month





£9,533 Per month

Apartment 22, 9 Millbank

London, SW1P 3AN

- Spacious 1,830 sq ft 3 bed, 3 bath in prime Westminster
- Premium Küppersbusch kitchen appliances
- Two bedrooms with en-suite, underfloor heating
- 10-min walk to Westminster Station
- Fully furnished
- Double-width open-plan reception and kitchen
- Engineered timber floors and bespoke joinery
- On-site concierge, pools, sauna, gym, cinema
- Close proximity to Pimlico, St James's Park, Covent Garden
- Ready to move into

Located on one of Westminster's most prestigious addresses, this exceptional three-bedroom, three-bathroom apartment is set on the fifth floor of Millbank Residences—a beautifully restored 1920s building that blends classical architecture with refined contemporary living.

Offering approximately 1,830 sq ft of meticulously designed space, the apartment features engineered timber flooring, bespoke joinery, and a soft neutral palette that enhances the sense of light and space throughout.

At the heart of the home is a stunning double-width reception and kitchen area, perfectly designed for modern living. This expansive open-plan space is ideal for both relaxed everyday life and entertaining friends and family. The kitchen is a statement in modern elegance, complete with Küppersbusch appliances, composite stone worktops, and sleek cabinetry.

Each of the three bedrooms includes built-in wardrobes, with two benefiting from their own en-suite bathrooms. All bathrooms are finished to a high standard with porcelain tiling, underfloor heating, and polished chrome fixtures.

Residents enjoy an exceptional suite of on-site amenities, including 24-hour concierge service, swimming and vitality pools, sauna and steam room, private gym and fitness studio, cinema room and treatment room, as well as private dining and meeting spaces. Secure parking is available by separate negotiation.

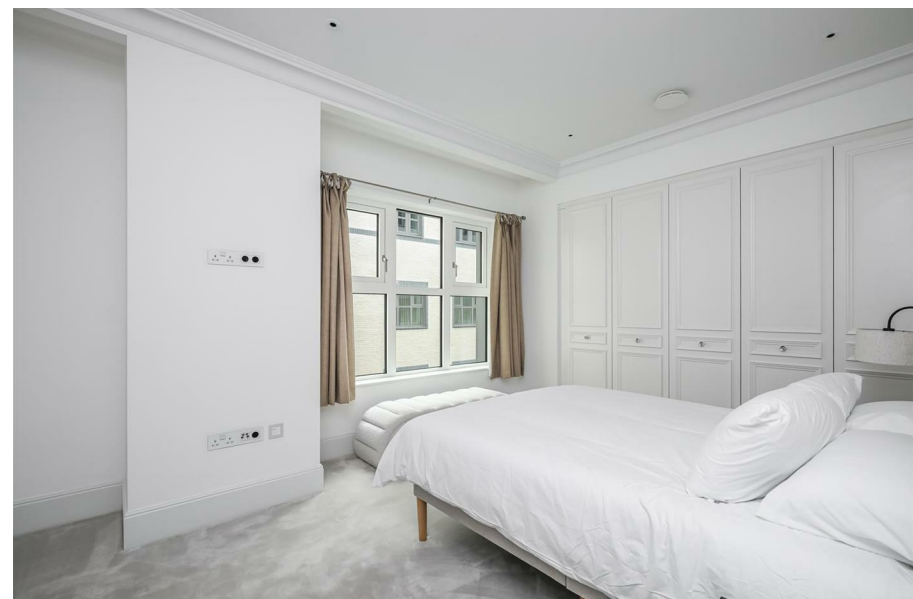
Perfectly positioned, Millbank Residences is just a 10-minute walk to Westminster Underground Station, offering fast access to Bond Street (4 mins), South Kensington (9 mins), and Heathrow Airport (56 mins). Pimlico and St James's Park stations are also close by, each one stop from Victoria Station, while Covent Garden and Soho are easily reached within 10–12 minutes by taxi.

The property is offered furnished.



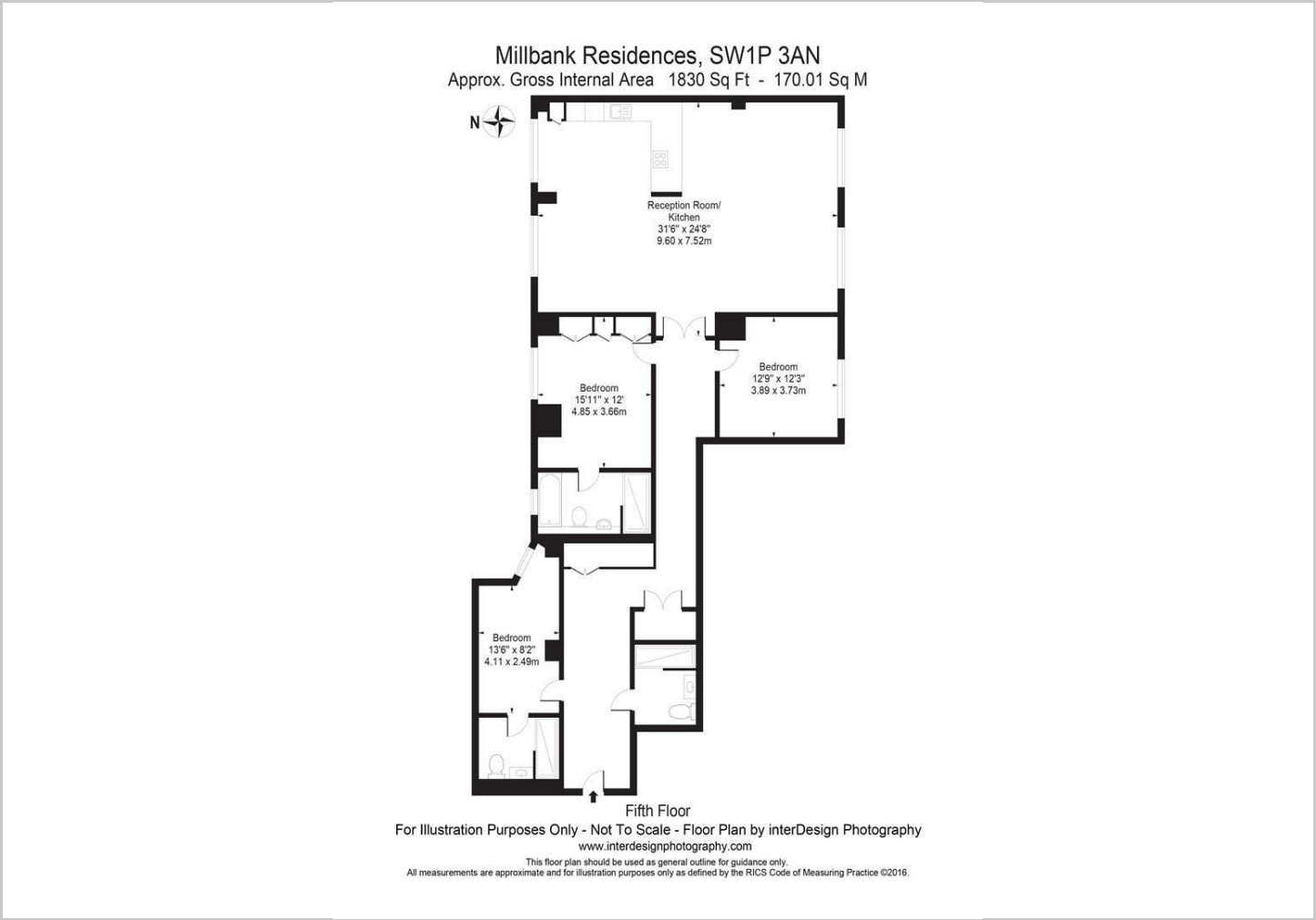


[Directions](#)





Floor Plans



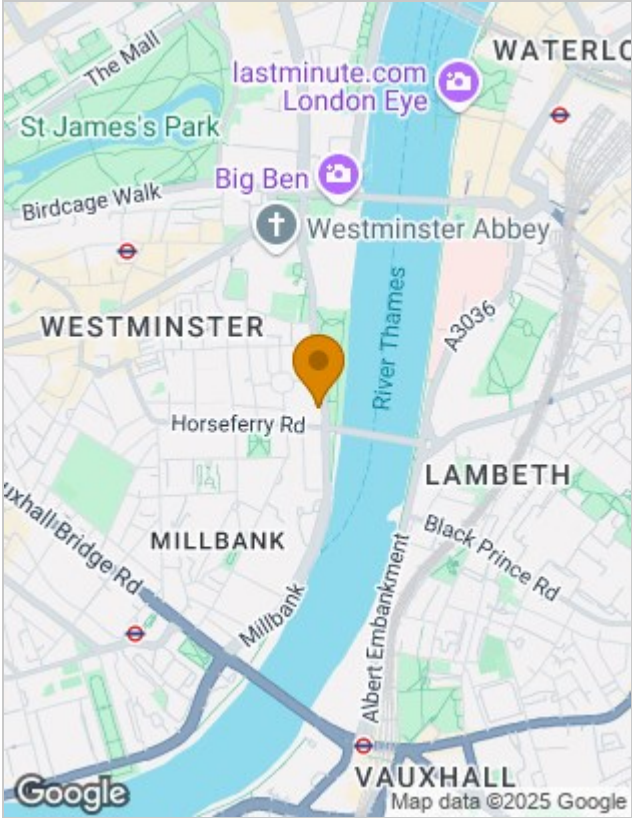
Viewing

Please contact our Lugus Homes Office on 07787 560885 if you wish to arrange a viewing appointment for this property or require further information.

The particulars are set out as a general outline only for the guidance of intended purchasers or lessees, and do not constitute, any part of a contract. Nothing in these particulars shall be deemed to be a statement that the property is in good structural condition or otherwise nor that any of the services, appliances, equipment or facilities are in good working order. Purchasers should satisfy themselves of this prior to purchasing.

24 Lower Downs Road, Raynes Park, London, SW20 8QG
Tel: 07787 560885 Email: info@lugushomes.co.uk lugushomes.co.uk

Location Map



Energy Performance Graph

