

West Ella Road, London, NW10 9PT

£484 Per Week



Churchill&Mathesons



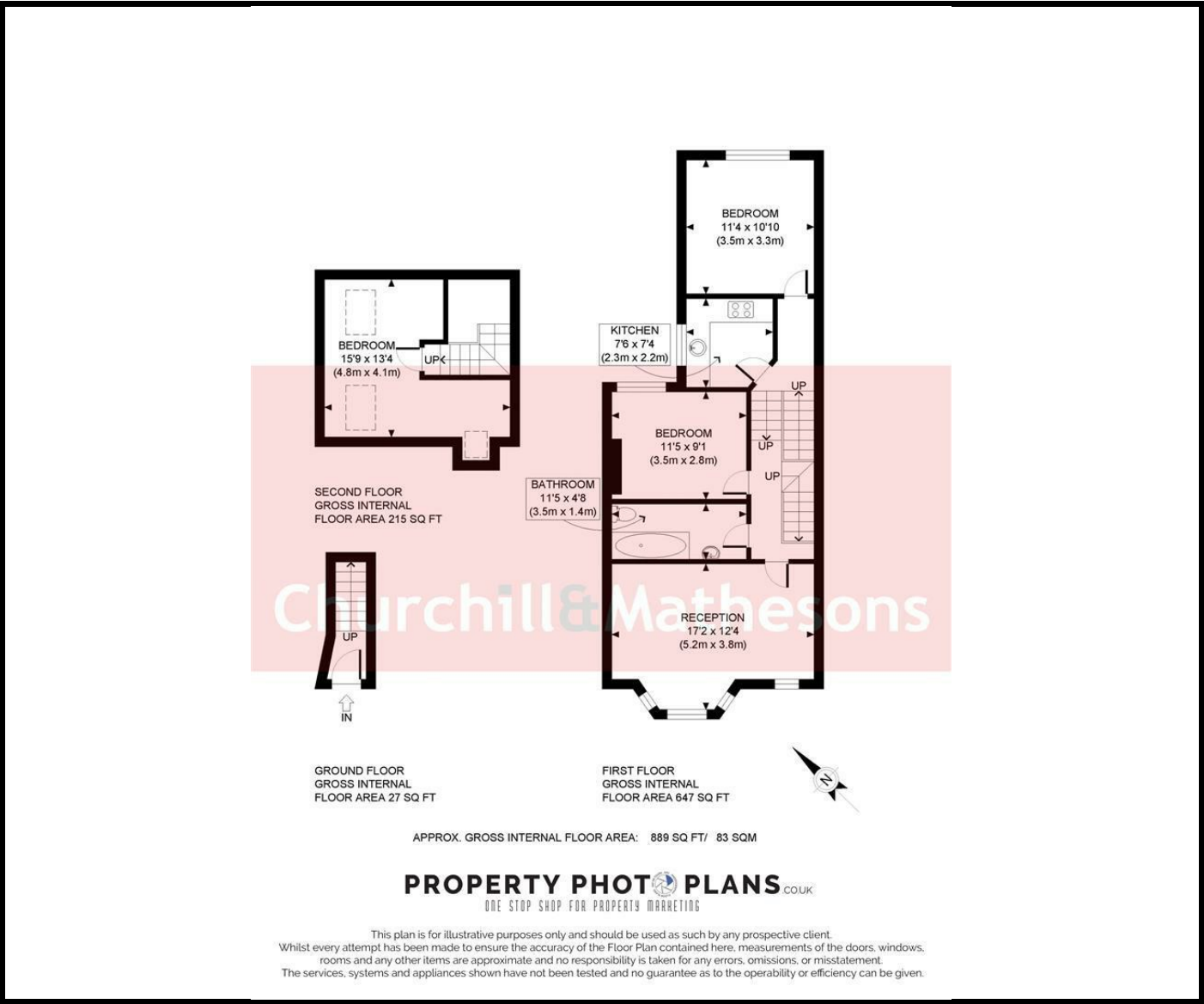
Churchill&Mathesons

**KEY FEATURES:**

- Spacious 3 bedroom first floor flat
- Bright and airy, separate reception
- Fitted kitchen with integrated appliances
- Offered in excellent condition throughout
- Close to all shops and amenities of Harlesden and Willesden
- FURNISHED/UNFURNISHED ~ AVAILABLE NOW

Spacious 3 bedroom first floor flat  
\* 3 Double bedrooms  
\* Bright and airy, separate reception  
\* Fitted kitchen with integrated appliances  
\* Fully tiled bathroom  
\* Offered in excellent condition throughout  
\* Located on a quiet residential road  
Close to all shops and amenities of Harlesden and Willesden  
FURNISHED/UNFURNISHED ~ AVAILABLE NOW





Energy Efficiency Rating		
	Current	Potential
Very energy efficient - lower running costs		
(92 plus) A		
(81-91) B		
(69-80) C		
(55-68) D		
(39-54) E		
(21-38) F		
(1-20) G		
Not energy efficient - higher running costs		
England & Wales	EU Directive 2002/91/EC	

Environmental Impact (CO <sub>2</sub> ) Rating		
	Current	Potential
Very environmentally friendly - lower CO <sub>2</sub> emissions		
(92 plus) A		
(81-91) B		
(69-80) C		
(55-68) D		
(39-54) E		
(21-38) F		
(1-20) G		
Not environmentally friendly - higher CO <sub>2</sub> emissions		
England & Wales	EU Directive 2002/91/EC	

Whilst every effort is made to give a fair description, the accuracy of these particulars is not guaranteed, neither do they constitute an offer or contract.

**CHURCHILL & MATHESONS ESTATE AGENTS** have not tested any apparatus, equipment, fitting or services and so cannot verify that they are in working order. The buyer is advised to obtain verification from their solicitor or surveyor. Measurements are correct to within +/-6 A sonic tape is used. None of the statements contained in these particulars or any of our properties are to be relied upon as a representation of fact.