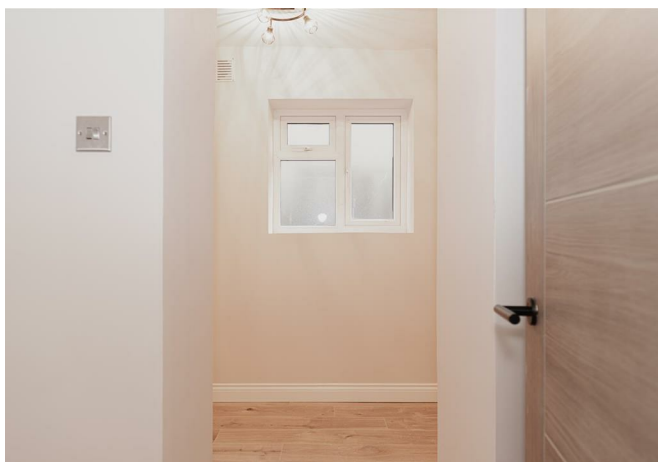




Station Road, Redhill

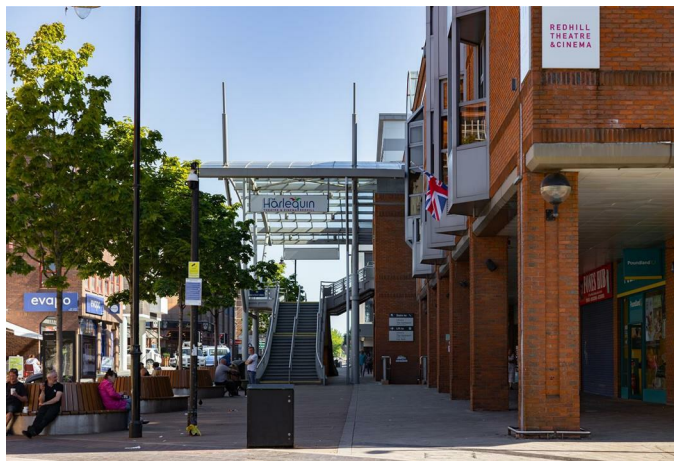
£1,500 Per Month





This newly refurbished two-bedroom ground-floor flat in Redhill offers a stylish blend of period charm and modern finishes. With a private entrance, spacious rooms, ample storage, and natural light throughout, it's available unfurnished and ready for immediate occupancy come the end of November / beginning December





Ralph James is delighted to present this stylish, two-bedroom flat available to rent in Redhill.

Currently at the end stages of a full refurbishment, this ground-floor flat offers a unique blend of period charm and contemporary design. Featuring its own private entrance, it has a welcoming, maisonette-like feel that's sure to appeal.

Upon entry, you're greeted by a bright, spacious hallway with built-in storage along the way. To the right, the newly fitted kitchen boasts modern white goods, durable countertops, and windows on each side, flooding the room with natural light.

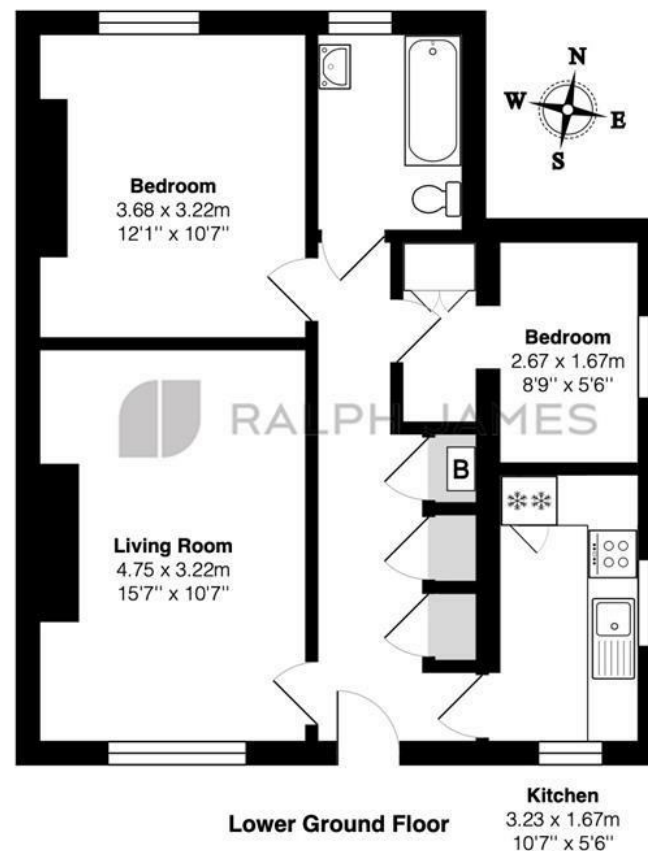
On the opposite side, the living room provides a generously sized area with ample wall space, ideal for all your furniture needs.

At the end of the hallway are two bedrooms: a spacious double and a slightly smaller room with its own walk-in closet, making it perfect for a dressing area or even a home office. Completing the layout is a chic bathroom, featuring elegant marble-style tiles, a bath/shower, and a window.

This flat is available unfurnished and is ready for immediate occupancy. With its modern, fresh design, it won't stay on the market for long. Secure your viewing quickly!

Need to know

- Stylish, refurbished two-bedroom ground-floor flat with period charm and modern design
- Private entrance providing a desirable maisonette-like feel
- Bright, spacious hallway with ample built-in storage
- Modern kitchen with brand-new white goods, durable countertops, and plenty of natural light from windows on each wall
- Generously sized living room with ample wall space, perfect for versatile furniture layouts
- Two bedrooms: one large double and a slightly smaller room with a walk-in closet, ideal as a dressing area or home office
- Contemporary bathroom featuring marble-style tiles, bath/shower combo, and a window
- Available unfurnished
- EPC: D
- Council Tax: B



Lower Ground Floor

Station Road, Redhill

Total Area: 57.0 m² ... 614 ft²

FOR ILLUSTRATIVE PURPOSES ONLY.

Whilst every attempt has been made to ensure the accuracy of the floor plan shown, all measurements, positioning, fixtures, features, fittings and any other data shown are an approximate interpretation for illustrative purposes only and are not to scale.

No responsibility is taken for any error, omission, miss-statement or use of data shown.

The above statement applies to both 'Still Moving London LTD' and the Company or individual displaying this floor plan.

Unauthorised reproduction prohibited.

© Still Moving London LTD (www.stillmoving.london)

 RALPH JAMES

Interested?

redhill@ralphjames.co.uk
01737 765 555

1

ralphjames.co.uk