



Beech Lawns, London, N12 9PP

£1,700 PCM

 2  1  1






Adam Hayes - North Finchley Office - Lettings 365 Ballards Lane, North Finchley, London, N12 8LL

Tel: 020 8445 4008 Email: [info@adam-hayes.co.uk](mailto:info@adam-hayes.co.uk) Web: [www.adam-hayes.co.uk](http://www.adam-hayes.co.uk)

Beech Lawns, London, N12 9PP

£1,700 PCM

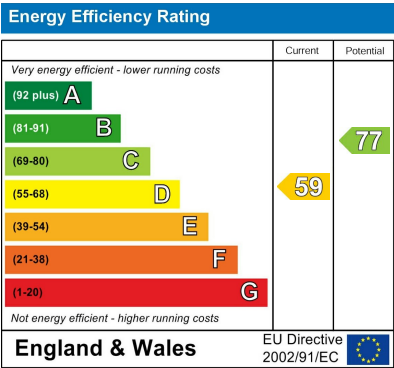
 2 Bedrooms  1 Bathrooms  1 Receptions

Key Features

- Two Double Bedroom Flat
- Purpose Built Block
- Great Location
- Approx. 13ft Reception
- Newly Refurbished
- Modern Kitchen and Bathroom
- Allocated Parking

Other Information

Council Tax Band: C  
Length of Tenancy: Long Let  
Deposit: £1,961

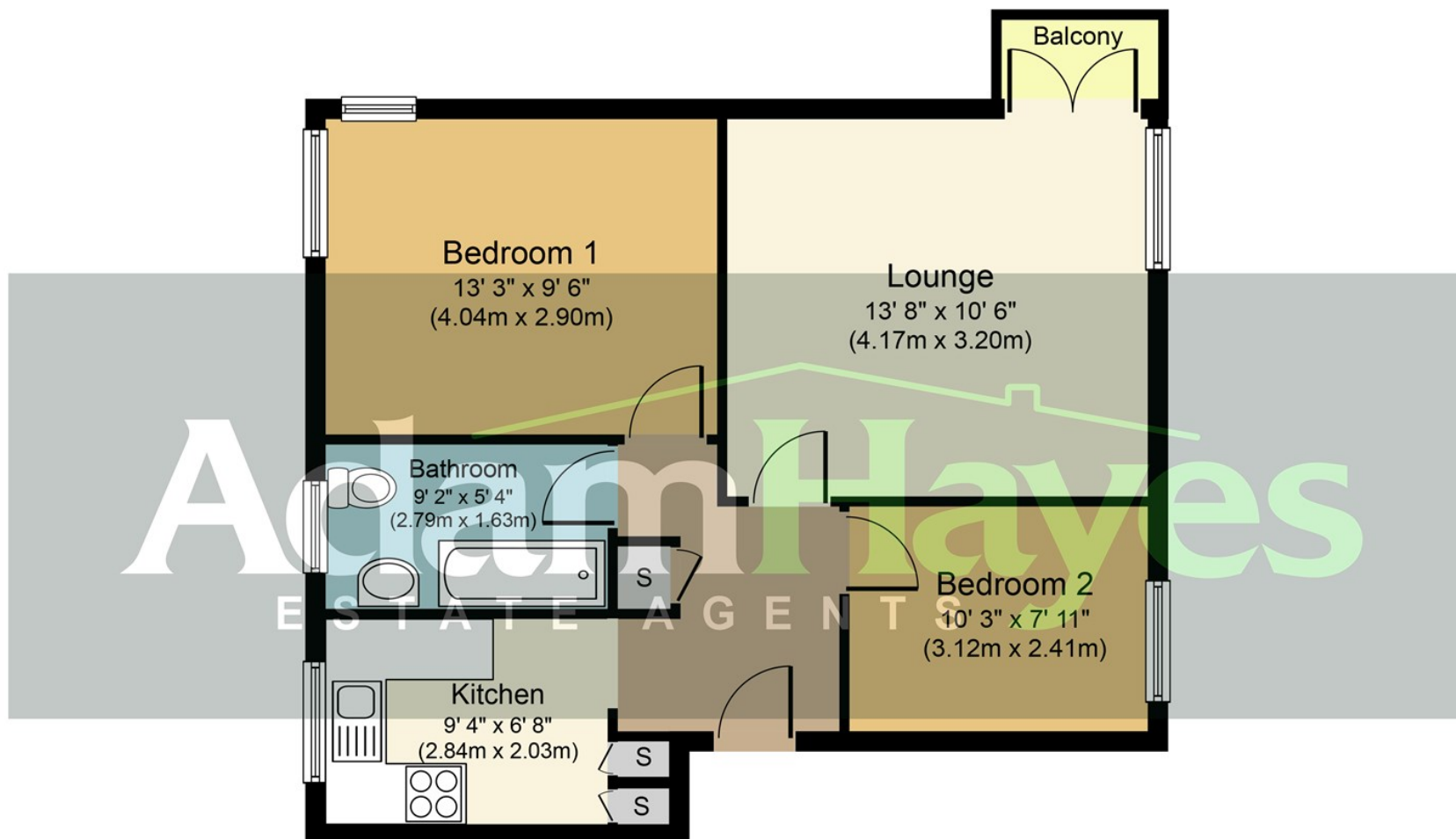


Nearest Stations

- Woodside Park Station 0.6 miles
- West Finchley Station 0.9 miles
- Totteridge & Whetstone Station 1.1 miles

Property Description

A beautifully refurbished top-floor, two-bedroom apartment situated just off Torrington Park, offering convenient access to Woodside Park Tube Station and the lively North Finchley High Road. This elegant property boasts a newly fitted modern kitchen, a stylish brand-new bathroom, a spacious 13ft reception room, double glazing, and gas central heating. Additional highlights include a charming balcony and allocated gated parking for one car. Residents will enjoy proximity to an array of local cafes, restaurants, and shopping amenities located closeby. Early viewings are highly recommended via the landlord's sole agent Adam Hayes.



**Approx. Gross Internal Floor Area 565 sq. ft. / 52.5 sq. m.**

Whilst every attempt has been made to ensure the accuracy of the floor plan contained here, measurements of doors, windows, rooms and any other items are approximate and no responsibility is taken for any error, omission, or mis-statement. This plan is for illustrative purposes only and should be used as such by any prospective purchaser or tenant. The services, systems and appliances shown have not been tested and no guarantee as to their operability or efficiency can be given.

Copyright V360 Ltd 2017 | [www.houseviz.com](http://www.houseviz.com)

These particulars, whilst believed to be accurate, are set out as a general outline only for guidance and do not constitute any part of an offer or contract. Intending purchasers or prospective tenants should not rely on them as statements or representation of fact, but must satisfy themselves by inspection or otherwise as to their accuracy. We have not carried out a detailed survey, not tested the services, appliances and specific fittings. Room sizes should not be relied upon for carpets and furnishings. The measurements given are approximate. No person in this firm's employment has the authority to make or give any representation or warranty in respect of the property.