



18 Rampayne Street, SW1V | £2,950 Per Month



**TUCKERMAN**  
ESTATE AGENTS  
PROPERTY PROFESSIONALS



# Rampayne Street, London

Spread over two levels, it features a spacious open-plan kitchen, dining, and living area with elegant wood flooring throughout, creating the perfect space for entertaining or relaxing. Two well-proportioned bedrooms, a sleek bathroom, a separate shower room, and an additional WC provide both comfort and practicality.

Additional highlights include communal heating and hot water, ample built-in storage, independent access, and a private secluded garden—ideal for outdoor dining or unwinding in a tranquil setting.

Situated just minutes from Pimlico Tube Station, the property benefits from excellent transport links and is surrounded by a fantastic selection of local shops, cafés, and restaurants. This superb flat combines convenience, contemporary style, and outdoor space, making it a standout choice for modern living.









# Rampayne Street, London

**Per Month:**  
£2,950 Per Month subject to contract.

**Tenure:**

**Local Authority:**  
Westminster City

**Council Tax Band:**  
D

**Approximate Gross Internal Area:**  
784.00 sq ft

Energy Efficiency Rating

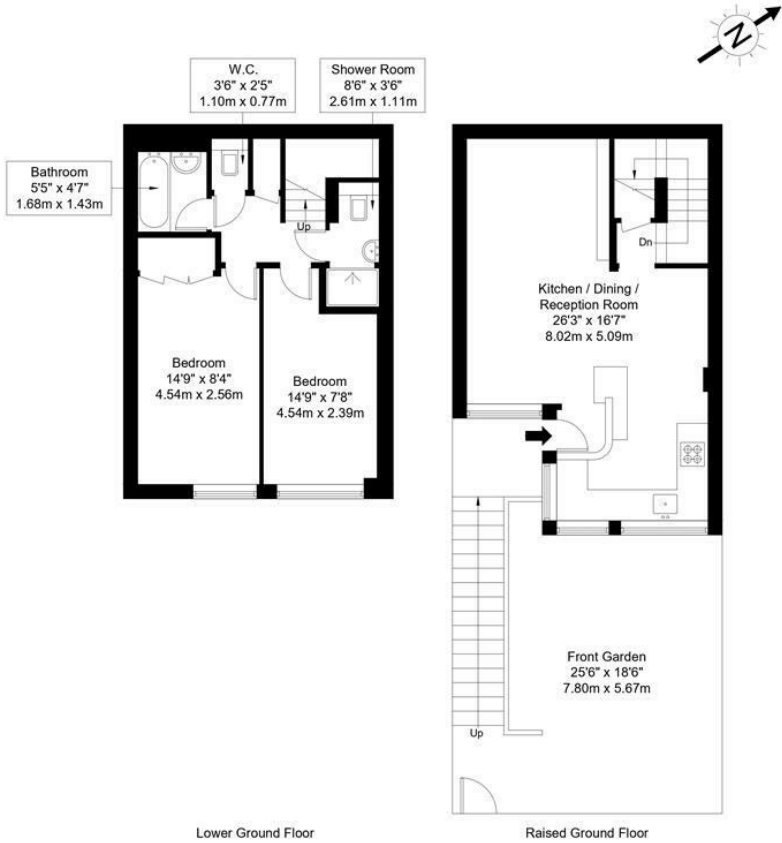
	Current	Potential
Very energy efficient - lower running costs		
(92 plus) <b>A</b>		
(81-91) <b>B</b>		
(69-80) <b>C</b>		
(55-68) <b>D</b>	54	63
(39-54) <b>E</b>		
(21-38) <b>F</b>		
(1-20) <b>G</b>		
Not energy efficient - higher running costs		

England & Wales

EU Directive  
2002/91/EC

# Rampayne Street, SW1V 2TG

Approx Gross Internal Area = 72.84 sq m / 784 sq ft



Ref :

Copyright **BLEU PLAN**

The Floor plan is not to scale and measurements and areas shown are approximate and therefore should be used for illustrative purposes only. The plan has been prepared in accordance with the RICS code of Measuring Practice and whilst we have confidence in the information produced it must not be relied on. Maximum lengths and widths are represented on the floor plan. If there is any aspect of particular importance, you should carry out or commission your own inspection of the property.  
Copyright @ BLEUPLAN

TUCKERMAN

ESTATE AGENTS

PROPERTY PROFESSIONALS

Agents Note: Whilst every care has been taken to prepare these sales particulars, they are for guidance purposes only. All measurements are approximate are for general guidance purposes only and whilst every care has been taken to ensure their accuracy, they should not be relied upon and potential buyers are advised to recheck the measurements