



39, Hill Street,
, W1J

£798 Per Week,

NAPIER WATT

T: 0207 935 0011
E: enquiries@napierwatt.co.uk
W: napierwatt.co.uk

35 Berkeley Square, Mayfair, London, W1J 5BF







Description

A one bedroom apartment located on the top floor of this red brick building. Situated in the heart of London's fashionable Mayfair, the apartment walking distance to both Hyde Park and Green Park. The apartment is set over 423sq ft and comprises a recently refurbished, large reception room, a modern bedroom, bathroom and kitchenette. Hill Street benefits from spacious living accommodation, lift service, and an on-site building manager.

Available, furnished.

1 Bedroom : 1 Bathroom : Porter : Lift : EPC Rating D : Westminster Council Tax Band E

Key Features

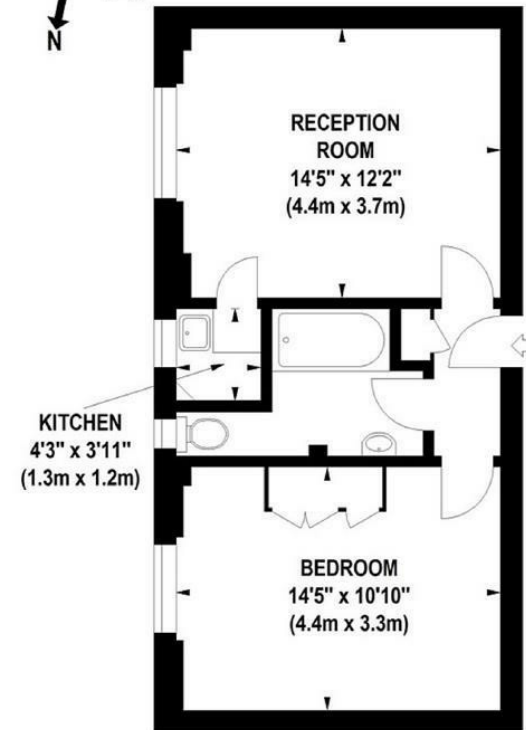
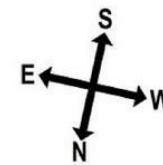
- ACCESS TO A PRIVATE GATED COMMUNAL GARDEN
- AVAILABLE FURNISHED OR UNFURNISHED
- CENTRAL MAYFAIR LOCATION
- FLEXIBLE RENTAL TERMS
- PET FRIENDLY
- SUPERFAST BROADBAND
- 24-HOUR EMERGENCY HELPLINE SERVICE

Terms

Fees & Charges: Tenancies exceeding £100,000 Per annum £480 inc VAT, Tenancies where a company is a tenant £480 Inc VAT.

Hill Street, W1

Approximate gross internal area
41 sq m / 441 sq ft



Eighth Floor

IMPORTANT: We would inform prospective purchasers that these sales particulars have been prepared as a general guide only. A detailed survey has not been carried out, nor the services, appliances and fittings tested. Room sizes should not be relied upon for furnishing purposes and are approximate. If floor plans are included, they are for guidance only and illustration purposes only and may not be to scale. If there are any important matters likely to affect your decision to buy, please contact us before viewing the property.