

# HOLIMPIA



38 Commercial Street, London, E1 6LP

£2,200 Per month



1



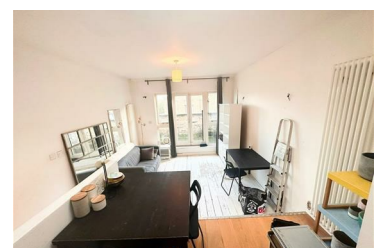
1



1



We are thrilled to announce that starting from this Saturday, our stunning split-level one-bedroom apartment will be available for rent. Located just a few steps away from Algate East station, this cozy and beautiful flat is perfect for those seeking convenience and comfort. As soon as you enter, you will be greeted by a well-sized kitchen and an open-plan living room seamlessly flowing into a private balcony. The abundance of natural light streaming in creates a warm and inviting atmosphere. The entire flat features beautiful white flooring, adding an elegant touch to the space. The bedroom, in particular, is exceptionally comfortable, cozy, and quiet, ensuring a peaceful night's sleep. The flat is offered fully furnished, allowing for a stress-free move-in experience. In just a week's time, you can enjoy your new home. Please note that while the flat is undergoing renovations, you will be greeted with a pristine, brand-new appearance upon move-in. Don't miss out on this opportunity to reside in a refreshed and revitalized living space. Contact us now to arrange a viewing and secure this incredible apartment for yourself.



Studio 7, 143 Mare St., Hackney, London, E8 3RH

Tel: 020 3633 8892 Email: [info@holimpia.co.uk](mailto:info@holimpia.co.uk) [www.altosoftware.co.uk](http://www.altosoftware.co.uk)