



Oakhampton Close, North Finchley, N12

£1,695 PCM

 2 Bedrooms  1 Bathroom  1 Reception



Adam Hayes - North Finchley Office - Lettings 365 Ballards Lane, North Finchley, London, N12 8LL

Tel: 020 8445 4008 Email: info@adam-hayes.co.uk Web: www.adam-hayes.co.uk

Oakhampton Close, North Finchley, N12

£1,695 PCM

2 Bedrooms 1 Bathrooms 1 Receptions

Key Features

- First Floor Flat
- Good Size Reception
- Communal Off Street Parking
- Newly Decorated
- Great Location
- Modern Fitted Kitchen

Nearest Stations

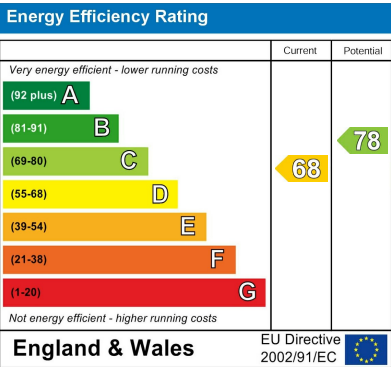
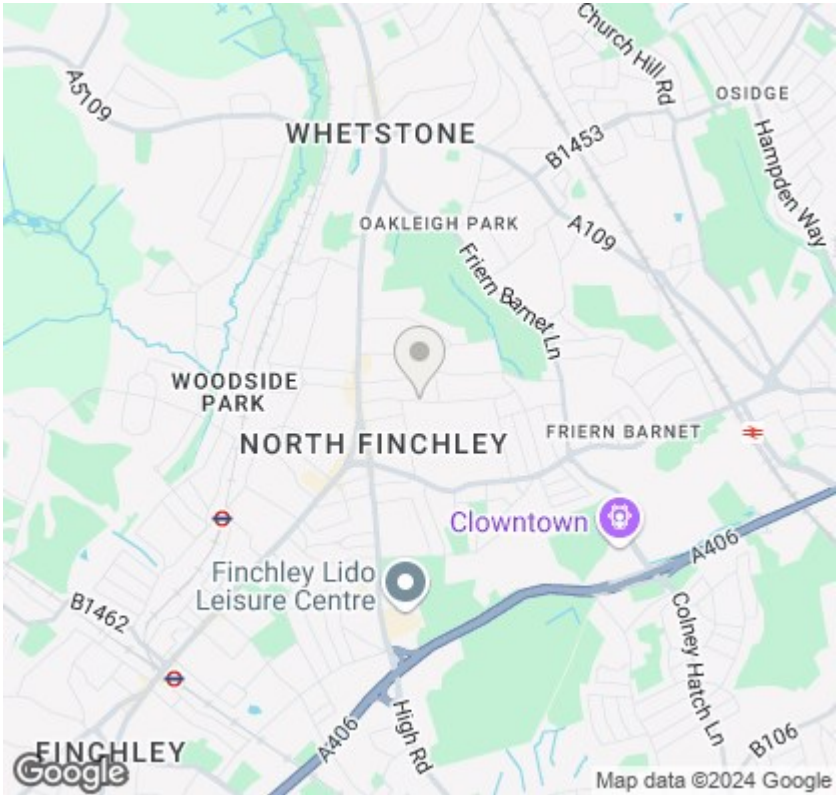
Woodside Park Station	0.6 miles
West Finchley Station	0.9 miles
Totteridge & Whetstone Station	1.0 miles

Property Description

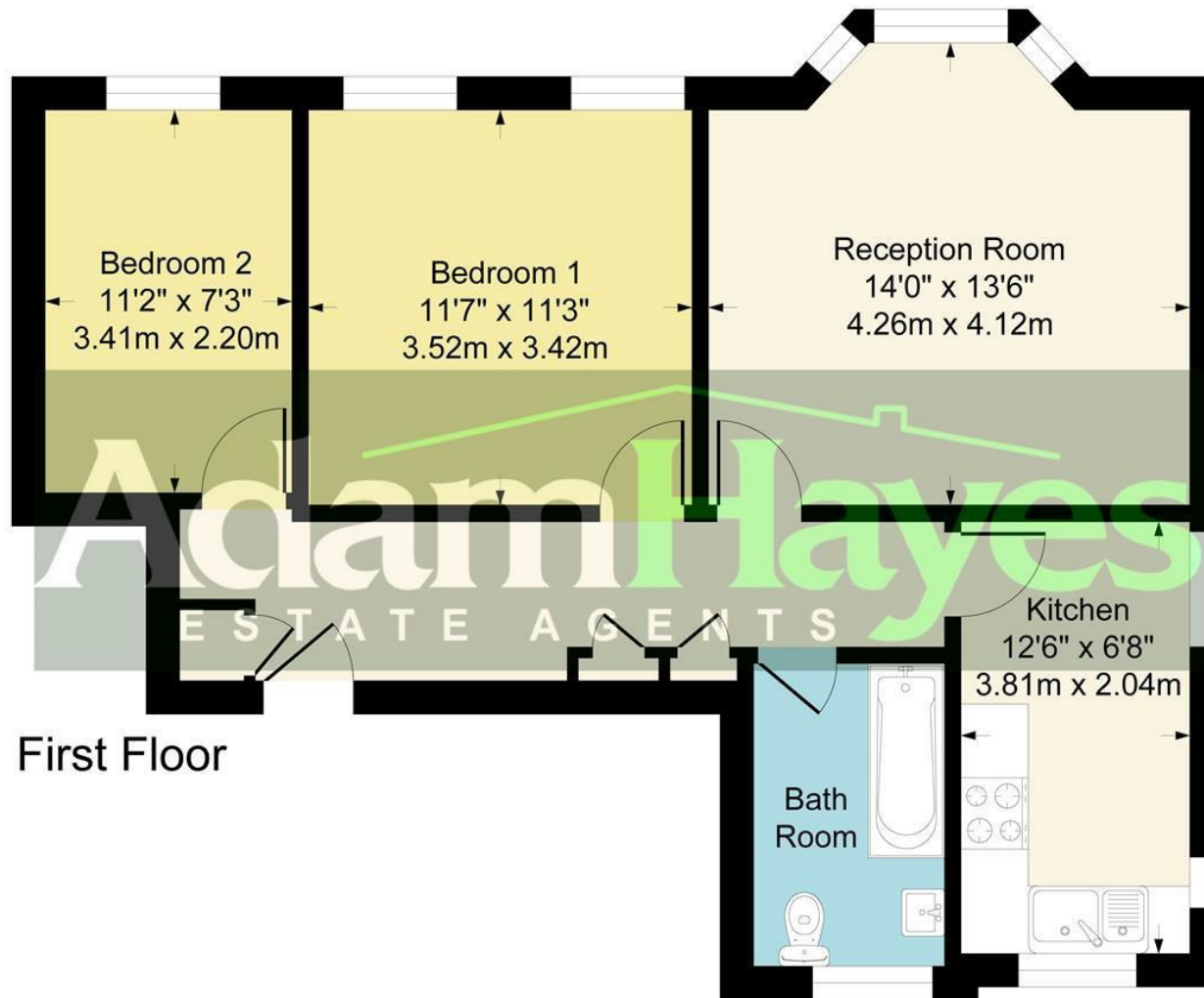
A newly decorated two bedroom first floor purpose built apartment situated in this popular development within easy access to North Finchley High Road and Woodside Park Tube Station. The property benefits from an approx. 14ft lounge, a modern fitted kitchen, double glazing and gas central heating. Okehampton Close is located via two private roads accessed from Friern Park and is close to multiple shopping facilities, cafés, restaurants and transport links. Early viewings are highly recommended!

Other Information

Council Tax Band: D
Length of Tenancy: Long Let
Deposit: £1,955



Approximate Gross Internal Area
649 sq ft - 60 sq m



First Floor

Although every attempt has been made to ensure accuracy, all measurements are approximate.
This floorplan is for illustrative purposes only and not to scale.
Measured in accordance with RICS Standards.

These particulars, whilst believed to be accurate, are set out as a general outline only for guidance and do not constitute any part of an offer or contract. Intending purchasers or prospective tenants should not rely on them as statements or representation of fact, but must satisfy themselves by inspection or otherwise as to their accuracy. We have not carried out a detailed survey, not tested the services, appliances and specific fittings. Room sizes should not be relied upon for carpets and furnishings. The measurements given are approximate. No person in this firm's employment has the authority to make or give any representation or warranty in respect of the property.