



Studio

**56-58, CROWNDALE  
ROAD, NW1 1TP**

Per Calendar  
**£1,975**

Available: 10th September 2025

### FEATURES

- Large Studio
- Top Floor
- Freestanding Shower
- Communal Gardens
- £100 per month for gas, electric and Water
- Separate Kitchen
- Moments from Camden Town and Kings Cross
- Separate WC



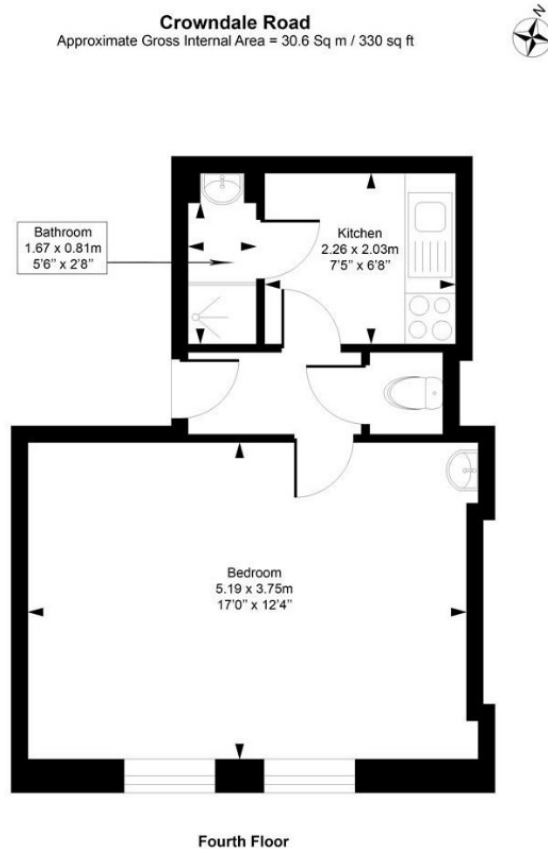
 0
  null
  1
  D

**Huddletons**

# 0 Bedroom Studio located in London

A bright and well-maintained studio flat located on Crowndale Road, NW1. This self-contained unit offers an open-plan living and sleeping area, a compact kitchenette, and a private en-suite bathroom. All bills are included (gas, electricity, water, and Wi-Fi), making it a hassle-free living option. Ideally situated just minutes from Camden Town and Mornington Crescent stations, with great access to local shops, cafes, and transport links. Perfect for a single professional or student.

£100 per month for gas, electric and Water.



Call us on

**0207 205 4411**

[info@huddletons.com](mailto:info@huddletons.com)

<http://www.huddletons.com>

**Council Tax Band**

**D**

Energy Efficiency Rating		
	Current	Potential
Very energy efficient - lower running costs		
(92 plus) <b>A</b>		
(81-91) <b>B</b>		
(69-80) <b>C</b>		
(55-68) <b>D</b>		
(39-54) <b>E</b>	56	59
(21-38) <b>F</b>		
(1-20) <b>G</b>		
Not energy efficient - higher running costs		
England & Wales		
EU Directive 2002/91/EC		

Agents Note: Whilst every care has been taken to prepare these particulars, they are for guidance purposes only. All measurements are approximate and are for general guidance purposes only and whilst every care has been taken to ensure their accuracy, they should not be relied upon and potential buyers are advised to recheck the measurements.

# Huddletons