



## Oakwood Court, London, W14 8JY

**£6,000 Per Month**



Nestled in the heart of Holland Park, this spacious 3-bedroom furnished apartment located on the 5th floor in a portered purpose-built block.

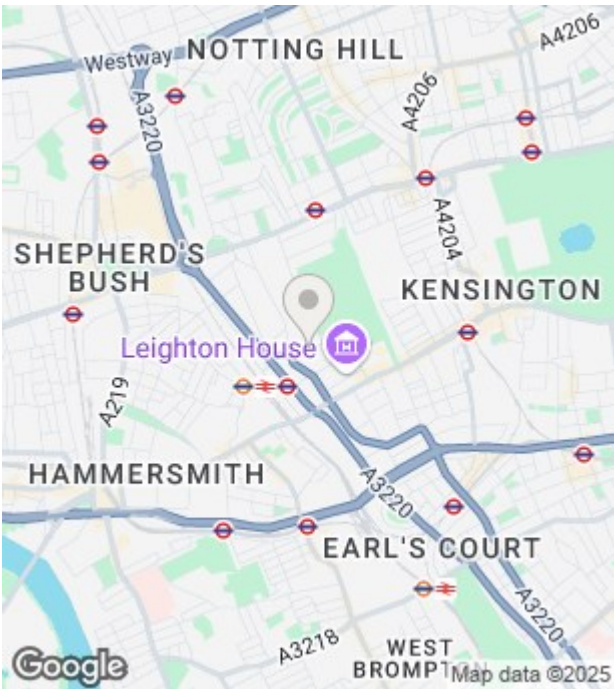
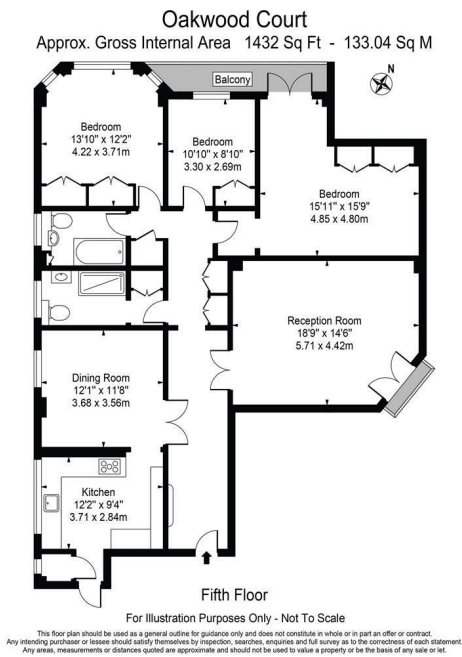
This spacious apartment comprises 3 double bedrooms with fitted wardrobes, 2 bathrooms (1 en-suite), a large reception room, separate dining room, fully equipped kitchen, and a private balcony.


The building benefits from a 24-hour porter/security, lift access and communal gardens.

The property is located moments from Holland Park, the amenities on Kensington High Street and Kensington Station (Overground and District Line).



- Portered Block
- Lift Access
- Separate Kitchen & Dining Room
- Wealth of Storage
- Communal Garden
- Private Balcony
- Fantastic local amenities
- Close to Holland Park and High Street Kensington Stations



Energy Efficiency Rating		
	Current	Potential
Very energy efficient - lower running costs		
(92 plus) <b>A</b>	<b>73</b>	
(81-91) <b>B</b>		
(69-80) <b>C</b>		
(55-68) <b>D</b>		
(39-54) <b>E</b>		
(21-38) <b>F</b>		
(1-20) <b>G</b>		
Not energy efficient - higher running costs		
England & Wales		EU Directive 2002/91/EC 

Environmental Impact (CO <sub>2</sub> ) Rating		
	Current	Potential
Very environmentally friendly - lower CO <sub>2</sub> emissions		
(92 plus) <b>A</b>		
(81-91) <b>B</b>		
(69-80) <b>C</b>		
(55-68) <b>D</b>		
(39-54) <b>E</b>		
(21-38) <b>F</b>		
(1-20) <b>G</b>		
Not environmentally friendly - higher CO <sub>2</sub> emissions		
<b>England &amp; Wales</b>		EU Directive 2002/91/EC

Unit 10 Paddington Works 8 Hermitage Street, London, W2 1BE  
 Tel: +44(O)20 3019 6151 Email: lettings@grange.london