

Heighths Waterside Way

, London, N17 9GL

£2,300



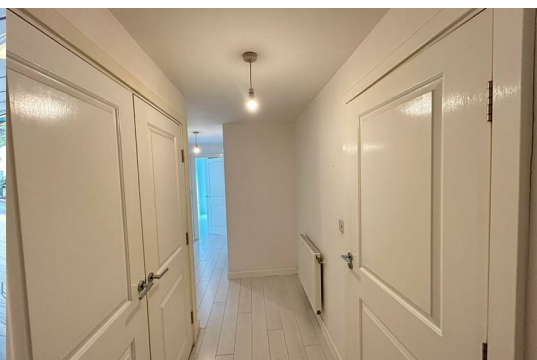
A bright and modern 2-bedroom, 2-bathroom apartment in the sought-after Kingfisher Heights within Hale Village, Tottenham.

This well-presented home features a spacious open-plan kitchen and living area with integrated appliances and access to a private balcony, ideal for relaxing or entertaining. Serving one double bedroom include a master with en-suite, plus a sleek main bathroom and a single bedroom in amazing condition.

The property is light-filled throughout with floor-to-ceiling windows, neutral décor, and quality finishes. Residents benefit from a secure entry system, lift access, and well-kept communal spaces.

Just a short walk to Tottenham Hale station (Victoria Line and National Rail), offering excellent links to Central London and Stansted Airport. Surrounded by local shops, cafés, and riverside walks.

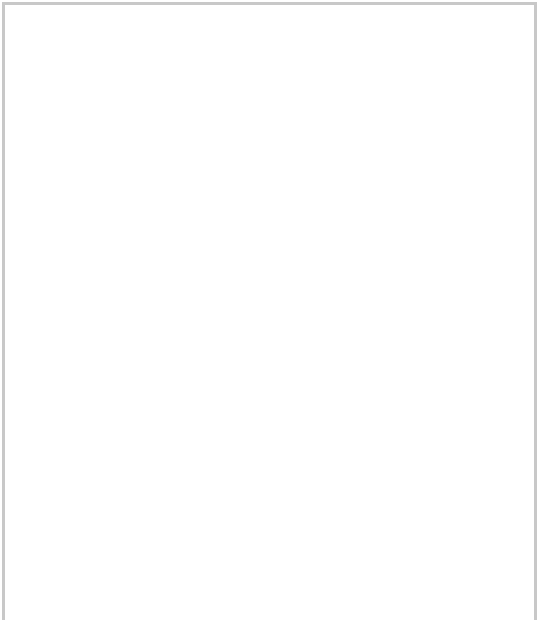
This apartment is perfect for professionals or sharers looking for style, convenience, and connectivity in North London.



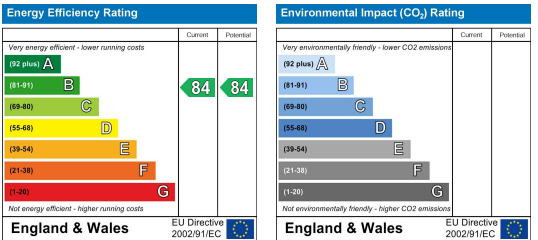
Area Map



Floor Plans



Energy Efficiency Graph



These particulars, whilst believed to be accurate are set out as a general outline only for guidance and do not constitute any part of an offer or contract. Intending purchasers should not rely on them as statements of representation of fact, but must satisfy themselves by inspection or otherwise as to their accuracy. No person in this firms employment has the authority to make or give any representation or warranty in respect of the property.